

# THE TEAM FOOTBALL



2024  
CATALOGUE  
UK / English

# MOVE TO ZERO

## Helping protect the future of sport for all athletes\*

Move to Zero is Nike's journey toward zero carbon and zero waste to help protect the future of sport. We exist to serve athletes everywhere and that's why we're on a mission to help ensure a healthy planet. For us, there is no finish line.

Niketeamfootball.com will now display a sunburst logo next to products made with sustainable materials. Look for this logo to find products made with at least 50% sustainable materials by weight, exclusive of trims.

Sustainable materials include recycled polyester or organic cotton. Recycled polyester reduces carbon emissions and waste. Organic cotton is grown without synthetic fertilizers and with less water than conventional cotton.

For more information on Nike Sustainability please visit [nike.com/sustainability](https://nike.com/sustainability) or [purpose.nike.com](https://purpose.nike.com).

# INDEX



MATCHDAY	4
GOALKEEPER	59
TRAINING	75
LIFESTYLE	181
REFEREE	209
EQUIPMENT	214

# MATCH DAY

JERSEYS	5
SHORTS	32
SOCKS	41
FIRST LAYERS	45
LITTLE KIDS SET	58



 Sustainable materials



## Carryover Dri-Fit Striped Division IV Jersey S/S

### Lifecycle

January 2021 - December 2024

### Available in

S - M - L - XL - 2XL



CW3813-060  
Anthracite /  
Black / (White)



CW3813-100  
White / Black /  
(Black)



CW3813-102  
White / Royal  
Blue / (Black)



CW3813-103  
White /  
University Blue /  
(Black)



CW3813-104  
White /  
University Red /  
(Black)



CW3813-302  
Pine Green /  
Black / (White)



CW3813-463  
Royal Blue /  
Black / (White)




CW3813-658  
University Red /  
Black / (White)



CW3813-719  
Tour Yellow /  
Black / (White)

### Product Features

- This product is made with 100% recycled polyester fibers
- Nike Dri-FIT technology moves sweat from your skin for quicker evaporation—helping you stay dry and comfortable
- Lightweight mesh on the back adds breathability
- Slim fit for a tailored feel

 Sustainable materials



Carryover

# Dri-Fit Striped Division IV Jersey S/S (Youth)

## Lifecycle

January 2021 - December 2024

## Available in

XS - S - M - L - XL



CW3819-060  
Anthracite /  
Black / (White)



CW3819-100  
White / Black /  
(Black)



CW3819-102  
White / Royal  
Blue / (Black)



CW3819-103  
White /  
University Blue /  
(Black)



CW3819-104  
White /  
University Red /  
(Black)



CW3819-302  
Pine Green /  
Black / (White)



CW3819-463  
Royal Blue /  
Black / (White)



CW3819-658  
University Red /  
Black / (White)

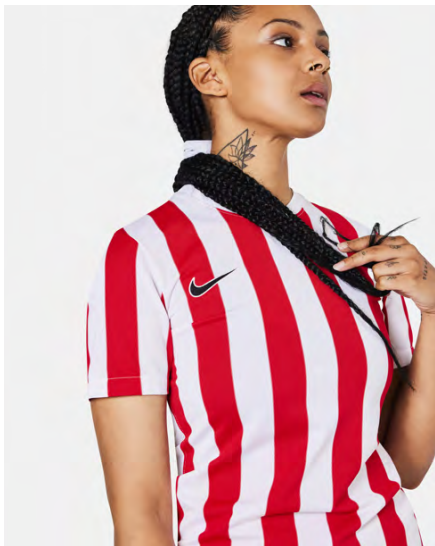


CW3819-719  
Tour Yellow /  
Black / (White)

## Product Features

- This product is made with 100% recycled polyester fibers
- Nike Dri-FIT technology moves sweat from your skin for quicker evaporation—helping you stay dry and comfortable
- Lightweight mesh on the back adds breathability
- Standard fit for a relaxed, easy feel

 Sustainable materials



Carryover

## Dri-Fit Women's Striped Division IV Jersey S/S

### Lifecycle

January 2021 - December 2024

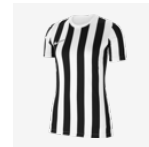
Futures only

### Available in

XS - S - M - L - XL



CW3816-060  
Anthracite /  
Black / (White)



CW3816-100  
White / Black /  
(Black)



CW3816-102  
White / Royal  
Blue / (Black)



CW3816-104  
White /  
University Red /  
(Black)




CW3816-463  
Royal Blue /  
Black / (White)



CW3816-658  
University Red /  
Black / (White)

### Product Features

- This product is made with 100% recycled polyester fibers
- Nike Dri-FIT technology moves sweat from your skin for quicker evaporation—helping you stay dry and comfortable
- Lightweight mesh on the back adds breathability
- Standard fit for a relaxed, easy feel

 Sustainable materials



## Carryover Dri-Fit Park VII Jersey S/S

### Lifecycle

January 2020 - December 2025

### Available in

S - M - L - XL - 2XL



BV6708-010  
Black / (White)



BV6708-302  
Pine Green /  
(White)



BV6708-354  
Hyper Turq /  
(Black)



BV6708-410  
Midnight Navy /  
(White)



BV6708-412  
University Blue /  
(White)



BV6708-463  
Royal Blue /  
(White)



BV6708-547  
Court Purple /  
(White)



BV6708-616  
Vivid Pink /  
(Black)



BV6708-635  
Bright Crimson /  
(Black)



BV6708-657  
University Red /  
(White)



BV6708-677  
Team Red /  
(White)



BV6708-702  
Volt / (Black)



BV6708-719  
Tour Yellow /  
(Black)



BV6708-729  
Jersey Gold /  
(Black)



BV6708-819  
Safety Orange /  
(Black)



BV6708-100 White / (Black)



BV6708-101 White / (Pine Green)



BV6708-102 White / (Royal Blue)




BV6708-103 White / (University Red)

### Product Features

- This product is made with at least 75% recycled polyester fibers
- Dri-FIT technology helps keep you dry and comfortable
- Mesh back panel adds breathability
- Slim fit for a tailored feel



 Sustainable materials



## Carryover Dri-Fit Park VII Jersey L/S

### Lifecycle

January 2020 - December 2025

### Available in

S - M - L - XL - 2XL



BV6706-010  
Black / (White)



BV6706-100  
White / (Black)



BV6706-302  
Pine Green /  
(White)



BV6706-410  
Midnight Navy /  
(White)



BV6706-412  
University Blue /  
(White)



BV6706-463  
Royal Blue /  
(White)



BV6706-657  
University Red /  
(White)



BV6706-677  
Team Red /  
(White)



BV6706-702  
Volt / (Black)




BV6706-719  
Tour Yellow /  
(Black)

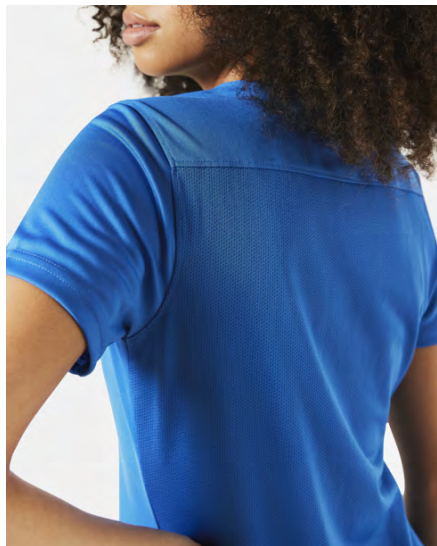


BV6706-819  
Safety Orange /  
(Black)

### Product Features

- This product is made with at least 75% recycled polyester fibers
- Dri-FIT technology helps keep you dry and comfortable
- Mesh back panel adds breathability
- Slim fit for a tailored feel

 Sustainable materials



Carryover

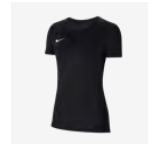
## Dri-Fit Women's Park VII Jersey

### Lifecycle

January 2020 - December 2025

### Available in

XS - S - M - L - XL - 2XL



BV6728-010  
Black / (White)



BV6728-100  
White / (Black)



BV6728-341  
Pine Green /  
(White)



BV6728-354  
Hyper Turq /  
(Black)



BV6728-410  
Midnight Navy /  
(White)



BV6728-412  
University Blue /  
(White)



BV6728-463  
Royal Blue /  
(White)



BV6728-547  
Court Purple /  
(White)




BV6728-657  
University Red /  
(White)



BV6728-719  
Tour Yellow /  
(Black)

### Product Features

- This product is made with 100% recycled polyester fibers
- Dri-FIT technology helps keep you dry and comfortable
- Mesh on the back adds breathability
- Slim fit for a tailored feel

 Sustainable materials



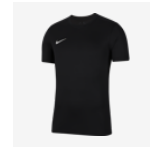
## Carryover Dri-Fit Park VII Jersey S/S (Youth)

### Lifecycle

January 2020 - December 2025

### Available in

XS - S - M - L - XL



BV6741-010  
Black / (White)



BV6741-100  
White / (Black)



BV6741-302  
Pine Green /  
(White)



BV6741-354  
Hyper Turq /  
(Black)



BV6741-410  
Midnight Navy /  
(White)



BV6741-412  
University Blue /  
(White)



BV6741-463  
Royal Blue /  
(White)



BV6741-547  
Court Purple /  
(White)



BV6741-616  
Vivid Pink /  
(Black)



BV6741-635  
Bright Crimson /  
(Black)



BV6741-657  
University Red /  
(White)



BV6741-677  
Team Red /  
(White)



BV6741-702  
Volt / (Black)



BV6741-719  
Tour Yellow /  
(Black)




BV6741-729  
Jersey Gold /  
(Black)



BV6741-819  
Safety Orange /  
(Black)

### Product Features

- This product is made with 100% recycled polyester fibers
- Dri-FIT technology helps keep you dry and comfortable
- Mesh back panel adds breathability
- Slim fit for a tailored feel

 Sustainable materials



## Carryover Dri-Fit Park VII Jersey L/S (Youth)

### Lifecycle

January 2020 - December 2025

### Available in

XS - S - M - L - XL



BV6740-010  
Black / (White)



BV6740-100  
White / (Black)



BV6740-302  
Pine Green /  
(White)



BV6740-410  
Midnight Navy /  
(White)



BV6740-412  
University Blue /  
(White)



BV6740-463  
Royal Blue /  
(White)



BV6740-657  
University Red /  
(White)



BV6740-677  
Team Red /  
(White)



BV6740-702  
Volt / (Black)



BV6740-719  
Tour Yellow /  
(Black)



BV6740-819  
Safety Orange /  
(Black)

### Product Features

- This product is made with 100% recycled polyester fibers
- Dri-FIT technology helps keep you dry and comfortable
- Mesh back panel adds breathability
- Slim fit for a tailored feel

 Sustainable materials



## Carryover Dri-Fit Academy Jersey S/S

### Lifecycle

January 2022 - December 2025

### Available in

S - M - L - XL - 2XL



DH8031-010  
Black / White /  
(White)



DH8031-100  
White /  
University Red /  
(University Red)



DH8031-102  
White / Royal  
Blue / (Royal  
Blue)



DH8031-104  
White / Black /  
(Black)



DH8031-302  
Pine Green /  
Hyper Verde /  
(White)



DH8031-411  
Midnight Navy /  
Hyper Crimson /  
(White)



DH8031-463  
Royal Blue /  
White / (White)




DH8031-657  
University Red /  
White / (White)

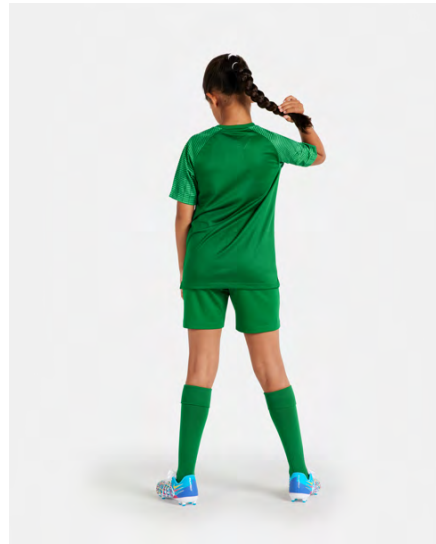


DH8031-719  
Tour Yellow /  
Black / (Black)

### Product Features

- 100% polyester
- Sweat-wicking fabric to help keep you cool during your pre-match or training routine
- Dri-FIT technology helps you stay dry, comfortable & focused
- Mesh back panel offers lightweight breathability
- Slim fit for a tailored feel
- Machine wash

 Sustainable materials



Carryover

## Academy Jersey S/S (Youth)

### Lifecycle

January 2022 - December 2025

### Available in

XS - S - M - L - XL



DH8369-010  
Black / White /  
(White)



DH8369-100  
White /  
University Red /  
(University Red)



DH8369-102  
White / Royal  
Blue / (Royal  
Blue)



DH8369-104  
White / Black /  
(Black)



DH8369-302  
Pine Green /  
Hyper Verde /  
(White)



DH8369-411  
Midnight Navy /  
Hyper Crimson /  
(White)



DH8369-463  
Royal Blue /  
White / (White)



DH8369-657  
University Red /  
White / (White)

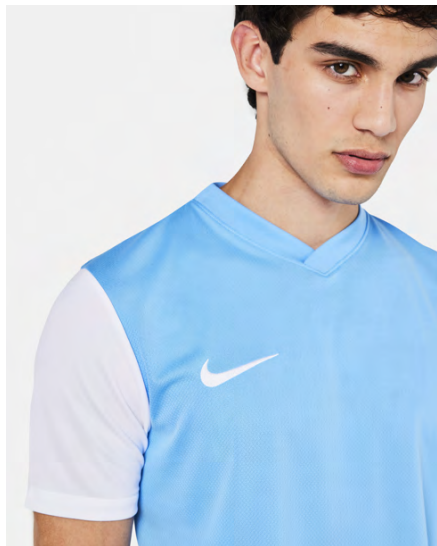


DH8369-719  
Tour Yellow /  
Black / (Black)

### Product Features

- 100% polyester
- Sweat-wicking fabric to help keep you cool during your pre-match or training routine
- Dri-FIT technology helps you stay dry, comfortable & focused
- Mesh back panel offers lightweight breathability
- Slim fit for a tailored feel
- Machine wash

 Sustainable materials



Carryover

# Dri-Fit Tiempo Premier II Jersey

## S/S

### Lifecycle

January 2022 - December 2026

### Available in

S - M - L - XL - 2XL



DH8035-010  
Black / White /  
(White)



DH8035-052  
Pewter Grey /  
Black / (Black)



DH8035-100  
White / Black /  
(Black)



DH8035-101  
White / Bright  
Crimson / (Black)



DH8035-302  
Pine Green /  
White / (White)



DH8035-410  
Midnight Navy /  
White / (White)



DH8035-411  
Midnight Navy /  
Jersey Gold /  
(White)



DH8035-412  
University Blue /  
White / (White)



DH8035-463  
Royal Blue /  
White / (White)



DH8035-547  
Court Purple /  
Volt / (White)



DH8035-657  
University Red /  
White / (White)



DH8035-702  
Volt / Midnight  
Navy / (Black)




DH8035-719  
Tour Yellow /  
Black / (Black)

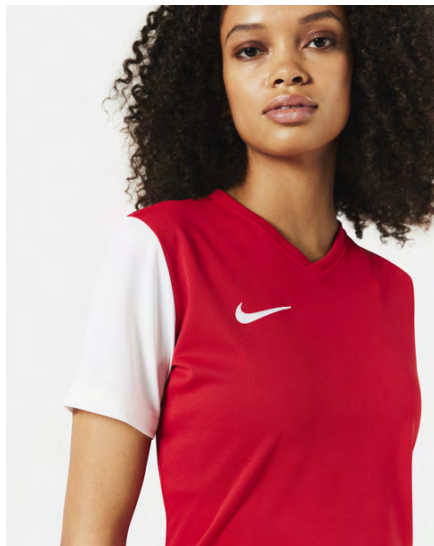


DH8035-819  
Safety Orange /  
Black / (Black)

### Product Features

- 100% polyester
- Dri-FIT technology moves sweat from your skin for quicker evaporation—helping you stay dry and comfortable
- Mesh on the back provides additional breathability
- Slim fit for a tailored feel
- Machine wash

 Sustainable materials



## Carryover Dri-Fit Women's Tiempo Premier II Jersey S/S

### Lifecycle

January 2022 - December 2026

### Available in

XS - S - M - L - XL



DH8233-010  
Black / White /  
(White)



DH8233-100  
White / Black /  
(Black)



DH8233-463  
Royal Blue /  
White / (White)



DH8233-547  
Court Purple /  
Volt / (White)



DH8233-657  
University Red /  
White / (White)



DH8233-702  
Volt / Midnight  
Navy / (Black)



DH8233-719  
Tour Yellow /  
Black / (Black)

### Product Features

- 100% polyester
- Dri-FIT technology moves sweat from your skin for quicker evaporation—helping you stay dry and comfortable
- Mesh on the back provides additional breathability
- Slim fit for a tailored feel
- Machine wash



 Sustainable materials



Carryover

# Dri-Fit Tiempo Premier II Jersey S/S (Youth)

## Lifecycle

January 2022 - December 2026

## Available in

XS - S - M - L - XL



DH8389-010  
Black / White /  
(White)



DH8389-052  
Pewter Grey /  
Black / (Black)



DH8389-100  
White / Black /  
(Black)



DH8389-101  
White / Bright  
Crimson / (Black)



DH8389-302  
Pine Green /  
White / (White)



DH8389-410  
Midnight Navy /  
White / (White)



DH8389-411  
Midnight Navy /  
Jersey Gold /  
(White)



DH8389-412  
University Blue /  
White / (White)



DH8389-463  
Royal Blue /  
White / (White)



DH8389-547  
Court Purple /  
Volt / (White)



DH8389-657  
University Red /  
White / (White)



DH8389-702  
Volt / Midnight  
Navy / (Black)



DH8389-719  
Tour Yellow /  
Black / (Black)



DH8389-819  
Safety Orange /  
Black / (Black)

## Product Features

- 100% polyester
- Dri-FIT technology moves sweat from your skin for quicker evaporation—helping you stay dry and comfortable
- Mesh on the back provides additional breathability
- Slim fit for a tailored feel
- Machine wash

 Sustainable materials



## Carryover Dri-Fit Precision VI Jersey

### Lifecycle

January 2023 - December 2024

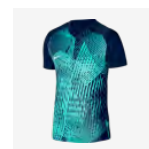
Futures only

### Available in

XS - S - M - L - XL - 2XL - 3XL



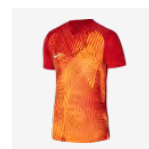
DR0944-010  
Black / Cool  
Grey / (White)



DR0944-410  
Midnight Navy /  
Hyper Turq /  
(White)



DR0944-547  
Court Purple /  
Chlorine Blue /  
(White)



DR0944-657  
University Red /  
Bright Citrus /  
(White)



DR0944-702  
Volt / Black /  
(White)

### Product Features

- 100% Polyester
- Nike Dri-FIT technology moves sweat away from your skin for quicker evaporation, helping you stay dry and comfortable
- Lightweight sweat-wicking fabric
- Breathable mesh back panel lets air flow to help keep you cool
- Slim, streamlined fit
- Embroidered Swoosh design
- Machine wash

 Sustainable materials



## Carryover Dri-Fit Strike III Jersey

### Lifecycle

January 2023 - December 2024

### Available in

XS - S - M - L - XL - 2XL - 3XL



DR0889-010  
Black / Black /  
Black / (White)



DR0889-011  
Black / Volt /  
Volt / (White)



DR0889-052  
Pewter Grey /  
Black / Black /  
(White)



DR0889-100  
White / White /  
White / (Black)



DR0889-411  
Midnight Navy /  
Photo Blue /  
Photo Blue /  
(White)




DR0889-463  
Royal Blue /  
Obsidian /  
Obsidian /  
(White)



DR0889-657  
University Red /  
Bright Crimson /  
Bright Crimson /  
(White)

### Product Features

- 100% Polyester
- Nike Dri-FIT technology moves sweat away from your skin for quicker evaporation, helping you stay dry and comfortable
- Sweat-wicking fabric works with breathable mesh to help keep you cool and composed during fast-paced play
- Breathable mesh at the back and under the arms
- Ribbed insets stretch with you to let you move without restrictions
- Slim, streamlined fit
- Embroidered Swoosh design
- Machine wash

 Sustainable materials



## Carryover Dri-Fit Trophy V Jersey

### Lifecycle

January 2023 - December 2026

### Available in

XS - S - M - L - XL - 2XL - 3XL



DR0933-010  
Black / White /  
White / (White)



DR0933-052  
Pewter Grey /  
Bright Crimson /  
Bright Crimson /  
(Black)



DR0933-100  
White / Black /  
Black / (Black)



DR0933-302  
Pine Green /  
Gorge Green /  
Gorge Green /  
(White)



DR0933-354  
Hyper Turq /  
Chlorine Blue /  
Chlorine Blue /  
(White)



DR0933-410  
Midnight Navy /  
Photo Blue /  
Photo Blue /  
(White)



DR0933-463  
Royal Blue /  
Midnight Navy /  
Midnight Navy /  
(White)



DR0933-547  
Court Purple /  
Black / Black /  
(White)



DR0933-657  
University Red /  
Team Red /  
Team Red /  
(White)



DR0933-719  
Tour Yellow /  
University Gold /  
University Gold /  
(Black)



DR0933-819  
Safety Orange /  
Team Orange /  
Safety Orange /  
(Black)

### Product Features

- 100% Polyester
- Nike Dri-FIT technology moves sweat away from your skin for quicker evaporation, helping you stay dry and comfortable
- Slim, streamlined fit to keep the air flowing and distractions low
- Breathable mesh teams with lightweight knit fabric
- Mesh back panel lets air flow to help keep you cool
- Ribbed inset at neck
- Embroidered Swoosh design
- Machine wash

 Sustainable materials



Carryover

## Dri-Fit Vaporknit IV Jersey

### Lifecycle

January 2023 - December 2024

Futures only

### Available in

XS - S - M - L - XL - 2XL - 3XL



DR0666-010  
Black / Black /  
Black / (White)



DR0666-100  
White / White /  
White / (Black)



DR0666-463  
Royal Blue /  
Royal Blue /  
Obsidian /  
(White)

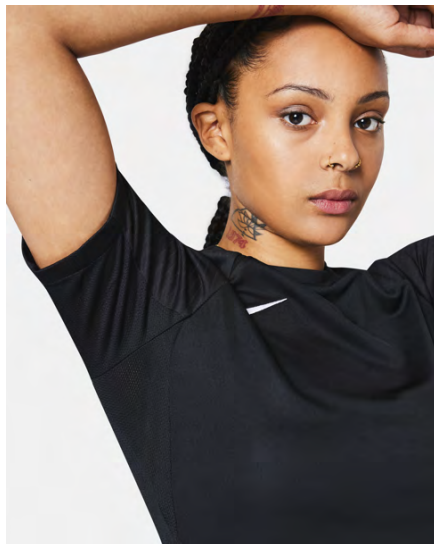
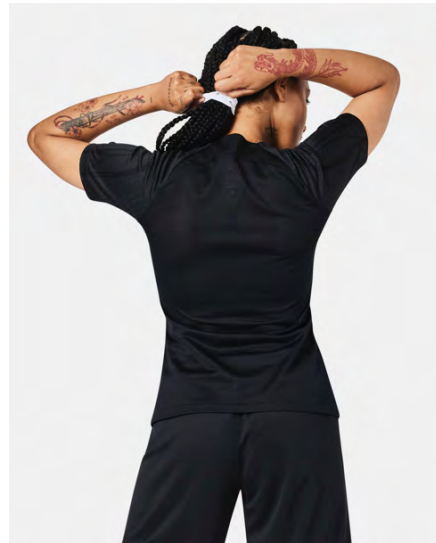


DR0666-657  
University Red /  
University Red /  
Bright Crimson /  
(White)

### Product Features

- 100% Polyester
- Nike Dri-FIT ADV technology combines moisture-wicking fabric with advanced engineering and features to help you stay dry and comfortable
- Breathable knit fabric helps keep you cool while reducing cling against your skin
- Lightweight design has ribbed insets and plenty of stretch to let you move without restrictions
- Moisture-wicking design helps keep you dry and cool under match-day pressure
- Heat-transfer silicone Swoosh design
- Machine wash

 Sustainable materials



## Carryover Dri-Fit Women's Strike III Jersey

### Lifecycle

January 2023 - December 2024

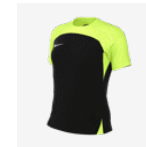
Futures only

### Available in

XS - S - M - L - XL - 2XL



DR0909-010  
Black / Black /  
Black / (White)



DR0909-011  
Black / Volt /  
Volt / (White)



DR0909-052  
Pewter Grey /  
Black / Black /  
(White)



DR0909-100  
White / White /  
White / (Black)



DR0909-411  
Midnight Navy /  
Photo Blue /  
Photo Blue /  
(White)



DR0909-463  
Royal Blue /  
Obsidian /  
Obsidian /  
(White)



DR0909-657  
University Red /  
Bright Crimson /  
Bright Crimson /  
(White)

### Product Features

- 100% Polyester
- Nike Dri-FIT technology moves sweat away from your skin for quicker evaporation, helping you stay dry and comfortable
- Sweat-wicking fabric works with breathable mesh to help keep you cool and composed during fast-paced play
- Breathable mesh at the back and under the arms
- Ribbed insets stretch with you to let you move without restrictions
- Slim, streamlined fit
- Embroidered Swoosh design

 Sustainable materials



## Carryover Dri-Fit Precision VI Jersey (Youth)

### Lifecycle

January 2023 - December 2024

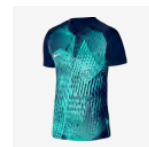
**Futures only**

### Available in

XS - S - M - L - XL



DR0950-010  
Black / Cool  
Grey / (White)



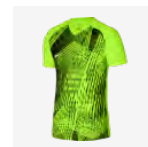
DR0950-410  
Midnight Navy /  
Hyper Turq /  
(White)



DR0950-547  
Court Purple /  
Chlorine Blue /  
(White)




DR0950-657  
University Red /  
Bright Citrus /  
(White)



DR0950-702  
Volt / Black /  
(White)

### Product Features

- 100% Polyester
- Nike Dri-FIT technology moves sweat away from your skin for quicker evaporation, helping you stay dry and comfortable
- Lightweight sweat-wicking fabric
- Breathable mesh back panel lets air flow to help keep you cool
- Slim, streamlined fit
- Embroidered Swoosh design
- Machine wash

 Sustainable materials



## Carryover Dri-Fit Strike III Jersey (Youth)

### Lifecycle

January 2023 - December 2024

### Available in

XS - S - M - L - XL



DR0912-010  
Black / Black /  
Black / (White)



DR0912-011  
Black / Volt /  
Volt / (White)



DR0912-052  
Pewter Grey /  
Black / Black /  
(White)



DR0912-100  
White / White /  
White / (Black)



DR0912-411  
Midnight Navy /  
Photo Blue /  
Photo Blue /  
(White)



DR0912-463  
Royal Blue /  
Obsidian /  
Obsidian /  
(White)



DR0912-657  
University Red /  
Bright Crimson /  
Bright Crimson /  
(White)

### Product Features

- 100% Polyester
- Nike Dri-FIT technology moves sweat away from your skin for quicker evaporation, helping you stay dry and comfortable
- Sweat-wicking fabric works with breathable mesh to help keep you cool and composed during fast-paced play
- Breathable mesh at the back and under the arms
- Ribbed insets stretch with you to let you move without restrictions
- Slim, streamlined fit
- Embroidered Swoosh design
- Machine wash



 Sustainable materials



## Carryover Dri-Fit Trophy V Jersey (Youth)

### Lifecycle

January 2023 - December 2026

### Available in

XS - S - M - L - XL



DR0942-010  
Black / White /  
White / (White)



DR0942-052  
Pewter Grey /  
Bright Crimson /  
Bright Crimson /  
(Black)



DR0942-100  
White / Black /  
Black / (Black)



DR0942-302  
Pine Green /  
Gorge Green /  
Gorge Green /  
(White)



DR0942-354  
Hyper Turq /  
Chlorine Blue /  
Chlorine Blue /  
(White)



DR0942-410  
Midnight Navy /  
Photo Blue /  
Photo Blue /  
(White)



DR0942-463  
Royal Blue /  
Midnight Navy /  
Midnight Navy /  
(White)



DR0942-547  
Court Purple /  
Black / Black /  
(White)



DR0942-657  
University Red /  
Team Red /  
Team Red /  
(White)




DR0942-719  
Tour Yellow /  
University Gold /  
University Gold /  
(Black)



DR0942-819  
Safety Orange /  
Team Orange /  
Safety Orange /  
(Black)

### Product Features

- 100% Polyester
- Nike Dri-FIT technology moves sweat away from your skin for quicker evaporation, helping you stay dry and comfortable
- Slim, streamlined fit to keep the air flowing and distractions low
- Breathable mesh teams with lightweight knit fabric
- Mesh back panel lets air flow to help keep you cool
- Ribbed inset at neck
- Embroidered Swoosh design
- Machine wash

 Sustainable materials



New

## Dri-Fit Challenge V Jersey

### Lifecycle

January 2024 - December 2025

### Available in

XS - S - M - L - XL - 2XL - 3XL



FD7412-010  
Black / White /  
(White)



FD7412-100  
White / Black /  
(Black)



FD7412-463  
Royal Blue /  
White / (White)



FD7412-657  
University Red /  
White / (White)

### Product Features

- 100% polyester
- Nike Dri-FIT technology moves sweat away from your skin for quicker evaporation, helping you stay dry and comfortable
- Slim fit for a tailored look and feel

 Sustainable materials



New

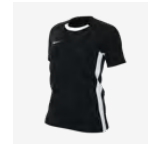
## Dri-Fit Women's Challenge V Jersey

### Lifecycle

January 2024 - December 2025

### Available in

XS - S - M - L - XL - 2XL



FD7420-010  
Black / White /  
(White)



FD7420-100  
White / Black /  
(Black)




FD7420-463  
Royal Blue /  
White / (White)



FD7420-657  
University Red /  
White / (White)

### Product Features

- 100% polyester
- Nike Dri-FIT technology moves sweat away from your skin for quicker evaporation, helping you stay dry and comfortable
- New women's fit adds more space to the waist, allowing them to be at their best

 Sustainable materials



New

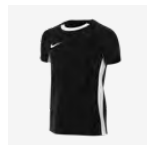
## Dri-Fit Challenge V Jersey (Kids)

### Lifecycle

January 2024 - December 2025

### Available in

XS - S - M - L - XL



FD7426-010  
Black / White /  
(White)



FD7426-100  
White / Black /  
(Black)



FD7426-463  
Royal Blue /  
White / (White)

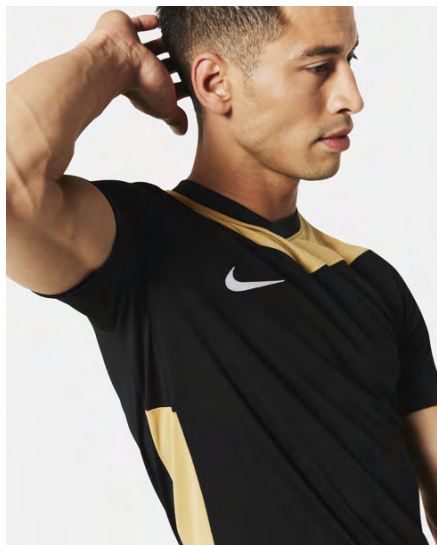


FD7426-657  
University Red /  
White / (White)

### Product Features

- 100% polyester
- Nike Dri-FIT technology moves sweat away from your skin for quicker evaporation, helping you stay dry and comfortable
- Slim fit for a tailored look and feel

 Sustainable materials



New

## Dri-Fit Park Derby IV Jersey

### Lifecycle

January 2024 - December 2027

### Available in

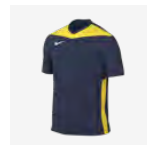
XS - S - M - L - XL - 2XL - 3XL



FD7430-011  
Black / Jersey  
Gold / (White)



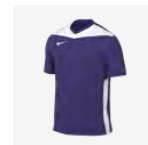
FD7430-303  
Pine Green /  
Tour Yellow /  
(White)



FD7430-410  
Midnight Navy /  
Tour Yellow /  
(White)



FD7430-464  
Royal Blue /  
University Red /  
(White)



FD7430-547  
Court Purple /  
White / (White)



FD7430-658  
University Red /  
Midnight Navy /  
(White)




FD7430-677  
Team Red /  
University Blue /  
(White)



FD7430-720  
Tour Yellow /  
Royal Blue /  
(Black)

### Product Features

- 100% polyester
- Nike Dri-FIT technology moves sweat away from your skin for quicker evaporation, helping you stay dry and comfortable
- Slim fit for a tailored feel

 Sustainable materials



New

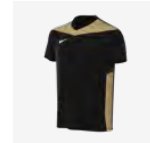
## Dri-Fit Park Derby IV Jersey (Kids)

### Lifecycle

January 2024 - December 2027

### Available in

XS - S - M - L - XL



FD7438-011  
Black / Jersey  
Gold / (White)



FD7438-303  
Pine Green /  
White / (White)



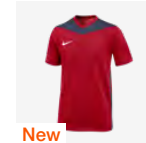
FD7438-410  
Midnight Navy /  
Tour Yellow /  
(White)



FD7438-464  
Royal Blue /  
University Red /  
(White)



FD7438-547  
Court Purple /  
White / (White)



New  
FD7438-658  
University Red /  
Midnight Navy /  
(White)



FD7438-677  
Team Red /  
University Blue /  
(White)



FD7438-720  
Tour Yellow /  
Royal Blue /  
(Black)

### Product Features

- 100% polyester
- Nike Dri-FIT technology moves sweat away from your skin for quicker evaporation, helping you stay dry and comfortable
- Slim fit for a tailored feel

 Sustainable materials



New

## Dri-Fit Women's Academy Jersey

### Lifecycle

January 2024 - December 2025

### Available in

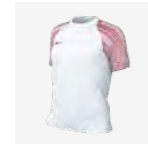
XS - S - M - L - XL



FZ4887-010  
Black / White /  
(White)



FZ4887-102  
White / White /  
Black / (Black)



FZ4887-104  
White / White /  
University Red /  
(University Red)




FZ4887-463  
Royal Blue /  
Royal Blue /  
(White)



FZ4887-657  
University Red /  
White / (White)

### Product Features

- 100% polyester
- Sweat-wicking fabric to help keep you cool during your pre-match or training routine
- Dri-FIT technology helps you stay dry, comfortable & focused
- Mesh back panel offers lightweight breathability
- Slim fit for a tailored feel
- Machine wash

 Sustainable materials



## Carryover Dri-Fit Park III Knit Short

### Lifecycle

January 2020 - December 2025

### Available in

S - M - L - XL - 2XL



BV6855-010  
Black / (White)



BV6855-017  
Pewter Grey /  
(Black)



BV6855-302  
Pine Green /  
(White)



BV6855-354  
Hyper Turq /  
(Black)



BV6855-410  
Midnight Navy /  
(White)



BV6855-412  
University Blue /  
(White)



BV6855-463  
Royal Blue /  
(White)



BV6855-547  
Court Purple /  
(White)



BV6855-635  
Bright Crimson /  
(Black)



BV6855-657  
University Red /  
(White)



BV6855-677  
Team Red /  
(White)



BV6855-702  
Volt / (Black)



BV6855-719  
Tour Yellow /  
(Black)



BV6855-739  
University Gold /  
(Black)



BV6855-819  
Safety Orange /  
(Black)



BV6855-100 White / (Black)



BV6855-102 White / (Pine Green)



BV6855-103 White / (University Red)



BV6855-104 White / (Royal Blue)

### Product Features

- This product is made with 100% recycled polyester fibers
- Dri-FIT technology helps you stay dry, comfortable and focused
- Stretchy waistband is lined with mesh for breathability
- Slim fit for a tailored feel



 Sustainable materials



## Carryover Dri-Fit Women's Park III Knit Short

### Lifecycle

January 2020 - December 2025

### Available in

XS - S - M - L - XL - 2XL



BV6860-010  
Black / (White)



BV6860-100  
White / (Black)



BV6860-410  
Midnight Navy /  
(White)



BV6860-412  
University Blue /  
(White)



BV6860-463  
Royal Blue /  
(White)



BV6860-547  
Court Purple /  
(White)



BV6860-657  
University Red /  
(White)




BV6860-677  
Team Red /  
(White)



BV6860-719  
Tour Yellow /  
(Black)

### Product Features

- This product is made with 100% recycled polyester fibers
- Dri-FIT technology helps you stay dry, comfortable and focused
- Stretchy waistband is lined with mesh for breathability
- Slim fit for a tailored feel

 Sustainable materials



## Carryover Dri-Fit Park III Knit Short (Youth)

### Lifecycle

January 2020 - December 2025

### Available in

XS - S - M - L - XL



BV6865-010  
Black / (White)



BV6865-017  
Pewter Grey /  
(Black)



BV6865-100  
White / (Black)



BV6865-302  
Pine Green /  
(White)



BV6865-354  
Hyper Turq /  
(Black)



BV6865-410  
Midnight Navy /  
(White)



BV6865-412  
University Blue /  
(White)



BV6865-463  
Royal Blue /  
(White)



BV6865-547  
Court Purple /  
(White)



BV6865-635  
Bright Crimson /  
(Black)



BV6865-657  
University Red /  
(White)



BV6865-677  
Team Red /  
(White)



BV6865-702  
Volt / (Black)



BV6865-719  
Tour Yellow /  
(Black)




BV6865-739  
University Gold /  
(Black)



BV6865-819  
Safety Orange /  
(Black)

### Product Features

- This product is made with 100% recycled polyester fibers
- Dri-FIT technology helps you stay dry, comfortable and focused
- Stretchy waistband is lined with mesh for breathability
- Slim fit for a tailored feel

 Sustainable materials



Carryover

## Dri-Fit Laser Woven Short V

### Lifecycle

January 2022 - December 2025

### Available in

S - M - L - XL - 2XL



DH8111-010  
Black / White /  
(White)



DH8111-100  
White / Black /  
(Black)



DH8111-302  
Pine Green /  
White / (White)



DH8111-410  
Midnight Navy /  
White / (White)



DH8111-412  
University Blue /  
White / (White)




DH8111-463  
Royal Blue /  
White / (White)



DH8111-657  
University Red /  
White / (White)

### Product Features

- 100% polyester
- Sweat-wicking fabric and breathable mesh to keep you cool and composed
- Nike Dri-FIT technology moves sweat away from your skin for quicker evaporation, helping you stay dry and comfortable
- Mesh waistband and back panel offers lightweight breathability
- Slim fit for a tailored feel
- Machine wash

 Sustainable materials



## Carryover Dri-Fit Laser Woven Short V (Youth)

### Lifecycle

January 2022 - December 2025

### Available in

XS - S - M - L - XL



DH8408-010  
Black / White /  
(White)



DH8408-100  
White / Black /  
(Black)



DH8408-302  
Pine Green /  
White / (White)



DH8408-410  
Midnight Navy /  
White / (White)



DH8408-412  
University Blue /  
White / (White)



DH8408-463  
Royal Blue /  
White / (White)



DH8408-657  
University Red /  
White / (White)

### Product Features

- 100% polyester
- Sweat-wicking fabric and breathable mesh to keep you cool and composed
- Nike Dri-FIT technology moves sweat away from your skin for quicker evaporation, helping you stay dry and comfortable
- Mesh waistband and back panel offers lightweight breathability
- Slim fit for a tailored feel
- Machine wash

 Sustainable materials



## Carryover Dri-Fit League III Knit Short

### Lifecycle

January 2023 - December 2026

### Available in

XS - S - M - L - XL - 2XL - 3XL



DR0960-010  
Black / White /  
(White)



DR0960-052  
Pewter Grey /  
Black / (Black)



DR0960-100  
White / Black /  
(Black)



DR0960-302  
Pine Green /  
White / (White)



DR0960-410  
Midnight Navy /  
White / (White)




DR0960-463  
Royal Blue /  
White / (White)



DR0960-657  
University Red /  
White / (White)

### Product Features

- 100% Polyester
- Nike Dri-FIT technology moves sweat away from your skin for quicker evaporation, helping you stay dry and comfortable
- Slim, streamlined fit
- Breathable mesh insets at the sides help keep you cool
- 8" inseam
- Elastic waistband with drawcord
- Embroidered Swoosh design
- Machine wash

 Sustainable materials



## Carryover Dri-Fit Vaporknit IV Short

### Lifecycle

January 2023 - December 2024

**Futures only**

### Available in

XS - S - M - L - XL - 2XL - 3XL



DR0952-010  
Black / Black /  
(White)



DR0952-100  
White / White /  
(Black)



DR0952-463  
Royal Blue /  
Obsidian /  
(White)



DR0952-657  
University Red /  
Bright Crimson /  
(White)

### Product Features

- 100% Polyester
- Nike Dri-FIT ADV technology combines moisture-wicking fabric with advanced engineering and features to help you stay dry and comfortable
- Breathable knit fabric helps keep you cool while reducing cling against your skin
- Moisture-wicking design helps keep you dry and cool under match-day pressure
- Lightweight fabric in a slim, streamlined fit
- 8" inseam
- Elastic waistband
- Heat-transfer silicone Swoosh design
- Machine wash

 Sustainable materials



## Carryover Dri-Fit League III Knit Short (Youth)

### Lifecycle

January 2023 - December 2026

### Available in

XS - S - M - L - XL



DR0968-010  
Black / White /  
(White)



DR0968-052  
Pewter Grey /  
Black / (Black)



DR0968-100  
White / Black /  
(Black)



DR0968-302  
Pine Green /  
White / (White)



DR0968-410  
Midnight Navy /  
White / (White)



DR0968-463  
Royal Blue /  
White / (White)



DR0968-657  
University Red /  
White / (White)

### Product Features

- 100% Polyester
- Nike Dri-FIT technology moves sweat away from your skin for quicker evaporation, helping you stay dry and comfortable
- Slim, streamlined fit
- Breathable mesh insets at the sides help keep you cool
- 8" inseam
- Elastic waistband with drawcord
- Embroidered Swoosh design
- Machine wash

 Sustainable materials



New

## Dri-Fit Venom IV Woven Short

### Lifecycle

January 2024 - December 2027

Futures only

### Available in

XS - S - M - L - XL - 2XL - 3XL



FD7440-010  
Black / White /  
(White)



FD7440-100  
White / Black /  
(Black)



FD7440-463  
Royal Blue /  
White / (White)



FD7440-657  
University Red /  
White / (White)

### Product Features

- Polyester 87% / Spandex 13%
- Nike Dri-FIT technology moves sweat away from your skin for quicker evaporation, helping you stay dry and comfortable
- Men's inseam is 20cm
- Slim fit for a tailored look and feel





## Carryover Dri-Fit Academy Sock

### Lifecycle

January 2017 - December 2025

### Available in

XS - S - M - L - XL



SX5728-010  
Black / (White)



**New**  
SX5728-019  
Black / (Jersey  
Gold)



SX5728-057  
Pewter Grey /  
(Black) / (Black)



SX5728-100  
White / (Black)



SX5728-101  
White / (Royal  
Blue)



SX5728-302  
Pine Green /  
(White)



SX5728-411  
Midnight Navy /  
(White)



SX5728-412  
University Blue /  
(White)



SX5728-463  
Royal Blue /  
(White)



SX5728-545  
Court Purple /  
(White)



SX5728-648  
University Red /  
(White)



SX5728-670  
Team Red /  
(White)



SX5728-702  
Volt / (Black)




SX5728-719  
Tour Yellow /  
(Black)



SX5728-816  
Safety Orange /  
(Black)

### Product Features

- 97% Nylon/3% Spandex
- Dri-FIT technology helps keep feet dry and comfortable
- Cushioning in high-wear areas helps absorb impact
- Dynamic arch provides a supportive fit and feel

 Sustainable materials



New

## Dri-Fit Strike Team Crew Sock

### Lifecycle

January 2024 - December 2025

### Available in

XS - S - M - L - XL



New

FZ8485-010  
Black / (White)



New

FZ8485-100  
White / (Black)



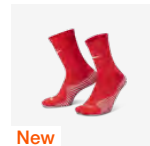
New

FZ8485-410  
Midnight Navy /  
(White)



New

FZ8485-463  
Royal Blue /  
(White)




New

FZ8485-657  
University Red /  
(White)

### Product Features

- Nike Dri-FIT technology moves sweat away from your skin for quicker evaporation, helping you stay dry and comfortable
- Cushioning in high-wear areas helps absorb impact as you run

 Sustainable materials



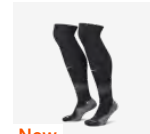
**New**  
**Dri-Fit Strike Knee High Sock**

**Lifecycle**

January 2024 - December 2025

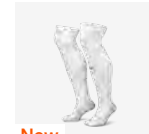
**Available in**

XS - S - M - L - XL



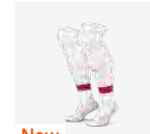
**New**

FQ8253-010  
 Black /  
 Anthracite /  
 (White)



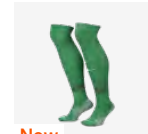
**New**

FQ8253-100  
 White / (Black)



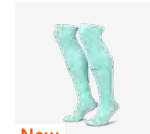
**New**

FQ8253-103  
 White /  
 University Red /  
 (University Red)



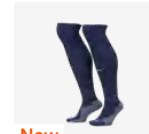
**New**

FQ8253-302  
 Pine Green /  
 Gorge Green /  
 Black / (White)



**New**

FQ8253-354  
 Hyper Turq /  
 (Black)



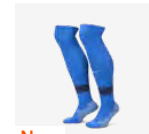
**New**

FQ8253-410  
 Midnight Navy /  
 (White)



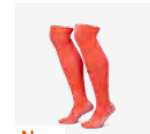
**New**

FQ8253-412  
 University Blue /  
 Italy Blue /  
 (Midnight Navy)



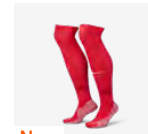
**New**

FQ8253-463  
 Royal Blue /  
 Midnight Navy /  
 (White)



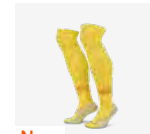
**New**

FQ8253-635  
 Bright Crimson /  
 (Black)



**New**

FQ8253-657  
 University Red /  
 Gym Red /  
 (White)



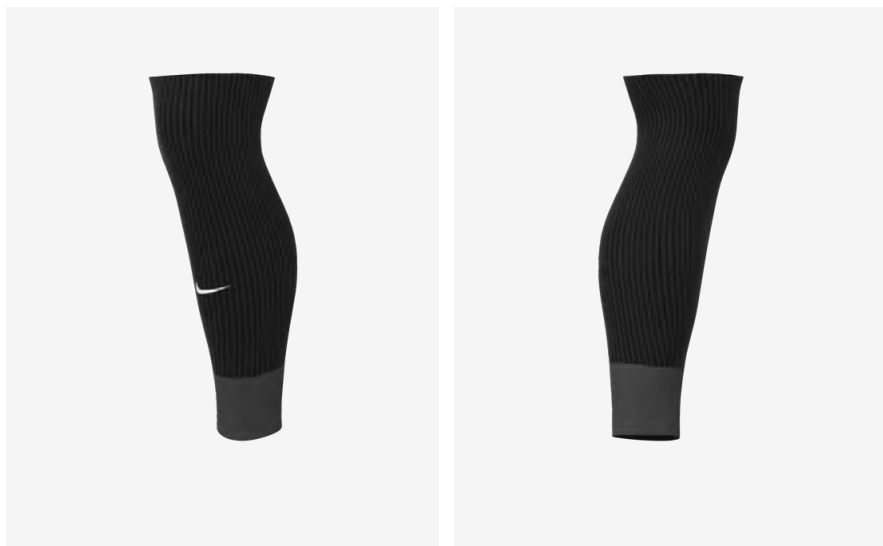
**New**

FQ8253-719  
 Tour Yellow /  
 University Gold /  
 (Black)

**Product Features**

- Nike Dri-FIT technology moves sweat away from your skin for quicker evaporation, helping you stay dry and comfortable
- Knee-high length gives you plenty of coverage

 Sustainable materials



New

## Dri-Fit Strike Sleeve

### Lifecycle

January 2024 - December 2025

### Available in

4-5.5 - 6-7.5 - 8-9.5 - 10- - 12- - 14-16 -  
S/M - L/XL



New

FQ8282-010  
Black /  
Anthracite /  
(White)



New

FQ8282-100  
White / (Black)



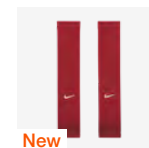
New

FQ8282-410  
Midnight Navy /  
(White)



New

FQ8282-463  
Royal Blue /  
Midnight Navy /  
(White)



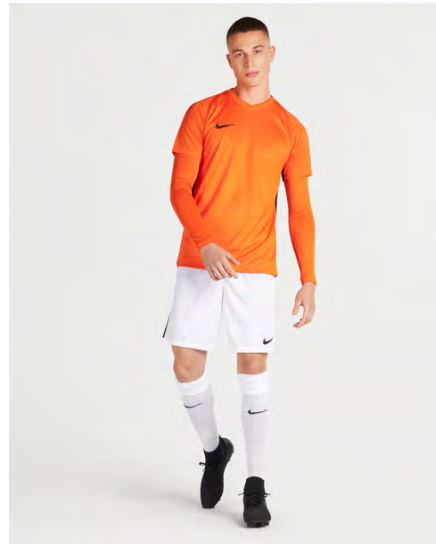
New

FQ8282-657  
University Red /  
Gym Red /  
(White)

### Product Features

- Nike Dri-FIT technology moves sweat away from your skin for quicker evaporation, helping you stay dry and comfortable
- Stretch design fits comfortably over your shin guard

 Sustainable materials



## Carryover Dri-Fit Park First Layer

### Lifecycle

January 2019 - December 2027

### Available in

S - M - L - XL - 2XL



AV2609-010  
Black / (White)



AV2609-057  
Pewter Grey /  
(White)



AV2609-100  
White / (Cool  
Grey)



AV2609-302  
Pine Green /  
(White)



AV2609-410  
Midnight Navy /  
(White)



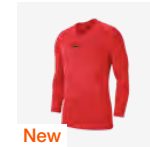
AV2609-412  
University Blue /  
(White)



AV2609-463  
Royal Blue /  
(White)



AV2609-547  
Court Purple /  
(White)



AV2609-635  
Bright Crimson /  
(Black)



AV2609-657  
University Red /  
(White)



AV2609-702  
Volt / (Black)




AV2609-719  
Tour Yellow /  
(Black)



AV2609-819  
Safety Orange /  
(White)

### Product Features

- This product is made with 100% recycled polyester fibers
- Dri-FIT technology helps you stay dry, comfortable and focused
- Stretchy fabric with a smooth face provides a low-friction underlayer
- Invisible thumb loops stay hidden when not in use
- Tight fit gives a streamlined look and feel
- Raglan sleeves eliminate the shoulder seam to help you move freely

 Sustainable materials



## Carryover Dri-Fit Park First Layer (Youth)

### Lifecycle

January 2019 - December 2027

### Available in

XS - S - M - L - XL



AV2611-010  
Black / (White)



AV2611-057  
Pewter Grey /  
(White)



AV2611-100  
White / (Cool  
Grey)



AV2611-302  
Pine Green /  
(White)



AV2611-410  
Midnight Navy /  
(White)



AV2611-412  
University Blue /  
(White)



AV2611-463  
Royal Blue /  
(White)



AV2611-547  
Court Purple /  
(White)



AV2611-635  
Bright Crimson /  
(Black)



AV2611-657  
University Red /  
(White)



AV2611-702  
Volt / (Black)



AV2611-719  
Tour Yellow /  
(Black)



AV2611-819  
Safety Orange /  
(White)

### Product Features

- This product is made with 100% recycled polyester fibers
- Dri-FIT technology helps you stay dry, comfortable and focused
- Stretchy fabric with a smooth face provides a low-friction underlayer
- Invisible thumb loops stay hidden when not in use
- Tight fit gives a streamlined look and feel
- Raglan sleeves eliminate the shoulder seam to help you move freely

 Sustainable materials



Carryover

## Dri-Fit Women's Park First layer

### Lifecycle

January 2019 - December 2027

### Available in

XS - S - M - L - XL



AV2610-010  
Black / (White)



AV2610-057  
Pewter Grey /  
(White)



AV2610-100  
White / (Cool  
Grey)



AV2610-302  
Pine Green /  
(White)



AV2610-410  
Midnight Navy /  
(White)



AV2610-412  
University Blue /  
(White)



AV2610-463  
Royal Blue /  
(White)



AV2610-657  
University Red /  
(White)

### Product Features

- This product is made with 100% recycled polyester fibers
- Park First Layer Jersey provides coverage that won't cut down your speed
- Dri-FIT technology helps you stay dry, comfortable and focused
- Stretchy fabric with a smooth face provides a low-friction underlayer
- Invisible Thumb Loops stay hidden when not in use
- Raglan sleeves eliminate the shoulder seam to help you move freely
- Swoosh design trademark is heat transferred on the center of the chest



Carryover

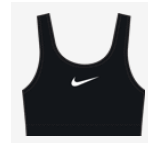
## Dri-Fit High-Support Non-Padded Sports Bra

### Lifecycle

July 2023 - December 2024

### Available in

XSA-C - SA-C - MA-B - LA-B - XLA-B -  
1XA-B - 2XA-B - 3XA-B - XSD-E - SC-E  
- MC-E - LC-E - XLC-E - 1XC-E - 2XC-E  
- 3XC-E - XSF-G - SF-G - MF-G - LF-G



DX6815-010  
Black / Iron Grey  
/ White



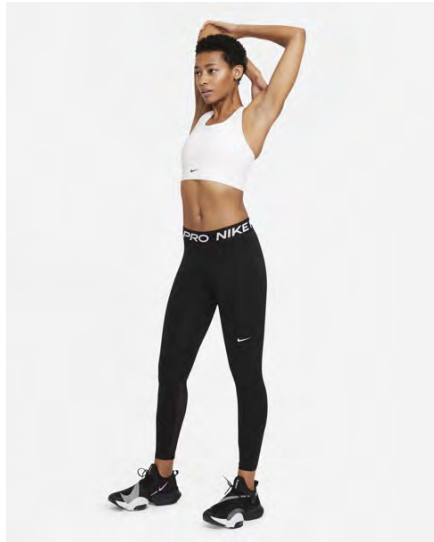
DX6815-100  
White / Black /  
White

### Product Features

- 64% Polyester / 36% Elastane
- Nike Dri-FIT technology moves sweat away from your skin for quicker evaporation, helping you stay dry and comfortable
- The adjustable bottom band and longer neckline, back and armholes make it easy to slip on and off while giving you a customized fit
- Interior mesh lining, mesh back panels and a back cutout keep things breezy
- With ultra-stretchy fabric that adapts to your needs in the moment and moves with you like a second skin, your bra will be the last thing on your mind while you focus on your warmup, reps and cool down
- Available as of Fall 2023



 Sustainable materials



Carryover

## Women's Dri-Fit Nike Pro Tight

### Lifecycle

January 2021 - December 2024

### Available in

XS - S - M - L - XL - 2XL



CZ9779-010  
Black / (White)

### Product Features

- BREATHABLE AND SUPPORTIVE
- Nike Dri-FIT technology helps you stay dry, comfortable and focused
- A wide, smooth mid-rise waistband feels supportive around your core
- Ventilated mesh panels along the back of the lower legs create airflow for breathability
- This product is made with at least 50% recycled polyester fibers



## Carryover Dri-Fit Strike Nike Pro Short

### Lifecycle

January 2022 - December 2027

### Available in

XS - S - M - L - XL - 2XL



DH8128-010  
Black / (White)



**New**  
DH8128-052  
Pewter Grey /  
(Black)



DH8128-100  
White / (Black)



DH8128-302  
Pine Green /  
(White)



DH8128-410  
Midnight Navy /  
(White)



DH8128-412  
University Blue /  
(White)



DH8128-463  
Royal Blue /  
(White)



DH8128-547  
Court Purple /  
(White)



DH8128-635  
Bright Crimson /  
(Black)



DH8128-657  
University Red /  
(White)



DH8128-702  
Volt / (Black)



DH8128-719  
Tour Yellow /  
(Black)



DH8128-819  
Safety Orange /  
(Black)

### Product Features

- 93% polyester/7% elastane
- Sweat-wicking fabric helps keep you cool and composed while fine-tuning your skills
- Nike Pro fabric provides a supportive layer that helps keep you cool when the action heats up
- Stretchy fabric has a compressive feel to keep you moving freely while training

## Carryover Dri-Fit Women's Strike Nike Pro Short



### Lifecycle

January 2022 - December 2027

### Available in

XS - S - M - L - XL



DH8327-010  
Black / (White)



DH8327-052  
Pewter Grey /  
(Black)



DH8327-100  
White / (Black)



DH8327-302  
Pine Green /  
(White)



DH8327-410  
Midnight Navy /  
(White)



DH8327-412  
University Blue /  
(White)



DH8327-463  
Royal Blue /  
(White)



DH8327-657  
University Red /  
(White)

### Product Features

- 93% polyester/7% elastane
- Sweat-wicking fabric helps keep you cool and composed while fine-tuning your skills
- Nike Pro fabric provides a supportive layer that helps keep you cool when the action heats up
- Stretchy fabric has a compressive feel to keep you moving freely while training
- Tight fit for a body-hugging feel
- Machine wash



New

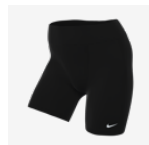
## Women's Nike Pro Short

### Lifecycle

January 2024 - December 2027

### Available in

XS - S - M - L - XL



FN2374-010  
Black / Black /  
(White)



FN2374-100  
White / White /  
(Black)



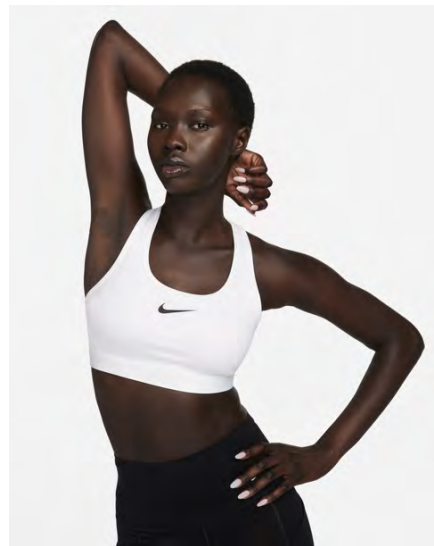
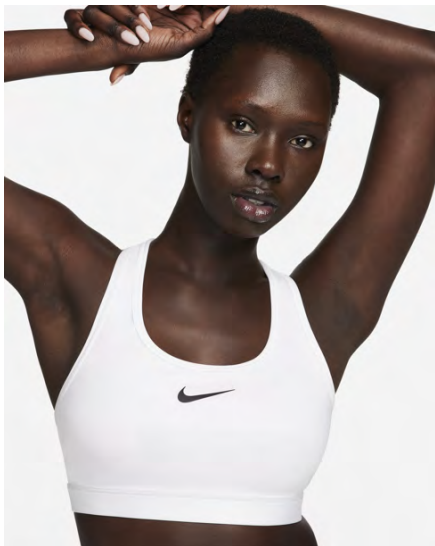
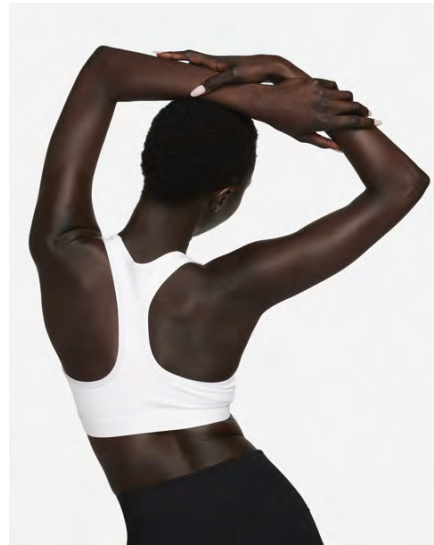
FN2374-410  
Midnight Navy /  
Black / (White)



FN2374-463  
Royal Blue /  
Black / (White)

### Product Features

- Polyester 83% / Elastane 17%
- Nike Dri-FIT technology moves sweat away from your skin for quicker evaporation, helping you stay dry and comfortable
- Women's short inseam is 6in
- An ultrathin liner helps prevent leaks when worn as a backup to your usual protection



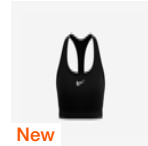
## Carryover Dri-Fit Swoosh Bra Medium Support

### Lifecycle

January 2024 - December 2024

### Available in

2XS - XS - S - M - L - XL - 2XL



New

DX6821-010  
Black / (White)



New

DX6821-100  
White / Stone  
Mauve / (Black)

### Product Features

- 72% Polyester/28% Elastane
- Nike Dri-FIT technology moves sweat away from your skin for quicker evaporation, helping you stay dry and comfortable. It combines with a mesh lining to help keep you cool
- The Swoosh sports bra has long been a partner to your workouts and beyond, but not everyone has the same needs. Looking for minimal coverage and a gentle hold? The Swoosh Light Support is the bra for you. And if you want fuller coverage and more adjustability, the Swoosh High Support is ready to go
- When you're going hard, the bra's lightweight, adaptive fabric feels like a second skin for superior comfort and support. When it's time to rest, it recovers quickly and provides a snug hold and subtle shaping. Super-stretchy fibers make for an easy on/off experience so that you don't have to bend over backward to get out



Carryover

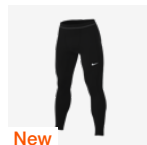
## Men's Dri-Fit Nike Pro Tight

### Lifecycle

January 2024 - December 2024

### Available in

S - M - L - XL - 2XL



New

FB7952-010  
Black / (White)

### Product Features

- 90% Polyester/10% Elastane
- Nike Dri-FIT technology moves sweat away from your skin for quicker evaporation, helping you stay dry and comfortable
- Stretchy knit fabric gives a body-hugging feel so you can move naturally through your workouts and activities
- Soft and stretchy waistband sits snug above your hips
- Side pocket helps store small items, like keys and cards

 Sustainable materials



## Carryover Dri-Fit Alpha Bra High Support

### Lifecycle

January 2022 - December 2024

### Available in

XSA-C - SA-C - MA-B - LA-B - XLA-B -  
1XA-B - 2XA-B - 3XA-B - XSD-E - SC-E  
- MC-E - LC-E - XLC-E - 1XC-E - 2XC-E  
- 3XC-E - XSF-G - SF-G - MF-G - LF-G



New

DD0430-010  
Black / Black /  
Dk Smoke Grey /  
(Dk Smoke Grey)



New

DD0430-100  
White / White /  
Stone Mauve /  
(Black)

### Product Features

- 64% Polyester/36% Elastane
- Adjustable Straps
- Back Closure
- Bonded Seams
- Encapsulation
- Padded - Molded Cup



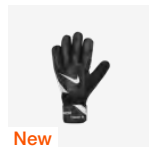
## Carryover Goalkeeper Match Glove

### Lifecycle

January 2024 - October 2024

### Available in

6 - 7 - 8 - 9 - 10 - 11



New

FJ4862-011  
Black / Dark  
Grey / (White)

### Product Features

- 37% latex/33% polyester/21% ethylene vinyl acetate (EVA)/9% nylon
- Hand wash
- Latex foam helps to absorb impact every time you snag the ball, and a
- wide wrist strap helps keep you
- comfortable and secure through each
- match





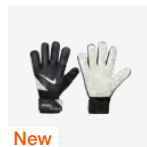
## Carryover Goalkeeper Match Glove

### Lifecycle

January 2024 - October 2024

### Available in

3 - 4 - 5 - 6 - 7 - 8



New

FJ4864-011  
Black / Dark  
Grey / (White)

### Product Features

- Foam on the palm provides soft cushioning
- Smooth palm surface helps give you grip in wet or dry weather
- Mesh on the sides of the fingers helps create breathability
- Reverse stitching on the back of the hand helps create a snug fit



Carryover

## Dri-Fit Park Little Kids Set

### Lifecycle

January 2020 - December 2025

### Available in

XS - S - M - L - XL



CD2244-010  
Black / Black /  
(White)



CD2244-100  
White / White /  
(Black)



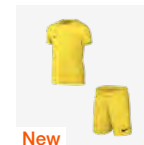
CD2244-302  
Pine Green /  
Pine Green /  
(White)



CD2244-463  
Royal Blue /  
Royal Blue /  
(White)



CD2244-657  
University Red /  
Unvred / (White)



New

CD2244-719  
Tour Yellow /  
Tour Yellow /  
(Black)

### Product Features

- 100% Polyester
- Dri-FIT technology helps keep you dry and comfortable
- Mesh on the back of the jersey creates ventilation
- Stretchy waistband on the shorts is lined with mesh for breathability
- Standard fit for a relaxed, easy feel

# GOAL KEEPERS

JERSEYS	60
FIRST LAYERS	66
PROTECTIVE	70



Carryover

# Dri-Fit Park IV GK Jersey L/S (Youth)



## Lifecycle

January 2020 - December 2027

## Available in

XS - S - M - L - XL



CJ6072-010  
Black / White /  
(White)



CJ6072-052  
Pewter Grey /  
White / (Black)



CJ6072-463  
Royal Blue /  
White / (White)



CJ6072-702  
Volt / White /  
(Black)



CJ6072-819  
Safety Orange /  
White / (Black)

## Product Features

- 100% Polyester
- Mesh across the back helps keep you cool when the game heats up
- Dri-FIT technology helps keep you dry, comfortable and focused
- Mesh across the back provides added breathability
- Slim fit for a tailored feel

Carryover  
**Dri-Fit Park IV GK Jersey L/S**

**Lifecycle**

January 2020 - December 2027

**Available in**

S - M - L - XL - 2XL



CJ6066-010  
 Black / White /  
 (White)



CJ6066-052  
 Pewter Grey /  
 White / (Black)



CJ6066-463  
 Royal Blue /  
 White / (White)



CJ6066-702  
 Volt / White /  
 (Black)

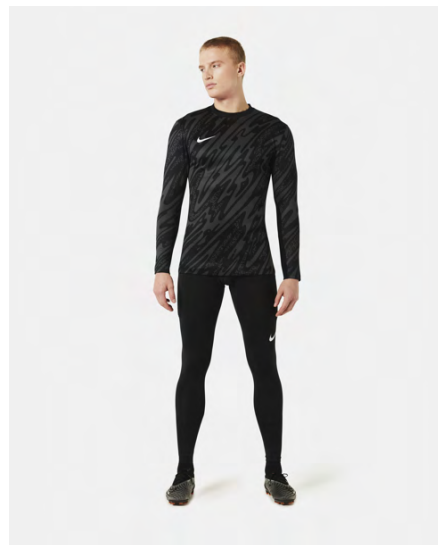
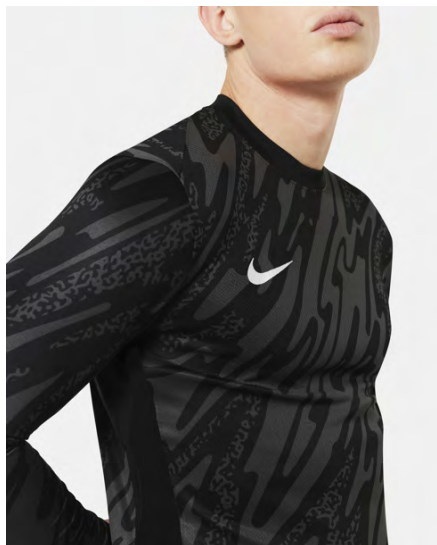


CJ6066-819  
 Safety Orange /  
 White / (Black)

**Product Features**

- 100% Polyester
- Mesh across the back helps keep you cool when the game heats up
- Dri-FIT technology helps keep you dry, comfortable and focused
- Mesh across the back provides added breathability
- Slim fit for a tailored feel

 Sustainable materials



New

## Dri-Fit Gardien V Goalkeeper Jersey L/S

### Lifecycle

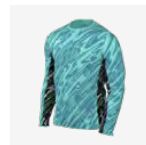
January 2024 - December 2025

### Available in

XS - S - M - L - XL - 2XL - 3XL



FD7474-060  
Anthracite /  
Black / (White)



FD7474-354  
Hyper Turq /  
Teal Nebula /  
(White)



FD7474-644  
Laser Crimson /  
University Red /  
(White)

### Product Features

- 100% polyester
- Nike Dri-FIT technology moves sweat away from your skin for quicker evaporation, helping you stay dry and comfortable
- Slim fit for a tailored look and feel

 Sustainable materials



New

## Dri-Fit Women's Gardien V Goalkeeper Jersey L/S

### Lifecycle

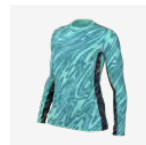
January 2024 - December 2025

### Available in

XS - S - M - L - XL - 2XL



FD7477-060  
Anthracite /  
Black / (White)



FD7477-354  
Hyper Turq /  
Teal Nebula /  
(White)



FD7477-644  
Laser Crimson /  
University Red /  
(White)

### Product Features

- 100% polyester
- Nike Dri-FIT technology moves sweat away from your skin for quicker evaporation, helping you stay dry and comfortable
- New women's fit adds more space to the waist, allowing them to be at their best

 Sustainable materials



New

## Dri-Fit Gardien V Goalkeeper Jersey L/S (Kids)

### Lifecycle

January 2024 - December 2025

### Available in

XS - S - M - L - XL



FD7480-060  
Anthracite /  
Black / (White)



FD7480-354  
Hyper Turq /  
Teal Nebula /  
(White)



FD7480-644  
Laser Crimson /  
University Red /  
(White)

### Product Features

- 100% polyester
- Nike Dri-FIT technology moves sweat away from your skin for quicker evaporation, helping you stay dry and comfortable
- Standard fit for classic feel and comfort



 Sustainable materials



New

## Dri-Fit Gardien V Goalkeeper Jersey S/S

### Lifecycle

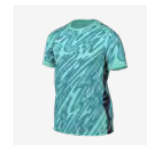
January 2024 - December 2025

### Available in

XS - S - M - L - XL - 2XL - 3XL



FD7482-060  
Anthracite /  
Black / (White)



FD7482-354  
Hyper Turq /  
Teal Nebula /  
(White)



FD7482-644  
Laser Crimson /  
University Red /  
(White)

### Product Features

- 100% polyester
- Nike Dri-FIT technology moves sweat away from your skin for quicker evaporation, helping you stay dry and comfortable
- Slim fit for a tailored look and feel

Carryover  
**Dri-Fit Padded Goalkeeper  
Short (Youth)**

**Lifecycle**

January 2020 - December 2027

**Available in**

XS - S - M - L - XL



CV0057-010  
Black / Black /  
(White)

**Product Features**

- 80% Polyester/20% Spandex
- Articulated padding on the hips provides impact absorption
- Dri-FIT technology helps keep you dry, comfortable and focused

Carryover

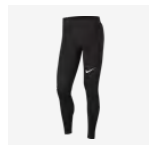
# Dri-Fit Padded Goalkeeper Tight

**Lifecycle**

January 2020 - December 2027

**Available in**

S - M - L - XL - 2XL

CV0045-010  
Black / Black /  
(White)**Product Features**

- 80% Polyester/20% Spandex
- Articulated padding on the hips provides flexible impact absorption
- Dri-FIT technology helps keep you dry, comfortable and focused



Carryover

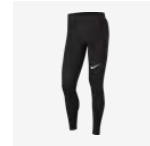
# Dri-Fit Padded Goalkeeper Tight (Youth)

**Lifecycle**

January 2020 - December 2027

**Available in**

XS - S - M - L - XL

CV0050-010  
Black / Black /  
(White)**Product Features**

- 80% Polyester/20% Spandex
- Articulated padding on the hips provides impact absorption
- Dri-FIT technology helps keep you dry, comfortable and focused

Carryover  
**Dri-Fit Padded Goalkeeper  
 Short**

**Lifecycle**

January 2020 - December 2027

**Available in**

S - M - L - XL - 2XL



CV0053-010  
 Black / Black /  
 (White)

**Product Features**

- 80% Polyester/20% Spandex
- Articulated padding on the hips provides flexible impact absorption
- Dri-FIT technology helps keep you dry, comfortable and focused





Carryover

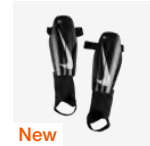
## Charge Shinguard Unisex

### Lifecycle

January 2024 - December 2024

### Available in

S - M - L - XL



New

DX4608-010  
Black / Black /  
(White)

### Product Features

- 43% polypropylene (PP)/33% ethylene vinyl acetate (EVA)/17% polyester/7% rubber
- Nike Charge Soccer Shin Guards Safety shouldn't get in the way of playing your best game. With a hard shell that creates low-profile coverage, these shin guards also have a foam back for comfort, allowing you to kick and pass in comfort
- Hand wash



## Carryover Guard Stay

### Lifecycle

January 2024 - December 2024

### Available in

1SIZE



New

SE0047-001  
Black / White



New

SE0047-101  
White / Black

### Product Features

- ENTIRE: 43% POLYESTER, 30% NYLON, 27% RUBBER
- Soft elastic stretches for a supportive feel
- Hook-and-loop closure lets you easily take the sleeves on and off
- Designed to be worn at or below the shin guard for a secure fit



Carryover

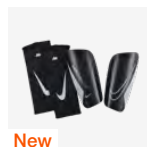
## Mercurial Lite Shinguard

### Lifecycle

January 2024 - December 2024

### Available in

XS - S - M - L - XL



New

DN3611-010  
Black / Black /  
(White)



New

DN3611-100  
White / White /  
(Black)

### Product Features

- Shell (rigid shell of guard): 72% K RESIN, 28% EVA; Sleeve: 65% POLYESTER, 19% RUBBER, 16% SPANDEX
- Low-profile shell is lightweight and durable
- Soft, perforated foam helps cushion against impact
- Stretchy sleeves help hold the guards in place and use Dri-FIT technology to wick sweat away





Carryover  
**Charge Shinguard (Youth)**

**Lifecycle**

January 2024 - December 2024

**Available in**

S - M - L



New

DX4610-010  
Black / Black /  
(White)

**Product Features**

- 43% polypropylene (PP)/33% ethylene vinyl acetate (EVA)/17% polyester/7% rubber
- Hand wash
- Imported
- This design features a hard shell for low-profile coverage and a foam back for comfort



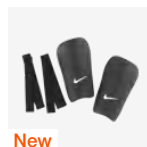
Carryover  
**Nike J Shin Guard**

**Lifecycle**

January 2024 - December 2024

**Available in**

XS - S - M - L



New

SP2162-010  
Black / (White)



New

SP2162-100  
White / (Black)


**Product Features**

- Shell (rigid shell of guard): 87% POLYETHYLENE, 13% EVA; Strap: 56% POLYESTER, 38% RUBBER, 6% NYLON
- Contoured shell is lightweight and durable
- Dense foam helps cushion against impact
- Stretchy straps help keep your shin guards in place

# TRAINING



TOPS & T-SHIRTS	76
PANTS & SHORTS	106
POLOS	135
TRAINING BIBS	143
GLOVES	144
HATS	145
JACKETS	147
OUTERWEAR	161

 Sustainable materials



# Carryover Dri-Fit Women's Dri-Fit Park SS Top

## Lifecycle

January 2024 - December 2025

## Available in

XS - S - M - L - XL



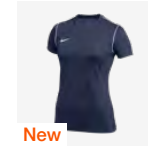
New

BV6897-010  
Black / White /  
(White)



New

BV6897-100  
White / Black /  
(Black)



New

BV6897-410  
Obsidian / White  
/ (White)



New

BV6897-463  
Royal Blue /  
White / (White)




New

BV6897-657  
University Red /  
White / (White)

## Product Features

- 100% Polyester
- Dri-FIT technology helps you stay dry, comfortable and focused
- Shoulder piping inspires a classic football look

 Sustainable materials



## Carryover Dri-Fit Park 20 Top

### Lifecycle

January 2020 - December 2025

### Available in

S - M - L - XL - 2XL



BV6883-010  
Black / White /  
(White)



BV6883-100  
White / Black /  
(Black)



BV6883-302  
Pine Green /  
White / (White)



BV6883-410  
Obsidian / White  
/ (White)



BV6883-463  
Royal Blue /  
White / (White)




BV6883-657  
University Red /  
White / (White)



BV6883-719  
Tour Yellow /  
Black / (Black)

### Product Features

- This product is made with 100% recycled polyester fibers
- Dri-FIT technology helps you stay dry, comfortable and focused
- Slim fit for a tailored feel
- Shoulder piping inspires a classic football look

 Sustainable materials



Carryover  
**Dri-Fit Park 20 Top (Youth)**

**Lifecycle**

January 2020 - December 2025

**Available in**

XS - S - M - L - XL



BV6905-010  
 Black / White /  
 (White)



BV6905-100  
 White / Black /  
 (Black)



BV6905-302  
 Pine Green /  
 White / (White)



BV6905-451  
 Obsidian / White  
 / (White)



BV6905-463  
 Royal Blue /  
 White / (White)



BV6905-657  
 University Red /  
 White / (White)



BV6905-719  
 Tour Yellow /  
 Black / (Black)

**Product Features**

- This product is made with 100% recycled polyester fibers
- Dri-FIT technology helps you stay dry, comfortable and focused
- Slim fit for a tailored feel
- Shoulder piping inspires a classic football look

 Sustainable materials



## Carryover Dri-Fit Academy 23 Drill Top

### Lifecycle

January 2023 - December 2024

### Available in

XS - S - M - L - XL - 2XL - 3XL



DR1352-010  
Black / White /  
(White)



DR1352-012  
Wolf Grey /  
Black / (White)



DR1352-100  
White / Black /  
(Black)



DR1352-329  
Green Spark /  
Lucky Green /  
(White)



DR1352-451  
Obsidian / Royal  
Blue / (White)



DR1352-452  
Obsidian / Volt /  
(White)



DR1352-463  
Royal Blue /  
Obsidian /  
(White)




DR1352-657  
University Red /  
Gym Red /  
(White)



DR1352-719  
Tour Yellow /  
University Gold /  
(Black)

### Product Features

- 100% Polyester
- Nike Dri-FIT technology moves sweat away from your skin for quicker evaporation, helping you stay dry and comfortable
- Sweat-wicking fabric combined with mesh insets to help keep you dry and comfortable during your pre-match or training routine
- Mesh at sleeves and sides lets air flow to help keep you cool
- Thumb straps at the cuffs help hold the sleeves in place while you move
- 1/4-zip design with mock neck
- Embroidered Swoosh design

 Sustainable materials



# Carryover Dri-Fit Academy 23 Sleeveless Top

## Lifecycle

April 2023 - December 2025

**Futures only**

## Available in

XS - S - M - L - XL - 2XL - 3XL



DR1331-010  
Black / White /  
(White)



DR1331-012  
Wolf Grey /  
Black / (White)



DR1331-100  
White / Black /  
(Black)



DR1331-329  
Green Spark /  
Lucky Green /  
(White)



DR1331-451  
Obsidian / Royal  
Blue / (White)



DR1331-452  
Obsidian / Volt /  
(White)



DR1331-463  
Royal Blue /  
Obsidian /  
(White)



DR1331-657  
University Red /  
Gym Red /  
(White)



DR1331-719  
Tour Yellow /  
University Gold /  
(Black)

## Product Features

- 100% Polyester
- Nike Dri-FIT technology moves sweat away from your skin for quicker evaporation, helping you stay dry and comfortable
- Sweat-wicking fabric to help keep you cool during your pre-match or training routine
- Mesh on the back and sides lets air flow to help keep you cool
- Embroidered Swoosh design
- Machine wash



 Sustainable materials



## Carryover Dri-Fit Academy 23 Top

### Lifecycle

January 2023 - December 2024

### Available in

XS - S - M - L - XL - 2XL - 3XL



DR1336-010  
Black / White /  
(White)



DR1336-012  
Wolf Grey /  
Black / (White)



DR1336-100  
White / Black /  
(Black)



DR1336-329  
Green Spark /  
Lucky Green /  
(White)



DR1336-451  
Obsidian / Royal  
Blue / (White)



DR1336-452  
Obsidian / Volt /  
(White)



DR1336-463  
Royal Blue /  
Obsidian /  
(White)




DR1336-657  
University Red /  
Gym Red /  
(White)

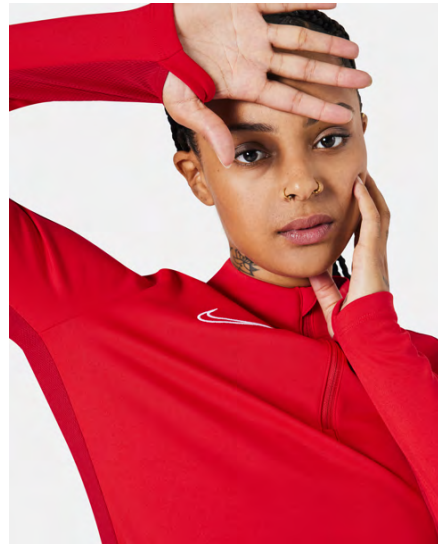


DR1336-719  
Tour Yellow /  
University Gold /  
(Black)

### Product Features

- 100% Polyester
- Nike Dri-FIT technology moves sweat away from your skin for quicker evaporation, helping you stay dry and comfortable
- Sweat-wicking technology helps keep you cool during your pre-match or training routine
- Mesh on the back and sides lets air flow to help keep you cool
- Embroidered Swoosh design
- Machine wash

 Sustainable materials



# Carryover Dri-Fit Women's Academy 23 Drill Top

## Lifecycle

January 2023 - December 2024

## Available in

XS - S - M - L - XL - 2XL



DR1354-010  
Black / White /  
(White)



DR1354-012  
Wolf Grey /  
Black / (White)



DR1354-100  
White / Black /  
(Black)



DR1354-329  
Green Spark /  
Lucky Green /  
(White)



DR1354-451  
Obsidian / Royal  
Blue / (White)



DR1354-452  
Obsidian / Volt /  
(White)



DR1354-463  
Royal Blue /  
Obsidian /  
(White)



DR1354-657  
University Red /  
Gym Red /  
(White)



DR1354-719  
Tour Yellow /  
University Gold /  
(Black)

## Product Features

- 100% Polyester
- Nike Dri-FIT technology moves sweat away from your skin for quicker evaporation, helping you stay dry and comfortable
- Sweat-wicking fabric combined with mesh insets to help keep you dry and comfortable during your pre-match or training routine
- Mesh at sleeves and sides lets air flow to help keep you cool
- Thumb straps at the cuffs help hold the sleeves in place while you move
- 1/4-zip design with mock neck
- Embroidered Swoosh design
- Machine wash

 Sustainable materials



# Carryover Dri-Fit Women's Academy 23 Sleeveless Top

## Lifecycle

April 2023 - December 2025

Futures only

## Available in

XS - S - M - L - XL - 2XL



DR1332-010  
Black / White /  
(White)



DR1332-012  
Wolf Grey /  
Black / (White)



DR1332-100  
White / Black /  
(Black)



DR1332-329  
Green Spark /  
Lucky Green /  
(White)



DR1332-451  
Obsidian / Royal  
Blue / (White)



DR1332-452  
Obsidian / Volt /  
(White)



DR1332-463  
Royal Blue /  
Obsidian /  
(White)



DR1332-657  
University Red /  
Gym Red /  
(White)



DR1332-719  
Tour Yellow /  
University Gold /  
(Black)

## Product Features

- 100% Polyester
- Nike Dri-FIT technology moves sweat away from your skin for quicker evaporation, helping you stay dry and comfortable
- Sweat-wicking fabric to help keep you cool during your pre-match or training routine
- Mesh on the back and sides lets air flow to help keep you cool
- Embroidered Swoosh design
- Machine wash

 Sustainable materials



# Carryover Dri-Fit Women's Academy 23 Top

## Lifecycle

January 2023 - December 2024

## Available in

XS - S - M - L - XL - 2XL



DR1338-010  
Black / White /  
(White)



DR1338-012  
Wolf Grey /  
Black / (White)



DR1338-100  
White / Black /  
(Black)



DR1338-329  
Green Spark /  
Lucky Green /  
(White)



DR1338-451  
Obsidian / Royal  
Blue / (White)



DR1338-452  
Obsidian / Volt /  
(White)



DR1338-463  
Royal Blue /  
Obsidian /  
(White)



DR1338-657  
University Red /  
Gym Red /  
(White)

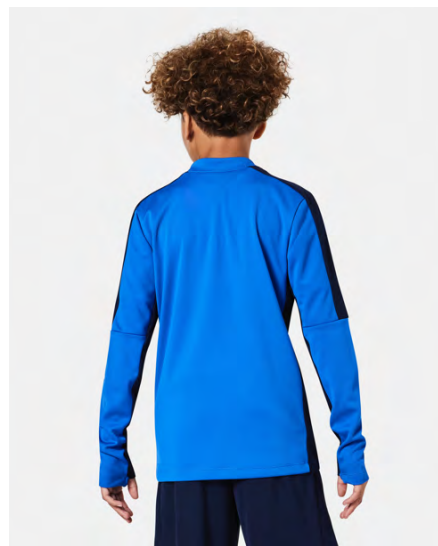


DR1338-719  
Tour Yellow /  
University Gold /  
(Black)

## Product Features

- 100% Polyester
- Nike Dri-FIT technology moves sweat away from your skin for quicker evaporation, helping you stay dry and comfortable
- Sweat-wicking technology helps keep you cool during your pre-match or training routine
- Mesh on the back and sides lets air flow to help keep you cool
- Embroidered Swoosh design
- Machine wash

 Sustainable materials



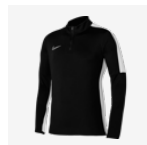
# Carryover Dri-Fit Academy 23 Drill Top (Youth)

## Lifecycle

January 2023 - December 2024

## Available in

XS - S - M - L - XL



DR1356-010  
Black / White /  
(White)



DR1356-012  
Wolf Grey /  
Black / (White)



DR1356-100  
White / Black /  
(Black)



DR1356-329  
Green Spark /  
Lucky Green /  
(White)



DR1356-451  
Obsidian / Royal  
Blue / (White)



DR1356-452  
Obsidian / Volt /  
(White)



DR1356-463  
Royal Blue /  
Obsidian /  
(White)



DR1356-657  
University Red /  
Gym Red /  
(White)

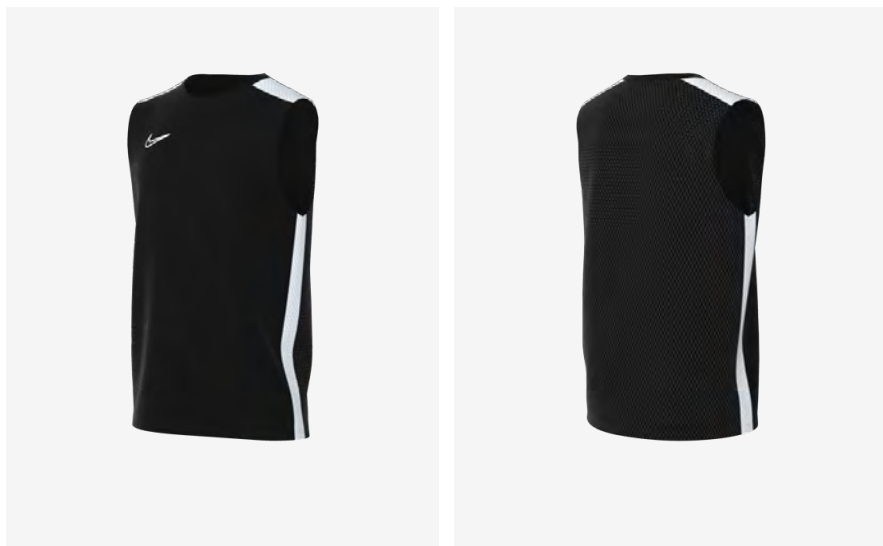


DR1356-719  
Tour Yellow /  
University Gold /  
(Black)

## Product Features

- 100% Polyester
- Nike Dri-FIT technology moves sweat away from your skin for quicker evaporation, helping you stay dry and comfortable
- Sweat-wicking fabric combined with mesh insets to help keep you dry and comfortable during your pre-match or training routine
- Mesh at sleeves and sides lets air flow to help keep you cool
- Thumb straps at the cuffs help hold the sleeves in place while you move
- 1/4-zip design with mock neck
- Embroidered Swoosh design

 Sustainable materials



# Carryover Dri-Fit Academy 23 Sleeveless Top (Youth)

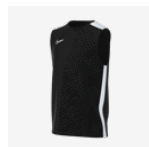
## Lifecycle

April 2023 - December 2025

**Futures only**

## Available in

XS - S - M - L - XL



DR1335-010  
Black / White /  
(White)



DR1335-012  
Wolf Grey /  
Black / (White)



DR1335-100  
White / Black /  
(Black)



DR1335-329  
Green Spark /  
Lucky Green /  
(White)



DR1335-451  
Obsidian / Royal  
Blue / (White)



DR1335-452  
Obsidian / Volt /  
(White)



DR1335-463  
Royal Blue /  
Obsidian /  
(White)



DR1335-657  
University Red /  
Gym Red /  
(White)



DR1335-719  
Tour Yellow /  
University Gold /  
(Black)

## Product Features

- 100% Polyester
- Nike Dri-FIT technology moves sweat away from your skin for quicker evaporation, helping you stay dry and comfortable
- Sweat-wicking fabric to help keep you cool during your pre-match or training routine
- Mesh on the back and sides lets air flow to help keep you cool
- Embroidered Swoosh design
- Machine wash

 Sustainable materials



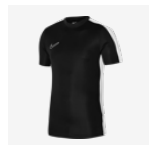
## Carryover Dri-Fit Academy 23 Top (Youth)

### Lifecycle

January 2023 - December 2024

### Available in

XS - S - M - L - XL



DR1343-010  
Black / White /  
(White)



DR1343-012  
Wolf Grey /  
Black / (White)



DR1343-100  
White / Black /  
(Black)



DR1343-329  
Green Spark /  
Lucky Green /  
(White)



DR1343-451  
Obsidian / Royal  
Blue / (White)



DR1343-452  
Obsidian / Volt /  
(White)



DR1343-463  
Royal Blue /  
Obsidian /  
(White)



DR1343-657  
University Red /  
Gym Red /  
(White)

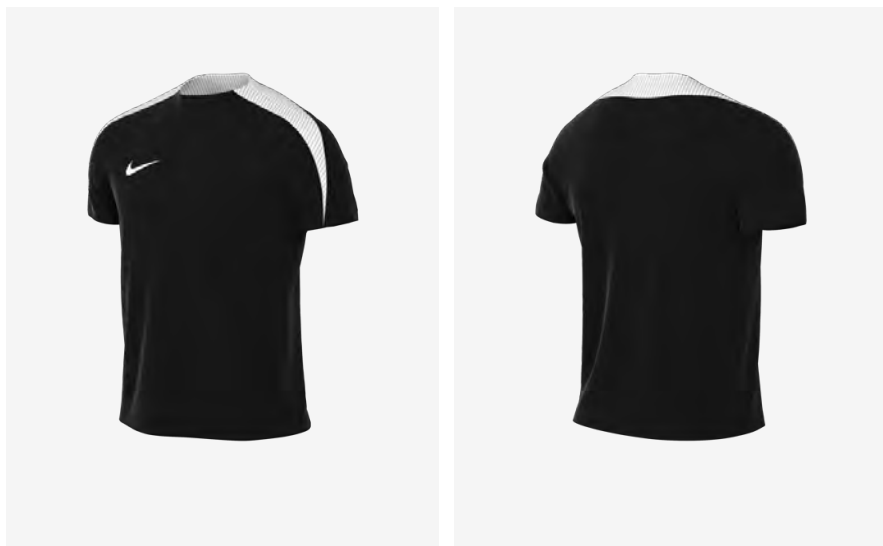


DR1343-719  
Tour Yellow /  
University Gold /  
(Black)

### Product Features

- 100% Polyester
- Nike Dri-FIT technology moves sweat away from your skin for quicker evaporation, helping you stay dry and comfortable
- Sweat-wicking technology helps keep you cool during your pre-match or training routine
- Mesh on the back and sides lets air flow to help keep you cool
- Embroidered Swoosh design
- Machine wash

 Sustainable materials



New

# Dri-Fit Strike 24 Training Top

## Lifecycle

January 2024 - December 2025

Futures only

## Available in

XS - S - M - L - XL - 2XL - 3XL



FD7487-010  
Black / White /  
Black / (White)



FD7487-458  
Obsidian / White  
/ Obsidian /  
(White)



FD7487-465  
Royal Blue /  
White / Royal  
Blue / (White)



FD7487-657  
University Red /  
Black /  
University Red /  
(White)

## Product Features

- 100% polyester
- Nike Dri-FIT technology moves sweat away from your skin for quicker evaporation, helping you stay dry and comfortable
- Standard fit for classic feel and comfort



 Sustainable materials



New

# Dri-Fit Women's Strike 24 Training Top

## Lifecycle

January 2024 - December 2025

Futures only

## Available in

XS - S - M - L - XL - 2XL



FD7490-010  
Black / White /  
Black / (White)



FD7490-458  
Obsidian / White  
/ Obsidian /  
(White)



FD7490-465  
Royal Blue /  
White / Royal  
Blue / (White)



FD7490-657  
University Red /  
Black /  
University Red /  
(White)

## Product Features

- 100% polyester
- Nike Dri-FIT technology moves sweat away from your skin for quicker evaporation, helping you stay dry and comfortable
- Standard fit for classic feel and comfort

 Sustainable materials



**New**  
**Dri-Fit Strike 24 Training Top**  
**(Kids)**

**Lifecycle**

January 2024 - December 2025

**Futures only**

**Available in**

XS - S - M - L - XL



FD7493-010  
 Black / White /  
 Black / (White)



FD7493-458  
 Obsidian / White  
 / Obsidian /  
 (White)



FD7493-465  
 Royal Blue /  
 White / Royal  
 Blue / (White)



FD7493-657  
 University Red /  
 Black /  
 University Red /  
 (White)

**Product Features**

- 100% polyester
- Nike Dri-FIT technology moves sweat away from your skin for quicker evaporation, helping you stay dry and comfortable
- Standard fit for classic feel and comfort

 Sustainable materials



New

# Dri-Fit Women's Strike 24 Knit Crew Top

## Lifecycle

January 2024 - December 2025

Futures only

## Available in

XS - S - M - L - XL - 2XL



FD7567-010  
Black / White /  
Black / (White)



FD7567-458  
Obsidian / White  
/ Obsidian /  
(White)



FD7567-465  
Royal Blue /  
White / Royal  
Blue / (White)

## Product Features

- Polyester 91% / Spandex 9%
- This garment is made with 92% recycled materials
- A thumb loop at the end of the sleeve opening gives the athlete the option to loop over their thumb, for a locked in, secure feeling
- Endure on the body and sleeves is a Dri-Fit circular knit fabric, wicking sweat away from the body, with elastane content to enable stretch for range of motion. A zipper from the neck opening along the shoulder seam keeps the front neck clear of distraction, but still allows for on and off ease

 Sustainable materials



**New**  
**Dri-Fit Strike 24 Drill Top**

**Lifecycle**

January 2024 - December 2025

**Futures only**

**Available in**

XS - S - M - L - XL - 2XL - 3XL



FD7569-010  
 Black / Black /  
 White / (White)



FD7569-455  
 Obsidian /  
 Obsidian / White  
 / (White)




FD7569-467  
 Royal Blue /  
 Royal Blue /  
 White / (White)



FD7569-657  
 University Red /  
 University Red /  
 Black / (White)

**Product Features**

- Polyester 91% / Spandex 9%
- Nike Dri-FIT technology moves sweat away from your skin for quicker evaporation, helping you stay dry and comfortable
- Slim fit for a tailored feel
- Thumb loop at the end of sleeve opening

 Sustainable materials



New

# Storm-Fit Strike 24 Drill Top (Kids)

## Lifecycle

January 2024 - December 2025

Futures only

## Available in

XS - S - M - L - XL



FD7573-010  
Black / Black /  
White / (White)



FD7573-455  
Obsidian /  
Obsidian / White  
/ (White)



FD7573-467  
Royal Blue /  
Royal Blue /  
White / (White)

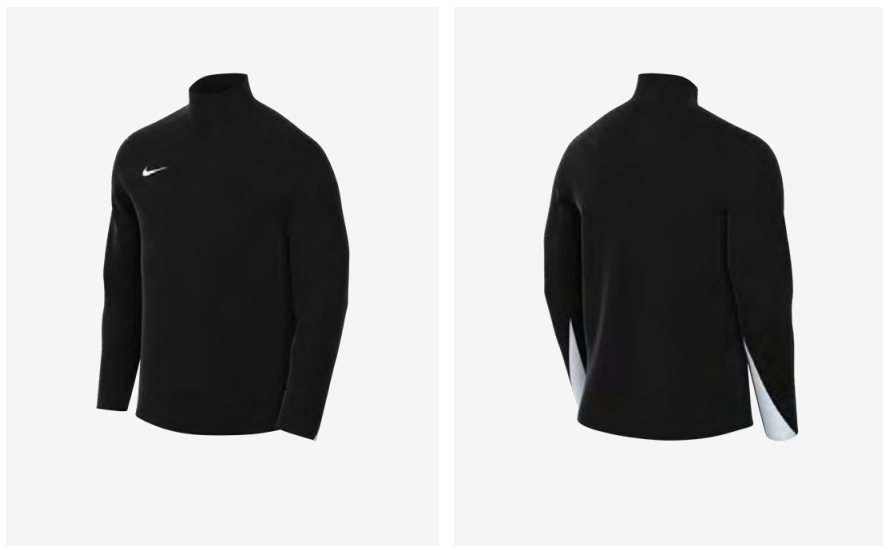


FD7573-657  
University Red /  
University Red /  
Black / (White)

## Product Features

- Polyester 91% / Spandex 9%
- Nike Dri-FIT technology moves sweat away from your skin for quicker evaporation, helping you stay dry and comfortable
- Slim fit for a tailored feel
- Thumb loop at the end of sleeve opening

 Sustainable materials



New

## Dri-Fit Strike 24 Drill Top

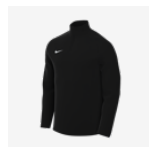
### Lifecycle

January 2024 - December 2025

Futures only

### Available in

XS - S - M - L - XL - 2XL - 3XL



FD7587-010  
Black / Black /  
White / (White)



FD7587-455  
Obsidian /  
Obsidian / White  
/ (White)




FD7587-467  
Royal Blue /  
Royal Blue /  
White / (White)

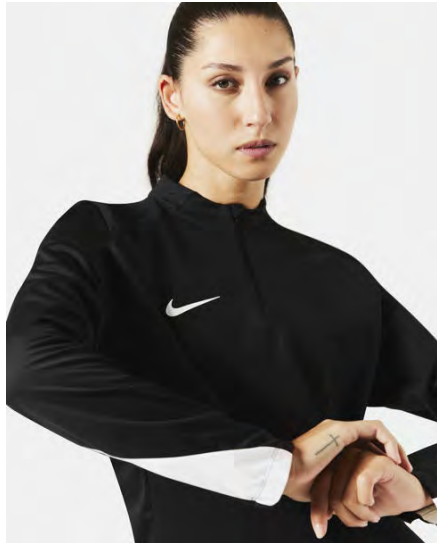


FD7587-657  
University Red /  
University Red /  
Black / (White)

### Product Features

- 100% polyester
- Endure on the body and sleeves is a Dri-Fit circular knit fabric, wicking sweat away from the body, with elastane content to enable stretch for range of motion
- This garment is made with 92% recycled materials
- A thumb loop at the end of the sleeve opening gives the athlete the option to loop over their thumb, for a locked in, secure feeling

 Sustainable materials



**New**  
**Dri-Fit Women's Strike 24 Drill  
 Top**

**Lifecycle**

January 2024 - December 2025

**Futures only**

**Available in**

XS - S - M - L - XL - 2XL



FD7589-010  
 Black / Black /  
 White / (White)



FD7589-455  
 Obsidian /  
 Obsidian / White  
 / (White)

**Product Features**

- 100% polyester
- This garment is made with 92% recycled materials
- A thumb loop at the end of the sleeve opening gives the athlete the option to loop over their thumb, for a locked in, secure feeling
- Endure on the body and sleeves is a Dri-Fit circular knit fabric, wicking sweat away from the body, with elastane content to enable stretch for range of motion

 Sustainable materials



New

## Dri-Fit Strike 24 Drill Top (Kids)

### Lifecycle

January 2024 - December 2025

Futures only

### Available in

XS - S - M - L - XL



FD7591-657  
University Red /  
University Red /  
Black / (White)

### Product Features

- 100% polyester
- Endure on the body and sleeves is a Dri-Fit circular knit fabric, wicking sweat away from the body, with elastane content to enable stretch for range of motion
- This garment is made with 92% recycled materials
- A thumb loop at the end of the sleeve opening gives the athlete the option to loop over their thumb, for a locked in, secure feeling



 Sustainable materials



New

# Dri-Fit Academy Pro 24 Training Top

## Lifecycle

January 2024 - December 2025

Futures only

## Available in

XS - S - M - L - XL - 2XL - 3XL



FD7592-010  
Black / White /  
Black / (White)



FD7592-329  
Green Spark /  
White / Green  
Spark / (White)



FD7592-458  
Obsidian / White  
/ Obsidian /  
(White)




FD7592-465  
Royal Blue /  
White / Royal  
Blue / (White)



FD7592-657  
University Red /  
Black /  
University Red /  
(White)

## Product Features

- 100% polyester
- Nike Dri-FIT technology moves sweat away from your skin for quicker evaporation, helping you stay dry and comfortable
- Slim fit for a tailored look and feel

 Sustainable materials



New

# Dri-Fit Women's Academy Pro 24 Training Top

## Lifecycle

January 2024 - December 2025

Futures only

## Available in

XS - S - M - L - XL - 2XL



FD7594-010  
Black / White /  
Black / (White)



FD7594-458  
Obsidian / White  
/ Obsidian /  
(White)



FD7594-465  
Royal Blue /  
White / Royal  
Blue / (White)



FD7594-657  
University Red /  
Black /  
University Red /  
(White)

## Product Features

- 100% polyester
- Nike Dri-FIT technology moves sweat away from your skin for quicker evaporation, helping you stay dry and comfortable
- New women's fit adds more space to the waist, allowing them to be at their best

 Sustainable materials



New

# Therma-Fit Academy Pro 24 Training Top (Kids)

## Lifecycle

January 2024 - December 2025

Futures only

## Available in

XS - S - M - L - XL



FD7597-010  
Black / White /  
Black / (White)



FD7597-329  
Green Spark /  
White / Green  
Spark / (White)



FD7597-458  
Obsidian / White  
/ Obsidian /  
(White)




FD7597-465  
Royal Blue /  
White / Royal  
Blue / (White)

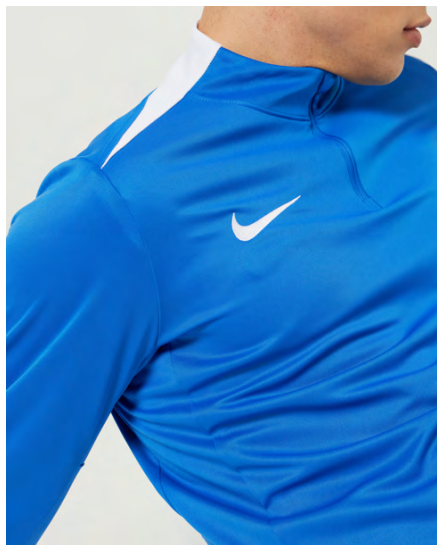


FD7597-657  
University Red /  
Black /  
University Red /  
(White)

## Product Features

- 100% polyester
- Nike Dri-FIT technology moves sweat away from your skin for quicker evaporation, helping you stay dry and comfortable
- Standard fit for classic feel and comfort

 Sustainable materials



New

# Dri-Fit Academy Pro 24 Drill Top

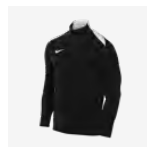
## Lifecycle

January 2024 - December 2025

Futures only

## Available in

XS - S - M - L - XL - 2XL - 3XL



FD7667-010  
Black / Black /  
White / (White)



FD7667-329  
Green Spark /  
Green Spark /  
White / (White)



FD7667-455  
Obsidian /  
Obsidian / White  
/ (White)



FD7667-467  
Royal Blue /  
Royal Blue /  
White / (White)

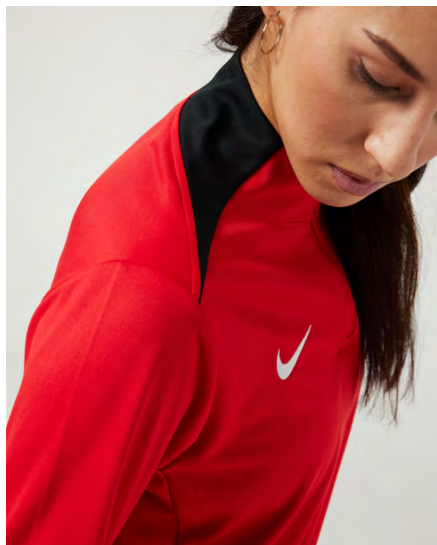
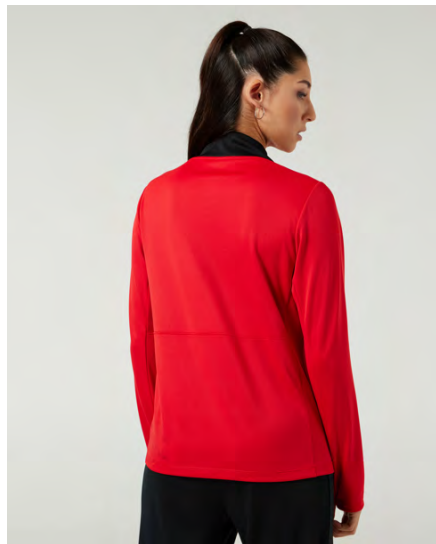


FD7667-657  
University Red /  
University Red /  
Black / (White)

## Product Features

- 100% polyester
- Nike Dri-FIT technology moves sweat away from your skin for quicker evaporation, helping you stay dry and comfortable
- Standard fit for classic feel and comfort
- Thumb loop at the end of sleeve opening

 Sustainable materials



New

# Dri-Fit Women's Academy Pro 24 Drill Top

## Lifecycle

January 2024 - December 2025

Futures only

## Available in

XS - S - M - L - XL - 2XL



FD7669-010  
Black / Black /  
White / (White)



FD7669-455  
Obsidian /  
Obsidian / White  
/ (White)




FD7669-467  
Royal Blue /  
Royal Blue /  
White / (White)



FD7669-657  
University Red /  
University Red /  
Black / (White)

## Product Features

- 100% polyester
- Nike Dri-FIT technology moves sweat away from your skin for quicker evaporation, helping you stay dry and comfortable
- Standard fit for classic feel and comfort
- Thumb loop at the end of sleeve opening

 Sustainable materials



New

# Dri-Fit Academy Pro 24 Drill Top (Kids)

## Lifecycle

January 2024 - December 2025

Futures only

## Available in

XS - S - M - L - XL



FD7671-329  
Green Spark /  
Green Spark /  
White / (White)



FD7671-455  
Obsidian /  
Obsidian / White  
/ (White)



FD7671-467  
Royal Blue /  
Royal Blue /  
White / (White)

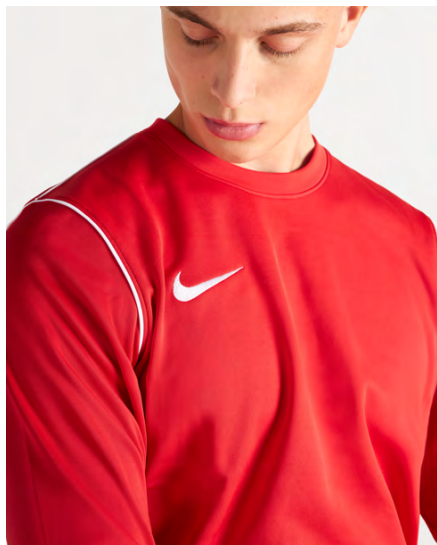


FD7671-657  
University Red /  
University Red /  
Black / (White)

## Product Features

- 100% polyester
- Nike Dri-FIT technology moves sweat away from your skin for quicker evaporation, helping you stay dry and comfortable
- Standard fit for classic feel and comfort
- Thumb loop at the end of sleeve opening

 Sustainable materials



New

## Dri-Fit Park 20 Crew Top

### Lifecycle

January 2020 - December 2025

### Available in

S - M - L - XL - 2XL



FJ3004-010  
Black / White /  
(White)



FJ3004-100  
White / Black /  
(Black)



FJ3004-302  
Pine Green /  
White / (White)



FJ3004-451  
Obsidian / White  
/ (White)



FJ3004-463  
Royal Blue /  
White / (White)



FJ3004-657  
University Red /  
White / (White)



FJ3004-719  
Tour Yellow /  
Black / (Black)

### Product Features

- 100% Polyester
- Dri-FIT technology helps you stay dry, comfortable and focused
- Standard fit for a relaxed, easy feel
- Shoulder piping inspires a classic football look

 Sustainable materials



New

# Dri-Fit Women's Park 20 Crew Top

## Lifecycle

January 2020 - December 2025

## Available in

XS - S - M - L - XL



FJ3006-010  
Black / White /  
(White)



FJ3006-100  
White / Black /  
(Black)



FJ3006-451  
Obsidian / White  
/ (White)



FJ3006-463  
Royal Blue /  
White / (White)



FJ3006-657  
University Red /  
White / (White)

## Product Features

- 100% polyester
- Nike Dri-FIT technology moves sweat from your skin for quicker evaporation—helping you stay dry and comfortable



 Sustainable materials



New

## Dri-Fit Park 20 Crew (Kids)

### Lifecycle

January 2020 - December 2025

### Available in

XS - S - M - L - XL



FJ3008-010  
Black / White /  
(White)



FJ3008-100  
White / Black /  
(Black)



FJ3008-302  
Pine Green /  
White / (White)



FJ3008-451  
Obsidian / White  
/ (White)



FJ3008-463  
Royal Blue /  
White / (White)



FJ3008-657  
University Red /  
White / (White)



FJ3008-719  
Tour Yellow /  
Black / (Black)

### Product Features

- 100% Polyester
- Dri-FIT technology helps you stay dry, comfortable and focused
- Standard fit for a relaxed, easy feel
- Shoulder piping inspires a classic football look

 Sustainable materials



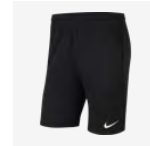
## Carryover Dri-Fit Park 20 Knit Short

### Lifecycle

January 2020 - December 2025

### Available in

S - M - L - XL - 2XL



CW6152-010  
Black / Black /  
(White)



CW6152-451  
Obsidian /  
Obsidian /  
(White)

### Product Features

- This product is made with 100% recycled polyester fibers
- Dri-FIT technology helps keep you dry and comfortable
- Zippered side pockets let you secure your essentials
- Elastic waistband stretches for a secure fit
- Standard fit for a relaxed, easy feel

Carryover  
**Dri-Fit Park 20 Knit Pant**

**Lifecycle**

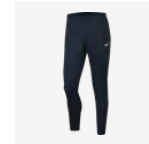
January 2020 - December 2025

**Available in**

S - M - L - XL - 2XL



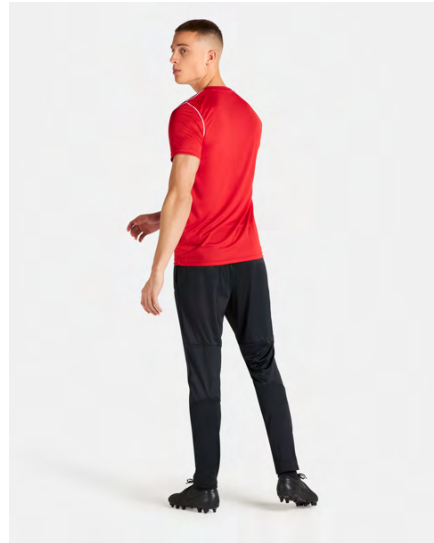
BV6877-010  
 Black / Black /  
 (White)



BV6877-410  
 Obsidian /  
 Obsidian /  
 (White)

**Product Features**

- 100% Polyester
- Dri-FIT technology helps keep you dry and comfortable
- Panels on the calves make it easy to change with boots
- Side pockets hold your belongings
- Standard fit for a relaxed, easy feel
- Elastic waistband and drawcord



 Sustainable materials



## Carryover Dri-Fit Park 20 Knit Short (Youth)

### Lifecycle

January 2020 - December 2025

### Available in

XS - S - M - L - XL



DB8244-010  
Black / Black /  
(White)

DB8244-451  
Obsidian /  
Obsidian /  
(White)

### Product Features

- This product is made with 100% recycled polyester fibers
- Dri-FIT technology helps keep you dry and comfortable
- Zippered side pockets let you secure your essentials
- Elastic waistband stretches for a secure fit
- Standard fit for a relaxed, easy feel

 Sustainable materials



Carryover  
**Dri-Fit Women's Park 20 Knit Short**

**Lifecycle**

January 2020 - December 2025

**Available in**

XS - S - M - L - XL



CW6154-010  
 Black / Black /  
 (White)

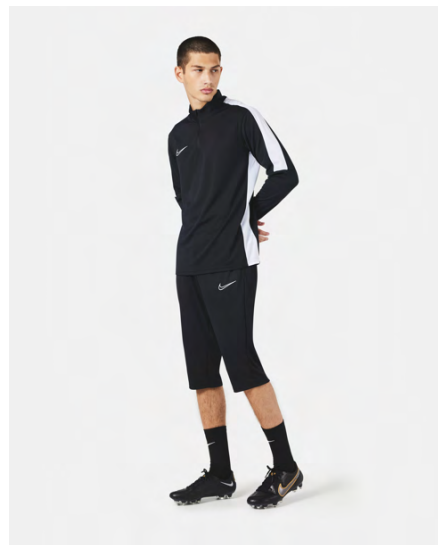


CW6154-451  
 Obsidian /  
 Obsidian /  
 (White)

**Product Features**

- This product is made with 100% recycled polyester fibers
- Dri-FIT technology helps keep you dry and comfortable
- Elastic waistband and hidden drawcord give you a secure fit
- Zippered pockets secure your everyday essentials
- Standard fit for a relaxed, easy feel

 Sustainable materials



## Carryover Academy 23 3/4 Knit Pant

### Lifecycle

January 2023 - December 2024

### Available in

XS - S - M - L - XL - 2XL - 3XL



DR1365-010  
Black / Black /  
(White)



DR1365-451  
Obsidian /  
Obsidian /  
(White)

### Product Features

- 100% Polyester
- Nike Dri-FIT technology moves sweat away from your skin for quicker evaporation, helping you stay dry and comfortable
- Sweat-wicking fabric to help keep you cool during your pre-match or training routine
- Mesh side panels let air flow to help keep you cool
- Elastic waistband with drawcord
- Zippered side pockets
- Embroidered Swoosh design
- Machine wash

 Sustainable materials



## Carryover Dri-Fit Academy 23 Knit Pant

### Lifecycle

January 2023 - December 2024

### Available in

XS - S - M - L - XL - 2XL - 3XL



DR1666-010  
Black / Black /  
(White)



DR1666-451  
Obsidian /  
Obsidian /  
(White)

### Product Features

- 100% Polyester
- Nike Dri-FIT technology moves sweat away from your skin for quicker evaporation, helping you stay dry and comfortable
- Sweat-wicking fabric combined with mesh side stripes to help keep you dry and cool during your pre-match or training routine
- Mesh side panels let air flow to help keep you cool
- Zippers on the lower legs make it easy to change over cleats or shoes
- Elastic waistband with drawcord
- Zippered side pockets
- Embroidered Swoosh design
- Machine wash

 Sustainable materials



## Carryover Dri-Fit Academy 23 Knit Short

### Lifecycle

January 2023 - December 2024

### Available in

XS - S - M - L - XL - 2XL - 3XL



DR1360-010  
Black / Black /  
(White)




DR1360-451  
Obsidian /  
Obsidian /  
(White)

### Product Features

- 100% Polyester
- Nike Dri-FIT technology moves sweat away from your skin for quicker evaporation, helping you stay dry and comfortable
- Sweat-wicking fabric combined with mesh side stripes to help keep you dry and cool during your pre-match or training routine
- Mesh on the sides lets air flow to help keep you cool
- Elastic waistband with drawcord
- Embroidered Swoosh design
- Machine wash



 Sustainable materials



## Carryover Dri-Fit Academy 23 Woven Track Pant

### Lifecycle

January 2023 - December 2024

### Available in

XS - S - M - L - XL - 2XL - 3XL



DR1725-010  
Black / Black /  
(White)

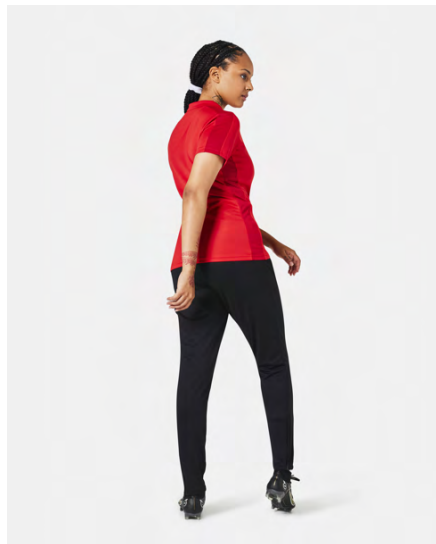


DR1725-451  
Obsidian /  
Obsidian /  
(White)

### Product Features

- 100% Polyester
- Nike Dri-FIT technology moves sweat away from your skin for quicker evaporation, helping you stay dry and comfortable
- Sweat-wicking fabric to help keep you dry and comfortable during your pre-match or training routine
- Mesh lining and side panels add breathability
- Elastic waistband with drawcord
- Zippered front pockets
- Elastic cuffs
- Embroidered Swoosh design
- Machine wash

 Sustainable materials



## Carryover Dri-Fit Women's Academy 23 Knit Pant

### Lifecycle

January 2023 - December 2024

### Available in

XS - S - M - L - XL - 2XL



DR1671-010  
Black / Black /  
(White)



DR1671-451  
Obsidian /  
Obsidian /  
(White)

### Product Features

- 100% Polyester
- Nike Dri-FIT technology moves sweat away from your skin for quicker evaporation, helping you stay dry and comfortable
- Sweat-wicking fabric combined with mesh side stripes to help keep you dry and cool during your pre-match or training routine
- Mesh side panels let air flow to help keep you cool
- Zippers on the lower legs make it easy to change over cleats or shoes
- Zippered side pockets
- Elastic waistband with drawcord
- Embroidered Swoosh design

 Sustainable materials



## Carryover Dri-Fit Women's Academy 23 Knit Short

### Lifecycle

January 2023 - December 2024

### Available in

XS - S - M - L - XL - 2XL




DR1362-010  
Black / Black /  
(White)



DR1362-451  
Obsidian /  
Obsidian /  
(White)

### Product Features

- 100% Polyester
- Nike Dri-FIT technology moves sweat away from your skin for quicker evaporation, helping you stay dry and comfortable
- Sweat-wicking fabric combined with mesh side stripes to help keep you dry and cool during your pre-match or training routine
- Mesh on the sides lets air flow to help keep you cool
- Elastic waistband with drawcord
- Embroidered Swoosh design
- Machine wash

 Sustainable materials



## Carryover Dri-Fit Academy 23 3/4 Knit Pant (Youth)

### Lifecycle

January 2023 - December 2024

### Available in

XS - S - M - L - XL




DR1369-010  
Black / Black /  
(White)



DR1369-451  
Obsidian /  
Obsidian /  
(White)

### Product Features

- 100% Polyester
- Nike Dri-FIT technology moves sweat away from your skin for quicker evaporation, helping you stay dry and comfortable
- Sweat-wicking fabric to help keep you cool during your pre-match or training routine
- Mesh side panels let air flow to help keep you cool
- Elastic waistband with drawcord
- Zippered side pockets
- Embroidered Swoosh design
- Machine wash

 Sustainable materials



## Carryover Dri-Fit Academy 23 Knit Pant (Youth)

### Lifecycle

January 2023 - December 2024

### Available in

XS - S - M - L - XL



DR1676-010  
Black / Black /  
(White)



DR1676-451  
Obsidian /  
Obsidian /  
(White)

### Product Features

- 100% Polyester
- Nike Dri-FIT technology moves sweat away from your skin for quicker evaporation, helping you stay dry and comfortable
- Sweat-wicking fabric combined with mesh side stripes to help keep you dry and cool during your pre-match or training routine
- Mesh side panels let air flow to help keep you cool
- Zippers on the lower legs make it easy to change over cleats or shoes
- Elastic waistband with drawcord
- Zippered side pockets
- Embroidered Swoosh design
- Machine wash

 Sustainable materials



## Carryover Dri-Fit Academy 23 Knit Short (Youth)

### Lifecycle

January 2023 - December 2024

### Available in

XS - S - M - L - XL




DR1364-010  
Black / Black /  
(White)



DR1364-451  
Obsidian /  
Obsidian /  
(White)

### Product Features

- 100% Polyester
- Nike Dri-FIT technology moves sweat away from your skin for quicker evaporation, helping you stay dry and comfortable
- Sweat-wicking fabric combined with mesh side stripes to help keep you dry and cool during your pre-match or training routine
- Mesh on the sides lets air flow to help keep you cool
- Elastic waistband with drawcord
- Embroidered Swoosh design
- Machine wash

 Sustainable materials



# Carryover Dri-Fit Academy 23 Woven Track Pant (Youth)

## Lifecycle

January 2023 - December 2024

## Available in

XS - S - M - L - XL



DR1734-010  
Black / Black /  
(White)



DR1734-451  
Obsidian /  
Obsidian /  
(White)

## Product Features

- 100% Polyester
- Nike Dri-FIT technology moves sweat away from your skin for quicker evaporation, helping you stay dry and comfortable
- Sweat-wicking fabric to help keep you dry and comfortable during your pre-match or training routine
- Mesh lining and side panels add breathability
- Elastic waistband with drawcord
- Zippered front pockets
- Elastic cuffs
- Embroidered Swoosh design
- Machine wash

 Sustainable materials



New

## Dri-Fit Strike 24 Knit Short

### Lifecycle

January 2024 - December 2025

Futures only

### Available in

XS - S - M - L - XL - 2XL - 3XL



FD7535-010  
Black / (White)



FD7535-451  
Obsidian /  
(White)

### Product Features

- 100% polyester
- Nike Dri-FIT technology moves sweat away from your skin for quicker evaporation, helping you stay dry and comfortable
- Standard fit for classic feel and comfort
- Men's inseam is 21cm
- Zippered pockets for secure storage



 Sustainable materials



New

## Dri-Fit Women's Strike 24 Knit Short

### Lifecycle

January 2024 - December 2025

Futures only

### Available in

XS-T - S-T - M-T - L-T - XL-T - 2XL-T




FD7537-010  
Black / (White)



FD7537-451  
Obsidian /  
(White)

### Product Features

- 100% polyester
- Nike Dri-FIT technology moves sweat away from your skin for quicker evaporation, helping you stay dry and comfortable
- Standard fit for classic feel and comfort
- Women's inseam is 15cm
- Zippered pockets for secure storage

 Sustainable materials



New

## Dri-Fit Strike 24 Knit Short (Kids)

### Lifecycle

January 2024 - December 2025

Futures only

### Available in

XS - S - M - L - XL




FD7541-010  
Black / (White)



FD7541-451  
Obsidian /  
(White)

### Product Features

- 100% polyester
- Nike Dri-FIT technology moves sweat from your skin for quicker evaporation—helping you stay dry and comfortable

 Sustainable materials



New

## Dri-Fit Strike 24 Knit Pant

### Lifecycle

January 2024 - December 2025

Futures only

### Available in

XS - S - M - L - XL - 2XL - 3XL



FD7574-010  
Black / (White)



FD7574-451  
Obsidian /  
(White)

### Product Features

- Polyester 91% / Spandex 9%
- Nike Dri-FIT technology moves sweat away from your skin for quicker evaporation, helping you stay dry and comfortable
- Slim fit for a tailored look and feel
- Zippered pockets for secure storage
- Lower ankle zipper allows for easy removal over cleats

 Sustainable materials



New

# Dri-Fit Women's Strike 24 Knit Pant

## Lifecycle

January 2024 - December 2025

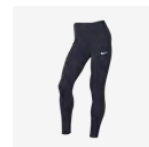
Futures only

## Available in

XS - S - M - L - XL - 2XL




FD7576-010  
Black / (White)



FD7576-451  
Obsidian / (White)

## Product Features

- Polyester 91% / Elastane 9%
- Nike Dri-FIT technology moves sweat away from your skin for quicker evaporation, helping you stay dry and comfortable
- Standard fit for classic feel and comfort
- Zippered pockets for secure storage
- Lower ankle zipper allows for easy removal over cleats

 Sustainable materials



New

## Dri-Fit Strike 24 Knit Pant (Kids)

### Lifecycle

January 2024 - December 2025

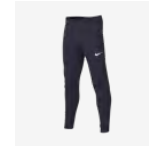
Futures only

### Available in

XS - S - M - L - XL




FD7578-010  
Black / (White)



FD7578-451  
Obsidian /  
(White)

### Product Features

- Polyester 91% / Spandex 9%
- Nike Dri-FIT technology moves sweat away from your skin for quicker evaporation, helping you stay dry and comfortable
- Slim fit for a tailored look and feel
- Zippered pockets for secure storage
- Lower ankle zipper allows for easy removal over cleats

 Sustainable materials



New

# Dri-Fit Academy Pro 24 Knit Short

## Lifecycle

January 2024 - December 2025

Futures only

## Available in

XS - S - M - L - XL - 2XL - 3XL



FD7605-010  
Black / (White)



FD7605-451  
Obsidian / (White)

## Product Features

- 100% polyester
- Dri-FIT technology helps you stay dry, comfortable & focused

 Sustainable materials



New

## Dri-Fit Women's Academy Pro 24 Knit Short

### Lifecycle

January 2024 - December 2025

Futures only

### Available in

XS-T - S-T - M-T - L-T - XL-T - 2XL-T



FD7608-010  
Black / (White)



FD7608-451  
Obsidian /  
(White)

### Product Features

- 100% polyester
- Nike Dri-FIT technology moves sweat away from your skin for quicker evaporation, helping you stay dry and comfortable
- Standard fit for classic feel and comfort
- Women's inseam is 10.5cm
- Zippered pockets for secure storage

 Sustainable materials



New

## Dri-Fit Academy Pro 24 Knit Short (Kids)

### Lifecycle

January 2024 - December 2025

Futures only

### Available in

XS - S - M - L - XL



FD7610-010  
Black / (White)



FD7610-451  
Obsidian /  
(White)

### Product Features

- 100% polyester
- Nike Dri-FIT technology moves sweat away from your skin for quicker evaporation, helping you stay dry and comfortable
- Standard fit for classic feel and comfort
- Youth inseam grades by size from 17.7cm for a Medium



 Sustainable materials



New

# Academy Pro 24 Knit Pant

## Lifecycle

January 2024 - December 2025

Futures only

## Available in

XS - S - M - L - XL - 2XL - 3XL




FD7672-010  
Black / (White)



FD7672-451  
Obsidian /  
(White)

## Product Features

- 100% polyester
- Nike Dri-FIT technology moves sweat away from your skin for quicker evaporation, helping you stay dry and comfortable
- Slim fit for tailored look and feel
- Zippered pockets for secure storage
- Lower ankle zipper allows for easy removal over cleats

 Sustainable materials



New

# Therma-Fit Women's Academy Pro 24 Knit Pant

## Lifecycle

January 2024 - December 2025

Futures only

## Available in

XS - S - M - L - XL - 2XL




FD7677-010  
Black / (White)



FD7677-451  
Obsidian /  
(White)

## Product Features

- 100% polyester
- Nike Dri-FIT technology moves sweat away from your skin for quicker evaporation, helping you stay dry and comfortable
- Standard fit for classic feel and comfort
- Zippered pockets for secure storage
- Lower ankle zipper allows for easy removal over cleats

 Sustainable materials



New

## Dri-Fit Academy Pro 24 Knit Pant (Kids)

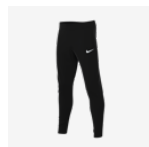
### Lifecycle

January 2024 - December 2025

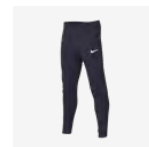
Futures only

### Available in

XS - S - M - L - XL




FD7679-010  
Black / (White)



FD7679-451  
Obsidian /  
(White)

### Product Features

- 100% polyester
- Nike Dri-FIT technology moves sweat away from your skin for quicker evaporation, helping you stay dry and comfortable
- Slim fit for tailored look and feel
- Zippered pockets for secure storage
- Lower ankle zipper allows for easy removal over cleats

 Sustainable materials



New

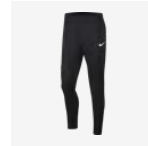
## Dri-Fit Park 20 Knit Pant

### Lifecycle

January 2020 - December 2025

### Available in

S - M - L - XL - 2XL



FJ3017-010  
Black / Black /  
(White)



FJ3017-451  
Obsidian /  
Obsidian /  
(White)

### Product Features

- 100% Polyester
- Dri-FIT technology helps keep you dry and comfortable
- Panels on the calves make it easy to change with boots
- Side pockets hold your belongings
- Standard fit for a relaxed, easy feel
- Elastic waistband and drawcord

 Sustainable materials



New

## Dri-Fit Women's Park 20 Knit Pant

### Lifecycle

January 2020 - December 2025

### Available in

XS - S - M - L - XL




FJ3019-010  
Black / Black /  
(White)



FJ3019-451  
Obsidian /  
Obsidian /  
(White)

### Product Features

- 100% Polyester
- Dri-FIT technology helps keep you dry and comfortable
- Panels on the calves make it easy to change with boots
- Side pockets hold your belongings
- Standard fit for a relaxed, easy feel
- Elastic waistband and drawcord

 Sustainable materials



New

## Dri-Fit Park 20 Knit Pant (Kids)

### Lifecycle

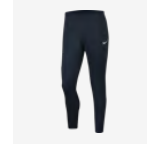
January 2020 - December 2025

### Available in

XS - S - M - L - XL




FJ3021-010  
Black / Black /  
(White)



FJ3021-451  
Obsidian /  
Obsidian /  
(White)

### Product Features

- 100% Polyester
- Dri-FIT technology helps keep you dry and comfortable
- Panels on the calves make it easy to change with boots
- Side pockets hold your belongings
- Standard fit for a relaxed, easy feel
- Elastic waistband and drawcord

 Sustainable materials



Carryover  
**Dri-Fit Park 20 Polo**

**Lifecycle**

January 2020 - December 2025

**Available in**

S - M - L - XL - 2XL



BV6879-010  
 Black / White /  
 (White)



BV6879-100  
 White / Black /  
 (Black)



BV6879-302  
 Pine Green /  
 White / (White)



BV6879-410  
 Obsidian / White  
 / (White)



BV6879-463  
 Royal Blue /  
 White / (White)



BV6879-657  
 University Red /  
 White / (White)



BV6879-719  
 Tour Yellow /  
 Black / (Black)

**Product Features**

- This product is made with 100% recycled polyester fibers
- Dri-FIT technology helps keep you dry and comfortable
- Standard fit for a relaxed, easy feel
- Fold-over collar with a two-button placket delivers timeless style
- Shoulder piping inspires a classic football look

 Sustainable materials



Carryover  
**Dri-Fit Park 20 Polo (Youth)**

**Lifecycle**

January 2020 - December 2025

**Available in**

XS - S - M - L - XL



BV6903-010  
 Black / White /  
 (White)



BV6903-100  
 White / Black /  
 (Black)



BV6903-302  
 Pine Green /  
 White / (White)



BV6903-451  
 Obsidian / White  
 / (White)



BV6903-463  
 Royal Blue /  
 White / (White)



BV6903-657  
 University Red /  
 White / (White)



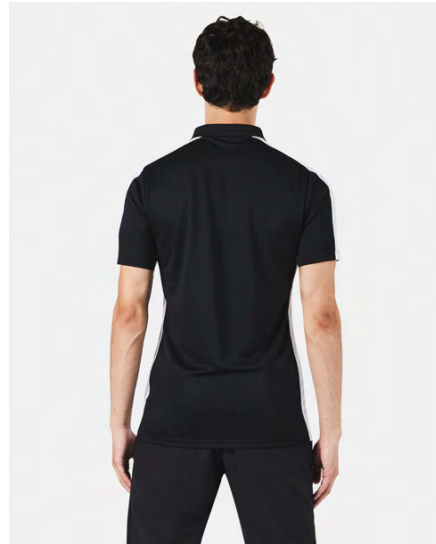
BV6903-719  
 Tour Yellow /  
 Black / (Black)

**Product Features**

- This product is made with 100% recycled polyester fibers
- Dri-FIT technology helps keep you dry and comfortable
- Standard fit for a relaxed, easy feel
- Fold-over collar with a two-button placket delivers timeless style
- Shoulder piping inspires a classic football look



 Sustainable materials



## Carryover Dri-Fit Academy 23 Polo

### Lifecycle

January 2023 - December 2024

### Available in

XS - S - M - L - XL - 2XL - 3XL



DR1346-010  
Black / White /  
(White)



DR1346-012  
Wolf Grey /  
Black / (White)



DR1346-100  
White / Black /  
(Black)



DR1346-329  
Green Spark /  
Lucky Green /  
(White)



DR1346-451  
Obsidian / Royal  
Blue / (White)



DR1346-452  
Obsidian / Volt /  
(White)



DR1346-463  
Royal Blue /  
Obsidian /  
(White)



DR1346-657  
University Red /  
Gym Red /  
(White)

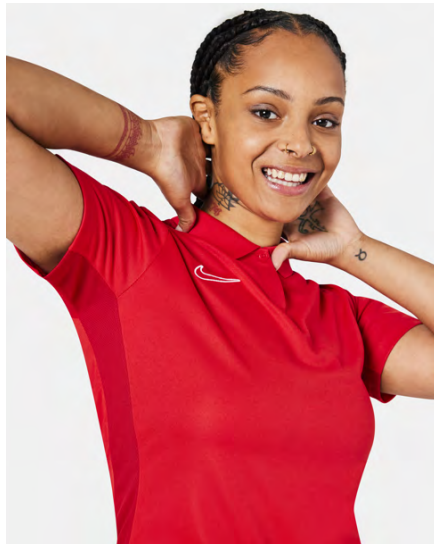


DR1346-719  
Tour Yellow /  
University Gold /  
(Black)

### Product Features

- 100% Polyester
- Nike Dri-FIT technology moves sweat away from your skin for quicker evaporation, helping you stay dry and comfortable
- Sweat-wicking fabric to help keep you cool during your pre-match or training routine
- Mesh on the sleeve and side lets air flow to help keep you cool
- Fold-over collar with button placket
- Embroidered Swoosh design
- Machine wash

 Sustainable materials



# Carryover Dri-Fit Women's Academy 23 Polo

## Lifecycle

January 2023 - December 2024

## Available in

XS - S - M - L - XL - 2XL



DR1348-010  
Black / White /  
(White)



DR1348-012  
Wolf Grey /  
Black / (White)



DR1348-100  
White / Black /  
(Black)



DR1348-329  
Green Spark /  
Lucky Green /  
(White)



DR1348-451  
Obsidian / Royal  
Blue / (White)



DR1348-452  
Obsidian / Volt /  
(White)



DR1348-463  
Royal Blue /  
Obsidian /  
(White)



DR1348-657  
University Red /  
Gym Red /  
(White)



DR1348-719  
Tour Yellow /  
University Gold /  
(Black)

## Product Features

- 100% Polyester
- Nike Dri-FIT technology moves sweat away from your skin for quicker evaporation, helping you stay dry and comfortable
- Sweat-wicking fabric to help keep you cool during your pre-match or training routine
- Mesh on the sleeve and side lets air flow to help keep you cool
- Fold-over collar with button placket
- Embroidered Swoosh design
- Machine wash

 Sustainable materials



## Carryover Dri-Fit Academy 23 Polo (Youth)

### Lifecycle

January 2023 - December 2024

### Available in

XS - S - M - L - XL



DR1350-010  
Black / White /  
(White)



DR1350-012  
Wolf Grey /  
Black / (White)



DR1350-100  
White / Black /  
(Black)



DR1350-329  
Green Spark /  
Lucky Green /  
(White)



DR1350-451  
Obsidian / Royal  
Blue / (White)



DR1350-452  
Obsidian / Volt /  
(White)



DR1350-463  
Royal Blue /  
Obsidian /  
(White)




DR1350-657  
University Red /  
Gym Red /  
(White)



DR1350-719  
Tour Yellow /  
University Gold /  
(Black)

### Product Features

- 100% Polyester
- Nike Dri-FIT technology moves sweat away from your skin for quicker evaporation, helping you stay dry and comfortable
- Sweat-wicking fabric to help keep you cool during your pre-match or training routine
- Mesh on the sleeve and side lets air flow to help keep you cool
- Fold-over collar with button placket
- Embroidered Swoosh design
- Machine wash

 Sustainable materials



New

# Dri-Fit Academy Pro 24 Polo

## Lifecycle

January 2024 - December 2025

Futures only

## Available in

XS - S - M - L - XL - 2XL - 3XL



FD7600-010  
Black / Black /  
White / (White)



FD7600-329  
Green Spark /  
Green Spark /  
White / (White)



FD7600-455  
Obsidian /  
Obsidian / White  
/ (White)




FD7600-467  
Royal Blue /  
Royal Blue /  
White / (White)



FD7600-657  
University Red /  
University Red /  
Black / (White)

## Product Features

- 100% polyester
- Nike Dri-FIT technology moves sweat from your skin for quicker
- evaporation—helping you stay dry and comfortable

 Sustainable materials



New

# Dri-Fit Academy Pro 24 Polo (Kids)

## Lifecycle

January 2024 - December 2025

Futures only

## Available in

XS - S - M - L - XL



FD7604-010  
Black / Black /  
White / (White)



FD7604-329  
Green Spark /  
Green Spark /  
White / (White)



FD7604-455  
Obsidian /  
Obsidian / White  
/ (White)



FD7604-467  
Royal Blue /  
Royal Blue /  
White / (White)

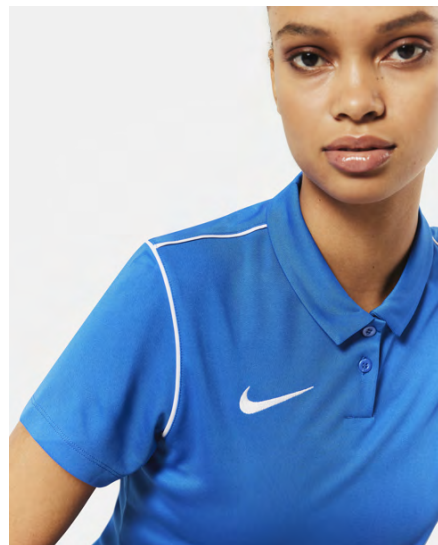
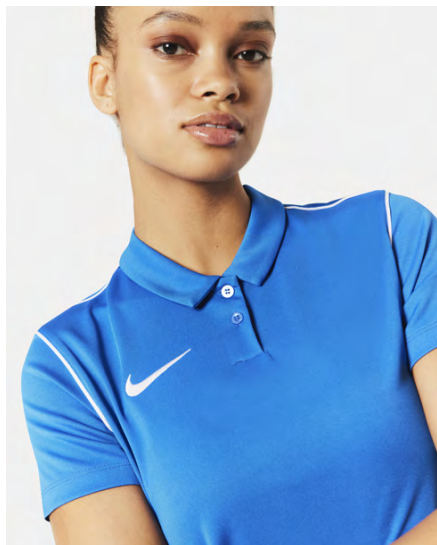


FD7604-657  
University Red /  
University Red /  
Black / (White)

## Product Features

- 100% polyester
- Nike Dri-FIT technology moves sweat from your skin for quicker
- evaporation—helping you stay dry and comfortable

 Sustainable materials



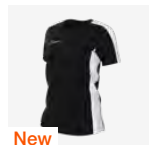
# Carryover Dri-Fit Women's Dri-Fit Park Polo

## Lifecycle

January 2024 - December 2025

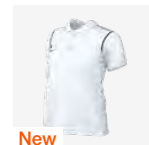
## Available in

XS - S - M - L - XL



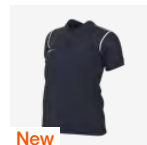
New

BV6893-010  
Black / White /  
(White)



New

BV6893-100  
White / Black /  
(Black)



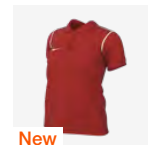
New

BV6893-410  
Obsidian / White  
/ (White)



New

BV6893-463  
Royal Blue /  
White / (White)



New

BV6893-657  
University Red /  
White / (White)

## Product Features

- 100% Polyester
- Dri-FIT technology helps keep you dry and comfortable
- Fold-over collar with a two-button placket delivers timeless style
- Shoulder piping inspires a classic football look

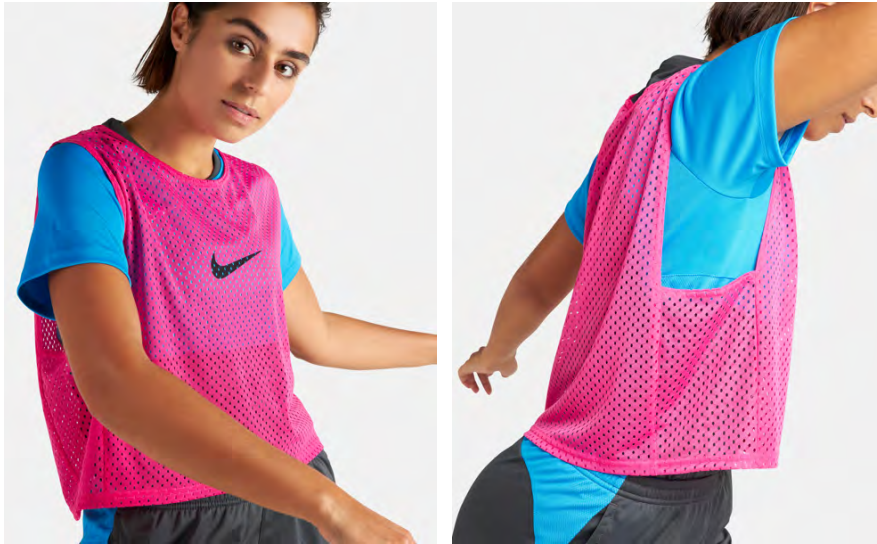
## Carryover Training Bib

### Lifecycle

January 2021 - December 2025

### Available in

S - L - 2XL



DV7425-100  
White / (Black)



DV7425-313  
Action Green /  
(Black)



DV7425-406  
Photo Blue /  
(Black)



DV7425-616  
Vivid Pink /  
(Black)



DV7425-702  
Volt / (Black)



### Product Features

- This product is made with 100% recycled polyester fibers
- Dri-FIT technology helps keep you dry and comfortable
- Mesh fabric feels lightweight and breathable
- Standard fit for a relaxed, easy feel
- 1 unit

Carryover

# Academy Gloves Therma-FIT (Youth)

**Lifecycle**

October 2022 - October 2024


**Available in**

S - M - L

DQ6066-010  
Black / Black /  
(White)**Product Features**

- 62% polyester/28% nylon/5% rubber/5% spandex
- Made with durable material that helps keep the cold out so you can stay focused on your game
- Nike Therma-FIT technology helps manage your body's natural heat to help keep you warm in cold-weather conditions
- Silicone on fingers and palms helps you grip the ball
- Flexible cuffs stretch for a secure fit
- Hand wash



 Sustainable materials



Carryover  
**Dri-Fit Peak Beanie**

**Lifecycle**

January 2024 - December 2025

**Available in**

ONE SIZE



New

FQ8292-010  
 Black / (White)



New

FQ8292-060  
 Anthracite /  
 (White)



New

FQ8292-451  
 Obsidian /  
 (White)

**Product Features**

- 80% Polyester/20% Elastane
- Soft knit yarns feel stretchy, plush and warm
- Cuffed design provides versatility and lets you wear it how you like



Carryover

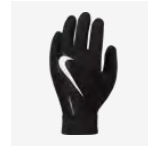
## Academy Gloves Therma-FIT

### Lifecycle

October 2022 - October 2024

### Available in


S - M - L - XL



DQ6071-010  
Black / Black /  
(White)

### Product Features

- 62% polyester/28% nylon/5% rubber/5% spandex
- Made with durable material that helps keep the cold out so you can stay focused on your game
- Nike Therma-FIT technology helps manage your body's natural heat to help keep you warm in cold-weather conditions
- Silicone on fingers and palms helps you grip the ball
- Flexible cuffs stretch for a secure fit
- Hand wash

 Sustainable materials



# Carryover Dri-Fit Academy 23 Knit Track Jacket

## Lifecycle

January 2023 - December 2024

## Available in

XS - S - M - L - XL - 2XL - 3XL



DR1681-010  
Black / White /  
(White)



DR1681-012  
Wolf Grey /  
Black / (White)



DR1681-100  
White / Black /  
(Black)



DR1681-329  
Green Spark /  
Lucky Green /  
(White)



DR1681-451  
Obsidian / Royal  
Blue / (White)



DR1681-452  
Obsidian / Volt /  
(White)



DR1681-463  
Royal Blue /  
Obsidian /  
(White)



DR1681-657  
University Red /  
Gym Red /  
(White)



DR1681-719  
Tour Yellow /  
University Gold /  
(Black)

## Product Features

- Body/panels/pocket bags: 100% Polyester Rib: 97% Polyester/3% Spandex
- Nike Dri-FIT technology moves sweat away from your skin for quicker evaporation, helping you stay dry and comfortable
- Sweat-wicking fabric combined with mesh insets to help keep you dry and comfortable during your pre-match or training routine
- Mesh at the shoulders, sleeves and sides adds breathability
- Ribbed cuffs and hem help hold the jacket in place while you move
- Zippered front pockets
- Full-zip design
- Embroidered Swoosh logo
- Machine wash

 Sustainable materials



# Carryover Dri-Fit Academy 23 Woven Track Jacket

## Lifecycle

January 2023 - December 2024

## Available in

XS - S - M - L - XL - 2XL - 3XL



DR1710-010  
Black / White /  
(White)



DR1710-012  
Wolf Grey /  
Black / (White)



DR1710-100  
White / Black /  
(Black)



DR1710-329  
Green Spark /  
Lucky Green /  
(White)



DR1710-451  
Obsidian / Royal  
Blue / (White)



DR1710-452  
Obsidian / Volt /  
(White)



DR1710-463  
Royal Blue /  
Obsidian /  
(White)




DR1710-657  
University Red /  
Gym Red /  
(White)



DR1710-719  
Tour Yellow /  
University Gold /  
(Black)

## Product Features

- Body/panels/pocket bags: 100% Polyester Rib: 97% Polyester/3% Spandex
- Nike Dri-FIT technology moves sweat away from your skin for quicker evaporation, helping you stay dry and comfortable
- Sweat-wicking fabric combined with mesh insets to help keep you dry and comfortable during your pre-match or training routine
- Mesh lining and exterior panels at sleeves and sides add breathability
- Elastic cuffs help hold the sleeves in place while you move
- Front pockets
- Full-zip design
- Embroidered Swoosh logo
- Machine wash

 Sustainable materials

# Carryover Dri-Fit Women's Academy 23 Knit Track Jacket



## Lifecycle

January 2023 - December 2024

## Available in

XS - S - M - L - XL - 2XL



DR1686-010  
Black / White /  
(White)



DR1686-012  
Wolf Grey /  
Black / (White)



DR1686-100  
White / Black /  
(Black)



DR1686-329  
Green Spark /  
Lucky Green /  
(White)



DR1686-451  
Obsidian / Royal  
Blue / (White)



DR1686-463  
Royal Blue /  
Obsidian /  
(White)



DR1686-657  
University Red /  
Gym Red /  
(White)



DR1686-719  
Tour Yellow /  
University Gold /  
(Black)

## Product Features

- Body/panels/pocket bags: 100% Polyester Rib: 97% Polyester/3% Spandex
- Nike Dri-FIT technology moves sweat away from your skin for quicker evaporation, helping you stay dry and comfortable
- Sweat-wicking fabric combined with mesh insets to help keep you dry and comfortable during your pre-match or training routine
- Mesh at the shoulders, sleeves and sides adds breathability
- Ribbed cuffs and hem help hold the jacket in place while you move
- Zippered front pockets
- Full-zip design
- Embroidered Swoosh logo
- Machine wash

 Sustainable materials



# Carryover Dri-Fit Academy 23 Knit Track Jacket (Youth)

## Lifecycle

January 2023 - December 2024

## Available in

XS - S - M - L - XL



DR1695-010  
Black / White /  
(White)



DR1695-012  
Wolf Grey /  
Black / (White)



DR1695-100  
White / Black /  
(Black)



DR1695-329  
Green Spark /  
Lucky Green /  
(White)



DR1695-451  
Obsidian / Royal  
Blue / (White)



DR1695-452  
Obsidian / Volt /  
(White)



DR1695-463  
Royal Blue /  
Obsidian /  
(White)




DR1695-657  
University Red /  
Gym Red /  
(White)



DR1695-719  
Tour Yellow /  
University Gold /  
(Black)

## Product Features

- Body/panels/pocket bags: 100% Polyester Rib: 97% Polyester/3% Spandex
- Nike Dri-FIT technology moves sweat away from your skin for quicker evaporation, helping you stay dry and comfortable
- Sweat-wicking fabric combined with mesh insets to help keep you dry and comfortable during your pre-match or training routine
- Mesh at the shoulders, sleeves and sides adds breathability
- Ribbed cuffs and hem help hold the jacket in place while you move
- Zippered front pockets
- Full-zip design
- Embroidered Swoosh logo
- Machine wash

 Sustainable materials



# Carryover Dri-Fit Academy 23 Woven Track Jacket (Youth)

## Lifecycle

January 2023 - December 2024

## Available in

XS - S - M - L - XL



DR1719-010  
Black / White /  
(White)



DR1719-012  
Wolf Grey /  
Black / (White)



DR1719-100  
White / Black /  
(Black)



DR1719-329  
Green Spark /  
Lucky Green /  
(White)



DR1719-451  
Obsidian / Royal  
Blue / (White)



DR1719-463  
Royal Blue /  
Obsidian /  
(White)



DR1719-657  
University Red /  
Gym Red /  
(White)



DR1719-719  
Tour Yellow /  
University Gold /  
(Black)

## Product Features

- Body/panels/pocket bags: 100% Polyester Rib: 97% Polyester/3% Spandex
- Nike Dri-FIT technology moves sweat away from your skin for quicker evaporation, helping you stay dry and comfortable
- Sweat-wicking fabric combined with mesh insets to help keep you dry and comfortable during your pre-match or training routine
- Mesh lining and exterior panels at sleeves and sides add breathability
- Elastic cuffs help hold the sleeves in place while you move
- Front pockets
- Full-zip design
- Embroidered Swoosh logo
- Machine wash

 Sustainable materials



New

# Dri-Fit Strike 24 Knit Track Jacket

## Lifecycle

January 2024 - December 2025

Futures only

## Available in

XS - S - M - L - XL - 2XL - 3XL



FD7579-010  
Black / Black /  
Black / (White)



FD7579-455  
Obsidian /  
Obsidian /  
Obsidian /  
(White)



FD7579-468  
Royal Blue /  
Royal Blue /  
Royal Blue /  
(White)




FD7579-657  
University Red /  
University Red /  
University Red /  
(White)

## Product Features

- 100% polyester
- Nike Dri-FIT technology moves sweat away from your skin for quicker evaporation, helping you stay dry and comfortable
- Standard fit for classic feel and comfort
- Zippered pockets for secure storage



 Sustainable materials



New

# Dri-Fit Women's Strike 24 Knit Track Jacket

## Lifecycle

January 2024 - December 2025

Futures only

## Available in

XS - S - M - L - XL - 2XL




FD7583-010  
Black / Black /  
Black / (White)



FD7583-455  
Obsidian /  
Obsidian /  
Obsidian /  
(White)

## Product Features

- 100% polyester
- Nike Dri-FIT technology moves sweat away from your skin for quicker evaporation, helping you stay dry and comfortable
- Standard fit for classic feel and comfort
- Zippered pockets for secure storage

 Sustainable materials



New

# Dri-Fit Academy Pro 24 Knit Track Jacket

## Lifecycle

January 2024 - December 2025

Futures only

## Available in

XS - S - M - L - XL - 2XL - 3XL



FD7681-010  
Black / Black /  
Black / (White)



FD7681-329  
Green Spark /  
Green Spark /  
Green Spark /  
(White)



FD7681-455  
Obsidian /  
Obsidian /  
Obsidian /  
(White)



FD7681-468  
Royal Blue /  
Royal Blue /  
Royal Blue /  
(White)



FD7681-657  
University Red /  
University Red /  
University Red /  
(White)

## Product Features

- 100% polyester
- Nike Dri-FIT technology moves sweat away from your skin for quicker evaporation, helping you stay dry and comfortable
- Slim fit for a tailored look and feel
- Zippered pockets for secure storage

 Sustainable materials



New

# Dri-Fit Women's Academy Pro 24 Knit Track Jacket

## Lifecycle

January 2024 - December 2025

Futures only

## Available in

XS - S - M - L - XL - 2XL



FD7683-010  
Black / Black /  
Black / (White)



FD7683-455  
Obsidian /  
Obsidian /  
Obsidian /  
(White)



FD7683-468  
Royal Blue /  
Royal Blue /  
Royal Blue /  
(White)



FD7683-657  
University Red /  
University Red /  
University Red /  
(White)

## Product Features

- 100% polyester
- Nike Dri-FIT technology moves sweat away from your skin for quicker evaporation, helping you stay dry and comfortable
- Loose fit for an oversized, roomy feel
- Zippered pockets for secure storage

 Sustainable materials



New

# Dri-Fit Academy Pro 24 Knit Track Jacket (Kids)

## Lifecycle

January 2024 - December 2025

Futures only

## Available in

XS - S - M - L - XL



FD7685-010  
Black / Black /  
Black / (White)



FD7685-329  
Green Spark /  
Green Spark /  
Green Spark /  
(White)



FD7685-455  
Obsidian /  
Obsidian /  
Obsidian /  
(White)




FD7685-468  
Royal Blue /  
Royal Blue /  
Royal Blue /  
(White)

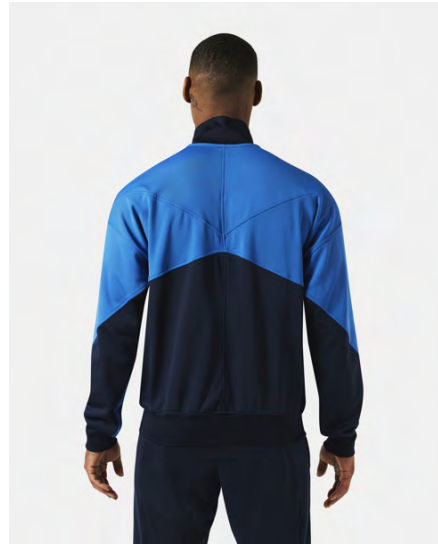


FD7685-657  
University Red /  
University Red /  
University Red /  
(White)

## Product Features

- 100% polyester
- Nike Dri-FIT technology moves sweat away from your skin for quicker evaporation, helping you stay dry and comfortable
- Standard fit for classic feel and comfort
- Zippered pockets for secure storage

 Sustainable materials



New

# Dri-Fit Anthem Knit Jacket 24

## Lifecycle

January 2024 - March 2024

Futures only

## Available in

XS - S - M - L - XL - 2XL - 3XL



FD7727-010  
Black /  
Anthracite /  
Black / (White)



FD7727-012  
Wolf Grey /  
Black / Wolf  
Grey / (White)



FD7727-457  
Obsidian / Royal  
Blue / Obsidian /  
(White)

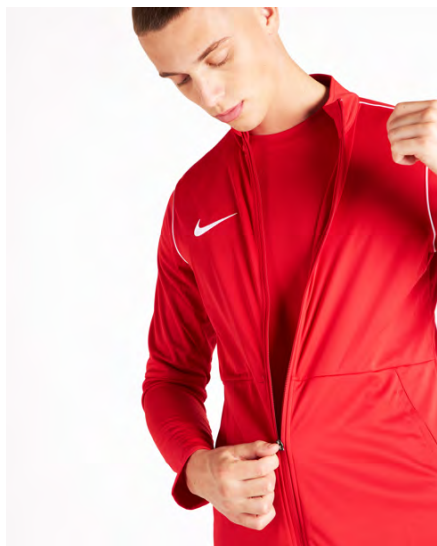


FD7727-657  
University Red /  
Bright Crimson /  
University Red /  
(White)

## Product Features

- 100% polyester
- Dri-FIT technology helps you stay dry, comfortable & focused

 Sustainable materials



New

# Dri-Fit Park 20 Knit Track Jacket

## Lifecycle

January 2020 - December 2025

## Available in

S - M - L - XL - 2XL



FJ3022-010  
Black / White /  
(White)



FJ3022-100  
White / Black /  
(Black)



FJ3022-302  
Pine Green /  
White / (White)



FJ3022-451  
Obsidian / White  
/ (White)



FJ3022-463  
Royal Blue /  
White / (White)




FJ3022-657  
University Red /  
White / (White)



FJ3022-719  
Tour Yellow /  
Black / (Black)

## Product Features

- 100% Polyester
- Dri-FIT technology helps you stay dry and comfortable
- Knit fabric feels soft and comfortable
- Standard fit for a relaxed, easy feel
- Side pockets with mesh lining help keep your belongings safe and dry

 Sustainable materials



New

# Dri-Fit Women's Park 20 Knit Track Jacket

## Lifecycle

January 2020 - December 2025

## Available in

XS - S - M - L - XL



FJ3024-010  
Black / White /  
(White)



FJ3024-100  
White / Black /  
(Black)



FJ3024-451  
Obsidian / White  
/ (White)




FJ3024-463  
Royal Blue /  
White / (White)



FJ3024-657  
University Red /  
White / (White)

## Product Features

- 100% Polyester
- Dri-FIT technology helps you stay dry and comfortable
- Knit fabric feels soft and comfortable
- Standard fit for a relaxed, easy feel
- Side pockets with mesh lining help keep your belongings safe and dry

 Sustainable materials



New

# Dri-Fit Park 20 Knit Track Jacket (Kids)

## Lifecycle

January 2020 - December 2025

## Available in

XS - S - M - L - XL



FJ3026-010  
Black / White /  
(White)



FJ3026-100  
White / Black /  
(Black)



FJ3026-302  
Pine Green /  
White / (White)



FJ3026-451  
Obsidian / White  
/ (White)



FJ3026-463  
Royal Blue /  
White / (White)



FJ3026-657  
University Red /  
White / (White)



FJ3026-719  
Tour Yellow /  
Black / (Black)

## Product Features

- 100% Polyester
- Dri-FIT technology helps you stay dry and comfortable
- Knit fabric feels soft and comfortable
- Standard fit for a relaxed, easy feel
- Side pockets with mesh lining help keep your belongings safe and dry



 Sustainable materials



Carryover

## Therma-Fit Park 20 Fall Jacket

### Lifecycle

January 2021 - December 2025

### Available in

S - M - L - XL - 2XL - 3XL



CW6157-010  
Black / (White)



CW6157-451  
Obsidian /  
(White)

### Product Features

- 100% Polyester
- Water-repellent fabric helps keep you dry when the elements turn
- Elongated zipper hits above your chin for extra coverage
- Elastic cuffs and hem help keep the jacket in place as you move
- Snap pockets let you secure your essentials
- Standard fit for a relaxed, easy feel
- Full zipper

 Sustainable materials



## Carryover Park 20 Rain Jacket

### Lifecycle

January 2020 - December 2025

### Available in

S - M - L - XL - 2XL



BV6881-010  
Black / White /  
(White)



BV6881-302  
Pine Green /  
White / (White)



BV6881-410  
Obsidian / White  
/ (White)



BV6881-463  
Royal Blue /  
White / (White)



BV6881-657  
University Red /  
White / (White)



BV6881-719  
Tour Yellow /  
Black / (Black)

### Product Features

- This product is made with at least 75% recycled polyester fibers
- Dri-FIT technology and water-repellant fabric help you stay dry in light rain
- Side pockets with mesh lining help keep belongings safe and dry
- Shoulder piping inspires a classic football look

 Sustainable materials



Carryover

## Therma-Fit Park 20 Fall Jacket (Youth)

### Lifecycle

January 2021 - December 2025

### Available in

XS - S - M - L - XL




CW6159-010  
Black / (White)



CW6159-451  
Obsidian /  
(White)

### Product Features

- 100% Polyester
- Water-repellent fabric helps keep you dry when the elements turn
- Elongated zipper hits above your chin for extra coverage
- Elastic cuffs and hem help keep the jacket in place as you move
- Snap pockets let you secure your essentials
- Loose fit for a roomy feel
- Full zipper

 Sustainable materials



Carryover

## Park 20 Winter Jacket

### Lifecycle

July 2022 - December 2025

### Available in

S - M - L - XL - 2XL - 3XL




CW6156-010  
Black / (White)



CW6156-451  
Obsidian /  
(White)

### Product Features

- 100% Polyester
- Water-repellent finish helps keep you dry when it starts to rain
- Synthetic fill provides lightweight warmth
- Elongated, full-zip design covers you from the elements
- Loose fit for a roomy feel
- Snap-button pockets

 Sustainable materials



Carryover

## Storm-Fit Park 20 Winter Jacket (Youth)

### Lifecycle

January 2021 - December 2025

### Available in

XS - S - M - L - XL




CW6158-010  
Black / (White)

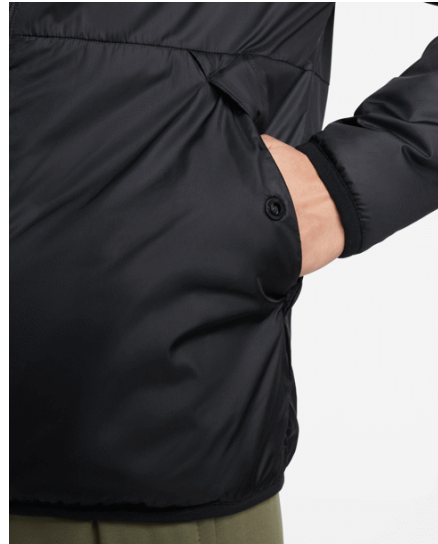


CW6158-451  
Obsidian /  
(White)

### Product Features

- 100% Polyester
- Water-repellent finish helps keep you dry when it starts to rain
- Synthetic fill provides lightweight warmth
- Elongated, full-zip design covers you from the elements
- Loose fit for a roomy feel
- Snap-button pockets

 Sustainable materials



Carryover  
**Therma-Fit Women's Park 20  
 Fall Jacket**

**Lifecycle**

January 2021 - December 2025

**Available in**

XS - S - M - L - XL



DC8039-010  
 Black / (White)



DC8039-451  
 Obsidian /  
 (White)

**Product Features**

- 100% Polyester
- Thermal fabric helps keep you warm
- Water-repellent treatment helps keep you dry in light rain
- Elastic cuffs and hem hold the jacket in place as you move
- Snap pockets secure your everyday essentials
- Standard fit for a relaxed, easy feel

 Sustainable materials



Carryover

## Storm-Fit Women's Park 20 Winter Jacket

### Lifecycle

January 2021 - December 2025

### Available in

XS - S - M - L - XL



DC8036-010  
Black / (White)



DC8036-451  
Obsidian /  
(White)

### Product Features

- 100% Polyester
- Water-repellent finish helps you stay dry in light rain
- Synthetic-fill insulation provides warmth without weighing you down
- French terry lining at the hood, pockets and collar feels soft and warm
- Loose fit and longer length cover you from the elements
- Loose fit for a roomy feel
- Full-length zipper
- Snap pockets

 Sustainable materials



Carryover

## Park 20 Rain Jacket (Youth)

### Lifecycle

January 2020 - December 2025

### Available in

XS - S - M - L - XL



BV6904-010  
Black / White /  
(White)



BV6904-302  
Pine Green /  
White / (White)



BV6904-451  
Obsidian / White  
/ (White)



BV6904-463  
Royal Blue /  
White / (White)



BV6904-657  
University Red /  
White / (White)



BV6904-719  
Tour Yellow /  
Black / (Black)

### Product Features

- This product is made with 100% recycled polyester fibers
- Dri-FIT technology and water-repellant fabric help you stay dry in light rain
- Side pockets with mesh lining help keep belongings safe and dry
- Shoulder piping inspires a classic football look



 Sustainable materials



New

# Dri-Fit Academy Pro 24 Rain Jacket

## Lifecycle

January 2024 - December 2025

Futures only

## Available in

XS - S - M - L - XL - 2XL - 3XL



FD7686-010  
Black / (White)



FD7686-451  
Obsidian /  
(White)

## Product Features

- 100% polyester
- Nike Storm-FIT technology resists elements like wind and water to help keep you comfortable in harsh weather conditions
- Standard fit for classic feel and comfort
- Zippered pockets for secure storage
- Fold over binding on the sleeve hem helps keep the water out

 Sustainable materials



New

# Storm-Fit Women's Academy Pro 24 Rain Jacket

## Lifecycle

January 2024 - December 2025

Futures only

## Available in

XS - S - M - L - XL - 2XL




FD7699-010  
Black / (White)



FD7699-451  
Obsidian /  
(White)

## Product Features

- 100% polyester
- Nike Storm-FIT technology resists elements like wind and water to help keep you comfortable in harsh weather conditions
- Standard fit for classic feel and comfort
- Zippered pockets for secure storage
- Fold over binding on the sleeve hem helps keep the water out

 Sustainable materials



New

## Dri-Fit Academy Pro 24 Rain Jacket (Kids)

### Lifecycle

January 2024 - December 2025

Futures only

### Available in

XS - S - M - L - XL



FD7701-010  
Black / (White)



FD7701-451  
Obsidian /  
(White)

### Product Features

- 100% polyester
- Nike Storm-FIT technology resists elements like wind and water to help keep you comfortable in harsh weather conditions
- Standard fit for classic feel and comfort
- Zippered pockets for secure storage
- Fold over binding on the sleeve hem helps keep the water out

 Sustainable materials



New

## Dri-Fit Academy Pro 24 Fall Jacket

### Lifecycle

January 2024 - December 2025

Futures only

### Available in

XS - S - M - L - XL - 2XL - 3XL



FD7702-010  
Black / (White)



FD7702-451  
Obsidian /  
(White)

### Product Features

- 100% polyester
- The construction of the sleeves contributes to the efficiency of our patterns, reducing material waste
- Elasticized stitching along the bottom hem keeps the jacket closer to body and keep the heat in
- Coral on the body and sleeves is a water repellent woven fabric, to keep you dry, while 200g down fill sheets within the baffles of the jacket keep you warm
- This garment is made with 98% recycled materials
- This style comes with zippered pockets for secure storage
- Inside the sleeve opening is an interior fleece lined cuff to keep athletes warm and comfortable in cold environments

 Sustainable materials



New

## Dri-Fit Women's Academy Pro 24 Fall Jacket

### Lifecycle

January 2024 - December 2025

Futures only

### Available in

XS - S - M - L - XL - 2XL




FD7704-010  
Black / (White)



FD7704-451  
Obsidian /  
(White)

### Product Features

- 100% polyester
- Nike Thermo-FIT technology helps manage your body's natural heat to help keep you warm in cold-weather conditions
- Loose fit for an oversized, roomy feel
- Sleeve opening is an interior fleece lined cuff
- Zippered pockets for secure storage

 Sustainable materials



New

## Dri-Fit Academy Pro 24 Fall Jacket (Kids)

### Lifecycle

January 2024 - December 2025

Futures only

### Available in

XS - S - M - L - XL




FD7708-010  
Black / (White)

FD7708-451  
Obsidian /  
(White)

### Product Features

- 100% polyester
- The construction of the sleeves contributes to the efficiency of our patterns, reducing material waste
- Elasticized stitching along the bottom hem keeps the jacket closer to body and keep the heat in
- Coral on the body and sleeves is a water repellent woven fabric, to keep you dry, while 200g down fill sheets within the baffles of the jacket keep you warm
- This garment is made with 98% recycled materials
- This style comes with zippered pockets for secure storage
- Inside the sleeve opening is an interior fleece lined cuff to keep athletes warm and comfortable in cold environments

 Sustainable materials



New

# Dri-Fit Academy Pro 24 Winter Jacket

## Lifecycle

January 2024 - December 2025

Futures only

## Available in

XS - S - M - L - XL - 2XL - 3XL



FD7709-010  
Black / (White)



FD7709-451  
Obsidian / (White)

## Product Features

- 100% polyester
- Nike Dri-FIT technology moves sweat from your skin for quicker
- evaporation—helping you stay dry and comfortable

 Sustainable materials



New

## Dri-Fit Women's Academy Pro 24 Winter Jacket

### Lifecycle

January 2024 - December 2025

Futures only

### Available in

XS - S - M - L - XL - 2XL



FD7712-010  
Black / (White)




FD7712-451  
Obsidian /  
(White)

### Product Features

- 100% polyester
- Nike Therma-FIT technology helps manage your body's natural heat to help keep you warm in cold-weather conditions
- Loose fit for an oversized, roomy feel
- A two-way zipper along the front helps to increase range of motion
- Sleeve opening is an interior fleece lined cuff
- Zippered pockets for secure storage



 Sustainable materials



New

# Dri-Fit Academy Pro 24 Winter Jacket (Kids)

## Lifecycle

January 2024 - December 2025

Futures only

## Available in

XS - S - M - L - XL



FD7714-010  
Black / (White)



FD7714-451  
Obsidian /  
(White)

## Product Features

- 100% polyester
- Nike Dri-FIT technology moves sweat from your skin for quicker
- evaporation—helping you stay dry and comfortable

Carryover

# Women's Park 20 Rain Jacket



### Lifecycle

July 2022 - December 2025

### Available in

XS - S - M - L - XL



BV6895-010  
Black / White /  
White



BV6895-410  
Obsidian / White  
/ (White)




BV6895-463  
Royal Blue /  
White / (White)



BV6895-657  
University Red /  
White / (White)

### Product Features

- This product is made with at least 75% recycled polyester fibers
- Dri-FIT technology and water-repellant fabric help you stay dry in light rain
- Side pockets with mesh lining help keep belongings safe and dry
- Shoulder piping inspires a classic football look
- Standard fit for a relaxed, easy feel
- Machine wash

 Sustainable materials



# Carryover Dri-Fit Academy Pro Training Kit (Little Kids)

## Lifecycle

January 2022 - December 2025

**Futures only**

## Available in

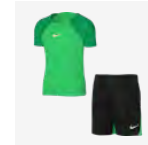
XS - S - M - L - XL



DH9484-010  
Black / Volt /  
(White)



DH9484-013  
Black /  
Anthracite /  
(White)



DH9484-329  
Green Spark /  
Lucky Green /  
(White)



DH9484-451  
Obsidian / Royal  
Blue / (White)

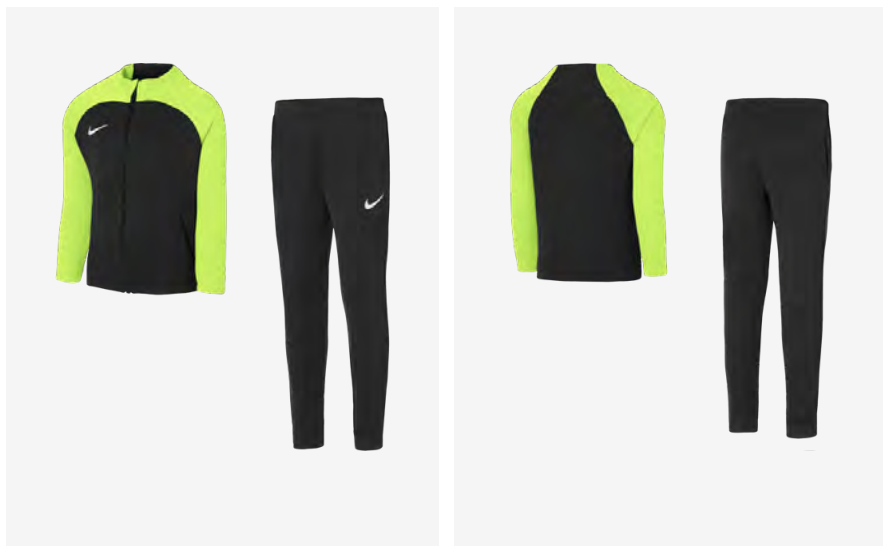


DH9484-463  
Royal Blue /  
Obsidian /  
(White)

## Product Features

- This product is made with 100% recycled polyester fibers
- A relaxed, easy fit works together with moisture-wicking fabric to help keep sweat off your skin when your training heats up
- Nike Dri-FIT technology moves sweat away from your skin for quicker evaporation, helping you stay dry and comfortable
- Side pockets let you store small items
- Elastic drawcord provides a personalized fit
- Machine wash

 Sustainable materials



# Carryover Dri-Fit Academy Pro Track Suit (Little Kids)

## Lifecycle

January 2022 - December 2025

**Futures only**

## Available in

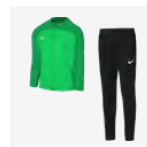
XS - S - M - L - XL



DJ3363-010  
Black / Black /  
Volt / (White)



DJ3363-013  
Black / Black /  
Anthracite /  
(White)



DJ3363-329  
Green Spark /  
Black / Lucky  
Green / (White)



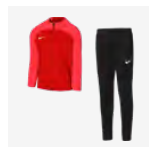
DJ3363-451  
Obsidian / Royal  
Blue / (White)



DJ3363-463  
Royal Blue /  
Obsidian /  
Obsidian /  
(White)



DJ3363-635  
Bright Crimson /  
Black /  
University Red /  
(White)



DJ3363-657  
University Red /  
Black / Bright  
Crimson /  
(White)

## Product Features

- 100% polyester
- A relaxed, easy fit works together with moisture-wicking fabric to help keep sweat off your skin when your training heats up
- Dri-FIT technology moves sweat from your skin for quicker evaporation—helping you stay dry and comfortable
- Zippered pockets let you secure your essentials
- Standard fit for a relaxed, easy feel
- Machine wash

# LIFE STYLE



TOPS & T-SHIRTS	182
PANTS & SHORTS	189
POLOS	197
HOODIES & SWEATSHIRTS	200



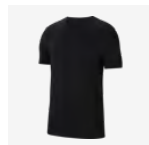
## Carryover Park 20 Tee

### Lifecycle

January 2021 - December 2025

### Available in

S - M - L - XL - 2XL - 3XL



CZ0881-010  
Black / (White)



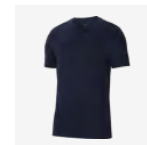
CZ0881-071  
Charcoal  
Heather / (White)



CZ0881-100  
White / (Black)



CZ0881-302  
Pine Green /  
(White)



CZ0881-451  
Obsidian /  
(White)



CZ0881-463  
Royal Blue /  
(White)



CZ0881-657  
University Red /  
(White)



CZ0881-719  
Tour Yellow /  
(Black)

### Product Features

- 100% Cotton
- Standard fit for a relaxed, easy feel
- Ribbed collar

Carryover  
**Park 20 Tee (Youth)**

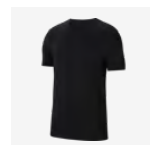


**Lifecycle**

January 2021 - December 2025

**Available in**

XS - S - M - L - XL



CZ0909-010  
 Black / (White)



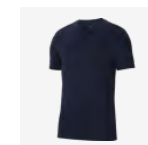
CZ0909-071  
 Charcoal  
 Heather / (White)



CZ0909-100  
 White / (Black)



CZ0909-302  
 Pine Green /  
 (White)



CZ0909-451  
 Obsidian /  
 (White)



CZ0909-463  
 Royal Blue /  
 (White)



CZ0909-657  
 University Red /  
 (White)



CZ0909-719  
 Tour Yellow /  
 (Black)

**Product Features**

- 100% Cotton
- Standard fit for a relaxed, easy feel
- Ribbed collar



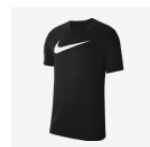
## Carryover Dri-Fit Park 20 Tee

### Lifecycle

January 2021 - December 2025

### Available in

S - M - L - XL - 2XL - 3XL



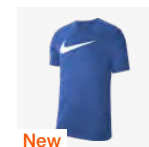
CW6936-010  
Black / (White)



CW6936-100  
White / (Black)



CW6936-451  
Obsidian /  
(White)



**New**  
CW6936-463  
Royal Blue /  
(White)

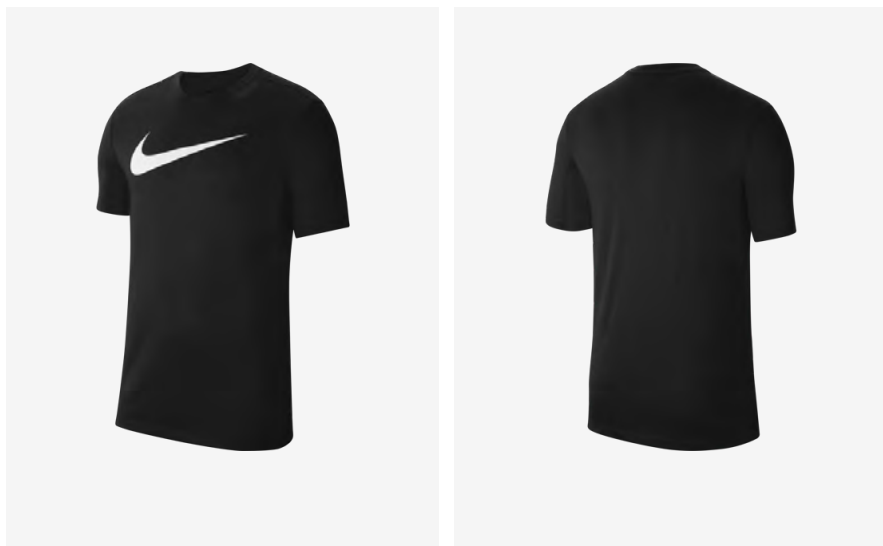


CW6936-657  
University Red /  
(White)

### Product Features

- 75% Polyester/13% Cotton/12% Rayon
- The Nike Dri-FIT Park T-Shirt is made of soft, sweat-wicking fabric to help keep you comfortable during training or competition
- Nike Dri-FIT technology helps you stay dry and comfortable
- Lightweight fabric feels soft and slightly stretchy
- Standard fit for a relaxed, easy feel





Carryover

## Dri-Fit Park 20 Tee (Youth)

### Lifecycle

January 2021 - December 2025

### Available in

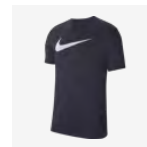
XS - S - M - L - XL



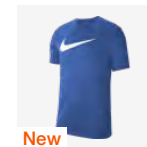
CW6941-010  
Black / (White)



CW6941-100  
White / (Black)



CW6941-451  
Obsidian /  
(White)



**New**  
CW6941-463  
Royal Blue /  
(White)



CW6941-657  
University Red /  
(White)

### Product Features

- 57% Cotton/43% Polyester
- The Nike Dri-FIT Park T-Shirt is made of soft, sweat-wicking fabric to help keep you comfortable during training or competition
- Nike Dri-FIT technology helps you stay dry and comfortable
- Lightweight fabric feels soft and slightly stretchy
- Standard fit for a relaxed, easy feel
- Ribbed collar

Carryover  
**Dri-Fit Park 20 Tee**

**Lifecycle**

January 2021 - December 2025

**Available in**

S - M - L - XL - 2XL - 3XL



CW6952-010  
 Black / (White)



CW6952-071  
 Charcoal  
 Heather / (White)



CW6952-100  
 White / (Black)



**Product Features**

- 57% Cotton/43% Polyester
- The Nike Dri-FIT Park T-Shirt is made of soft, sweat-wicking fabric to help keep you comfortable during training or competition
- Nike Dri-FIT technology helps you stay dry and comfortable
- Lightweight fabric feels soft and slightly stretchy
- Standard fit for a relaxed, easy feel
- Ribbed collar

Carryover

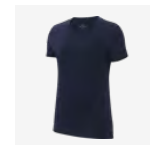
## Women's Park 20 Tee

**Lifecycle**

January 2021 - December 2025

**Available in**

XS - S - M - L - XL

CZ0903-010  
Black / (White)CZ0903-071  
Charcoal  
Heather / (White)CZ0903-100  
White / (Black)CZ0903-302  
Pine Green /  
(White)CZ0903-451  
Obsidian /  
(White)CZ0903-463  
Royal Blue /  
(White)CZ0903-657  
University Red /  
(White)CZ0903-719  
Tour Yellow /  
(Black)**Product Features**

- 100% Cotton
- Standard fit for a relaxed, easy feel
- Ribbed collar



## Carryover Dri-Fit Women's Park 20 Tee

### Lifecycle

January 2021 - December 2025

### Available in

XS - S - M - L - XL



CW6967-010  
Black / (White)



CW6967-100  
White / (Black)



CW6967-451  
Obsidian /  
(White)



CW6967-657  
University Red /  
(White)

### Product Features

- 75% Polyester/13% Cotton/12% Rayon
- Dri-FIT technology helps you stay dry and comfortable
- Lightweight fabric feels soft and slightly stretchy
- Standard fit for a relaxed, easy feel



Carryover  
**Park 20 Short**

**Lifecycle**

January 2021 - December 2025

**Available in**

S - M - L - XL - 2XL



CW6910-010  
 Black / White /  
 (White)



CW6910-063  
 Dark Grey  
 Heather / Black /  
 (Black)



CW6910-071  
 Charcoal  
 Heather / White /  
 (White)



CW6910-451  
 Obsidian / White  
 / (White)

**Product Features**

- Body: 82% Cotton/18% Polyester. Pocket bags: 100% Polyester
- Fleece fabric feels soft and warm
- Drawcord waistband lets you adjust the fit
- Zippered pockets secure your everyday essentials
- Loose fit for a roomy feel



Carryover  
**Park 20 Short (Youth)**

**Lifecycle**

January 2021 - December 2025

**Available in**

XS - S - M - L - XL



CW6932-010  
 Black / White /  
 (White)



CW6932-063  
 Dark Grey  
 Heather / Black /  
 (Black)



CW6932-071  
 Charcoal  
 Heather / White /  
 (White)



CW6932-451  
 Obsidian / White  
 / (White)

**Product Features**

- Body: 82% Cotton/18% Polyester. Pocket bags: 100% Polyester
- Fleece fabric feels soft and warm
- Drawcord waistband lets you adjust the fit
- Zippered pockets secure your everyday essentials
- Standard fit for a relaxed, easy feel

## Carryover Park 20 Pant

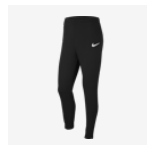


### Lifecycle

January 2021 - December 2025

### Available in

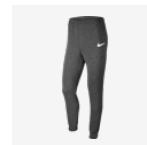
S - M - L - XL - 2XL



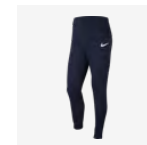
CW6907-010  
Black / White /  
(White)



CW6907-063  
Dark Grey  
Heather / Black /  
(Black)



CW6907-071  
Charcoal  
Heather / White /  
(White)



CW6907-451  
Obsidian / White  
/ (White)

### Product Features

- Body: 82% Cotton/18% Polyester. Pocket bags: 100% Polyester
- Standard fit for a relaxed, easy feel
- Elastic waistband
- Zippered pockets
- Cuffed ankles



Carryover

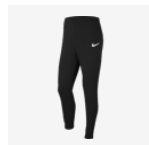
## Park 20 Pant (Youth)

### Lifecycle

January 2021 - December 2025

### Available in

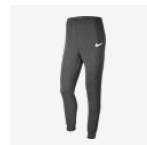
XS - S - M - L - XL



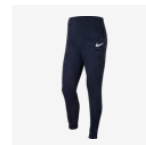
CW6909-010  
Black / White /  
(White)



CW6909-063  
Dark Grey  
Heather / Black /  
(Black)



CW6909-071  
Charcoal  
Heather / White /  
(White)



CW6909-451  
Obsidian / White  
/ (White)

### Product Features

- Body: 82% Cotton/18% Polyester. Pocket bags: 100% Polyester
- Fleece fabric feels soft and warm
- Drawcord waistband lets you adjust the fit
- Zippered pockets secure your everyday essentials
- Standard fit for a relaxed, easy feel





Carryover

## Women's Park 20 Short

### Lifecycle

January 2021 - December 2025

### Available in

XS - S - M - L - XL



CW6963-010  
Black / White /  
(White)



CW6963-063  
Dark Grey  
Heather / Black /  
(Black)



CW6963-071  
Charcoal  
Heather / White /  
(White)



CW6963-451  
Obsidian / White  
/ (White)

### Product Features

- Body: 82% Cotton/18% Polyester. Pocket bags: 100% Polyester
- Fleece fabric feels soft and warm
- Drawcord waistband lets you adjust the fit
- Zippered pockets secure your everyday essentials
- Loose fit for a roomy feel

Carryover

## Women's Park 20 Pant

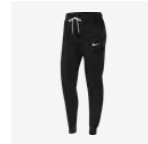


### Lifecycle

January 2021 - December 2025

### Available in

XS - S - M - L - XL



CW6961-010  
Black / White /  
(White)



CW6961-063  
Dark Grey  
Heather / Black /  
(Black)



CW6961-071  
Charcoal  
Heather / White /  
(White)



CW6961-451  
Obsidian / White  
/ (White)

### Product Features

- Body: 80% Cotton/20% Polyester. Pocket bags: 100% Cotton
- Fleece fabric feels soft and warm
- Drawcord waistband lets you adjust the fit
- Zippered pockets secure your everyday essentials
- Standard fit for a relaxed, easy feel



Carryover

## Strike 22 Express Sock pant

### Lifecycle

January 2022 - March 2024

Futures only

### Available in

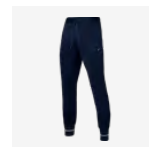
S - M - L - XL - 2XL



DH9386-010  
Black / (White)



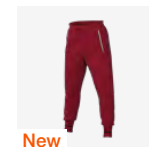
DH9386-070  
Dark Smoke  
Grey / (White)



DH9386-451  
Obsidian /  
(White)



DH9386-657  
University Red /  
(Black)

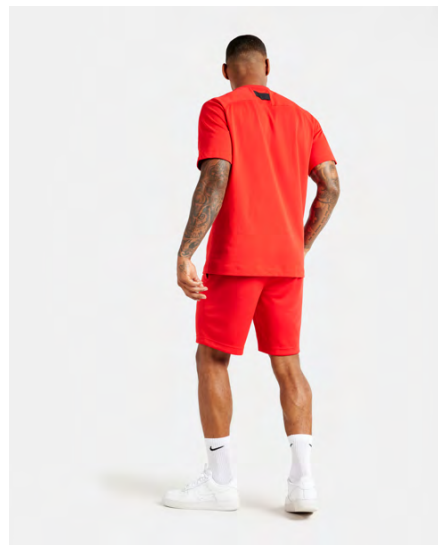


**New**  
DH9386-687  
Gym Red /  
(Black)

### Product Features

- 55% cotton/45% polyester
- A relaxed fit paired with sweat-wicking fabric helps keep you cool and composed while fine-tuning your skills
- Dri-FIT technology moves sweat from your skin for quicker evaporation—helping you stay dry and comfortable
- Zippered pockets let you store your essentials
- Sock cuffs at the ankles ensure that nothing comes between you and the ball
- Standard fit for a relaxed, easy feel
- Machine wash

 Sustainable materials



## Carryover Strike 22 Express Short

### Lifecycle

January 2022 - March 2024

Futures only

### Available in

S - M - L - XL - 2XL



DH9363-010  
Black / (White)



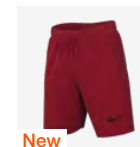
DH9363-070  
Dark Smoke  
Grey / (White)



DH9363-451  
Obsidian /  
(White)



DH9363-657  
University Red /  
(Black)



New

DH9363-687  
Gym Red /  
(Black)

### Product Features

- 100% polyester
- Design details specifically tailored for soccer's rising stars
- A relaxed fit paired with sweat-wicking fabric helps keep you cool and composed while fine-tuning your skills
- Nike Dri-FIT technology moves sweat away from your skin for quicker evaporation, helping you stay dry and comfortable
- Elastic waistband stretches for a custom fit. Mesh construction adds lightweight breathability
- Zippered side pockets let you store your essentials
- Standard fit for a relaxed, easy feel
- Machine wash

Carryover

## Dri-Fit Women's Park 20 Polo

**Lifecycle**

April 2021 - December 2025

**Available in**

XS - S - M - L - XL



CW6965-010  
Black / White /  
White



CW6965-071  
Charcoal  
Heather / White /  
White



CW6965-100  
White / Black /  
Black



CW6965-451  
Obsidian / White  
/ White



CW6965-463  
Royal Blue /  
White / White



CW6965-657  
University Red /  
White / White

**Product Features**

- 75% Polyester/13% Cotton/12% Rayon
- Nike Dri-FIT technology helps keep you dry and comfortable
- Lightweight fabric feels soft and smooth
- Standard fit for a relaxed, easy feel
- 2-button placket

Carryover  
**Dri-Fit Park 20 Polo**



**Lifecycle**

April 2021 - December 2025

**Available in**

S - M - L - XL - 2XL - 3XL



CW6933-010  
 Black / White /  
 White



CW6933-071  
 Charcoal  
 Heather / White /  
 White



CW6933-100  
 White / Black /  
 Black



CW6933-451  
 Obsidian / White  
 / White



CW6933-463  
 Royal Blue /  
 White / White



CW6933-657  
 University Red /  
 White / White

**Product Features**

- 75% Polyester/13% Cotton/12% Rayon
- Nike Dri-FIT technology helps keep you dry and comfortable
- Lightweight fabric feels soft and smooth
- Standard fit for a relaxed, easy feel
- 2-button placket

Carryover  
**Dri-Fit Park 20 Polo (Youth)**



**Lifecycle**

April 2021 - December 2025

**Available in**

XS - S - M - L - XL



CW6935-010  
 Black / White /  
 White



CW6935-071  
 Charcoal  
 Heather / Htr /  
 White / White



CW6935-451  
 Obsidian / White  
 / White



CW6935-463  
 Royal Blue /  
 White / White



CW6935-657  
 University Red /  
 White / White

**Product Features**

- 75% Polyester/13% Cotton/12% Rayon
- Nike Dri-FIT technology helps keep you dry and comfortable
- Lightweight fabric feels soft and smooth
- Standard fit for a relaxed, easy feel
- 2-button placket

Carryover

## Dri-Fit Park 20 Crewneck

**Lifecycle**

January 2021 - December 2025

**Available in**

S - M - L - XL - 2XL - 3XL



CW6902-010  
Black / (White)



CW6902-063  
Dark Grey  
Heather / (Black)



CW6902-071  
Charcoal  
Heather / (White)



CW6902-451  
Obsidian /  
(White)

**Product Features**

- 82% Cotton/18% Polyester
- Fleece fabric feels soft and warm
- Ribbed cuffs and hem help keep the top in place as you move
- Standard fit for a relaxed, easy feel



Carryover  
**Dri-Fit Park 20 Crewneck  
(Youth)**

**Lifecycle**

January 2021 - December 2025

**Available in**

XS - S - M - L - XL



CW6904-010  
Black / (White)



CW6904-071  
Charcoal  
Heather / (White)



CW6904-451  
Obsidian /  
(White)

**Product Features**

- 82% Cotton/18% Polyester
- Fleece fabric feels soft and warm
- Ribbed cuffs and hem help keep the top in place as you move
- Standard fit for a relaxed, easy feel

## Carryover Park 20 Hoodie



### Lifecycle

January 2021 - December 2025

### Available in

S - M - L - XL - 2XL - 3XL



CW6894-010  
Black / White /  
(White)



CW6894-071  
Charcoal  
Heather / White /  
(White)



CW6894-101  
White / White /  
(Wolf Grey)



CW6894-302  
Pine Green /  
White / (White)



CW6894-451  
Obsidian / White  
/ (White)



CW6894-463  
Royal Blue /  
White / (White)



CW6894-657  
University Red /  
White / (White)



CW6894-719  
Tour Yellow /  
Black / (Black)

### Product Features

- Body: 82% Cotton/18% Polyester. Hood lining: 100% Cotton
- Fleece fabric feels soft and warm
- Drawcord hood lets you adjust your coverage
- Standard fit for a relaxed, easy feel
- Front pocket

## Carryover Park 20 Hoodie (Youth)



### Lifecycle

January 2021 - December 2025

### Available in

XS - S - M - L - XL



CW6896-010  
Black / (White)



CW6896-071  
Charcoal  
Heather / (White)



CW6896-101  
White / (Wolf  
Grey)



CW6896-302  
Pine Green /  
(White)



CW6896-451  
Obsidian /  
(White)



CW6896-463  
Royal Blue /  
(White)



CW6896-657  
University Red /  
(White)



CW6896-719  
Tour Yellow /  
(Black)

### Product Features

- Body: 82% Cotton/18% Polyester. Hood lining: 100% Cotton
- Fleece fabric feels soft and warm
- Ribbed cuffs and hem help hold the hoodie in place
- Standard fit for a relaxed, easy feel
- Front pocket



## Carryover Park 20 Full-Zip-Hoodie

### Lifecycle

January 2021 - December 2025

### Available in

S - M - L - XL - 2XL - 3XL



CW6887-010  
Black / White /  
(White)



CW6887-063  
Dark Grey  
Heather / Black /  
(Black)



CW6887-071  
Charcoal  
Heather / White /  
(White)



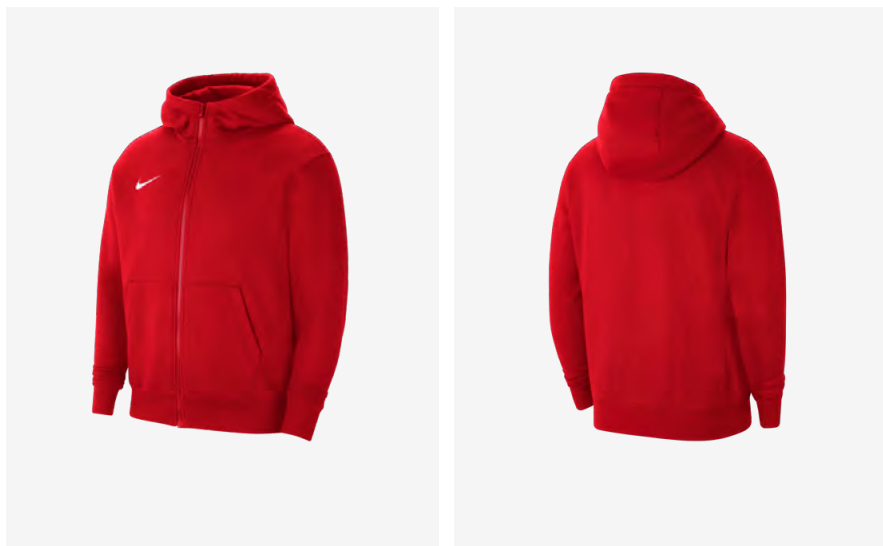
CW6887-451  
Obsidian / White  
/ (White)



CW6887-657  
University Red /  
White / (White)

### Product Features

- Body: 82% Cotton/18% Polyester. Hood lining: 100% Cotton
- Fleece fabric feels soft and warm
- Drawcord lets you wear the hood loose or cinch out the cold
- Standard fit for a relaxed, easy feel
- Full-length zipper
- Side Pockets



Carryover

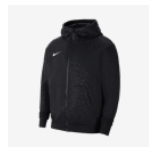
## Park 20 Full-Zip-Hoodie (Youth)

### Lifecycle

January 2021 - December 2025

### Available in

XS - S - M - L - XL



CW6891-010  
Black / (White)



CW6891-063  
Dark Grey  
Heather / (Black)



CW6891-071  
Charcoal  
Heather / (White)



CW6891-451  
Obsidian /  
(White)



CW6891-657  
University Red /  
(White)

### Product Features

- Body: 82% Cotton/18% Polyester. Hood lining: 100% Cotton
- Fleece fabric feels soft and warm
- Ribbed cuffs and hem help hold the hoodie in place
- Standard fit for a relaxed, easy feel
- Side pockets



## Carryover Women's Park 20 Hoodie

### Lifecycle

January 2021 - December 2025

### Available in

XS - S - M - L - XL



CW6957-010  
Black / White /  
(White)



CW6957-071  
Charcoal  
Heather / White /  
(White)



CW6957-101  
White / White /  
(Wolf Grey)



CW6957-302  
Pine Green /  
White / (White)



CW6957-451  
Obsidian / White  
/ (White)



CW6957-463  
Royal Blue /  
White / (White)



CW6957-657  
University Red /  
White / (White)



CW6957-719  
Tour Yellow /  
Black / (Black)

### Product Features

- Body: 80% Cotton/20% Polyester. Hood lining: 100% Cotton
- Fleece fabric feels soft and warm
- Ribbed cuffs and hem help hold the hoodie in place
- Drawcord hood lets you adjust the fit
- Standard fit for a relaxed, easy feel
- Raglan sleeves
- Front pocket

Carryover  
**Dri-Fit Women's Park 20  
 Full-Zip Hoodie**



**Lifecycle**

January 2021 - December 2025

**Available in**

XS - S - M - L - XL



CW6955-010  
 Black / White /  
 (White)



CW6955-063  
 Dark Grey  
 Heather / Black /  
 (Black)



CW6955-071  
 Charcoal  
 Heather / White /  
 (White)



CW6955-451  
 Obsidian / White  
 / (White)



CW6955-657  
 University Red /  
 White / (White)

**Product Features**

- Body: 80% Cotton/20% Polyester. Hood lining: 100% Cotton
- Fleece fabric feels soft and warm
- Large hood with drawcord lets you wear the hood loose or cinch out the cold
- Standard fit for a relaxed, easy feel
- Side pockets

Carryover

# Storm-Fit Strike 22 Express Hoodie



## Lifecycle

January 2022 - March 2024

Futures only

## Available in

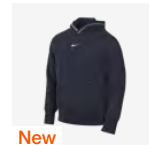
S - M - L - XL - 2XL



DH9380-010  
Black / (White)



DH9380-070  
Dark Smoke  
Grey / (White)



**New**  
DH9380-451  
Obsidian /  
(White)



DH9380-463  
Royal Blue /  
(White)



DH9380-657  
University Red /  
(Black)



**New**  
DH9380-687  
Gym Red /  
(Black)

## Product Features

- Body/hood lining: 80% cotton/20% polyester. Rib: 98% cotton/2% spandex
- A relaxed fit paired with sweat-wicking fabric helps keep you cool and composed while fine-tuning your skills
- Brushed back fleece feels soft and warm
- Front pocket and zippered back pocket let you secure your essentials
- Ribbed cuffs and hem provide a stay-put fit
- Kimono-inspired sleeves give you room to move
- Standard fit for a relaxed, easy feel
- Machine wash



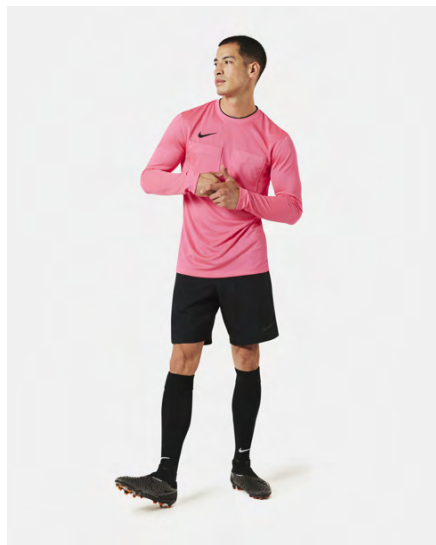
# REF EREE

JERSEYS  
SHORTS

210  
212



 Sustainable materials



## Carryover Dri-Fit Referee II Jersey L/S

### Lifecycle

April 2022 - December 2025

### Available in

XS - S - M - L - XL - 2XL



DH8027-354  
Hyper Turq /  
(Black)



DH8027-635  
Bright Crimson /  
(Black)

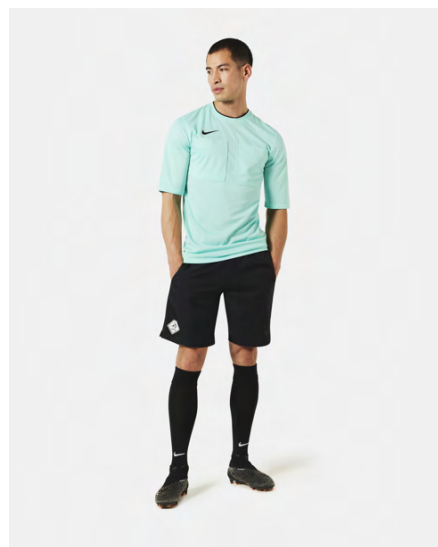
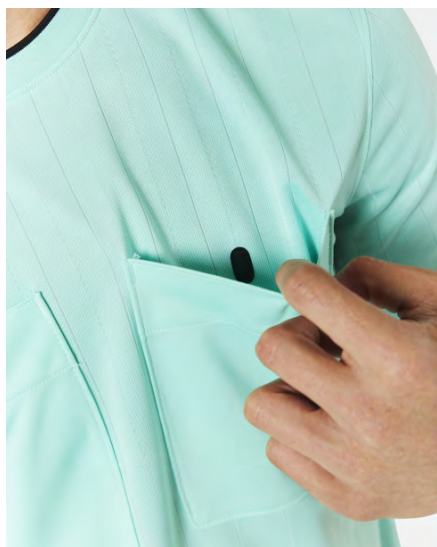
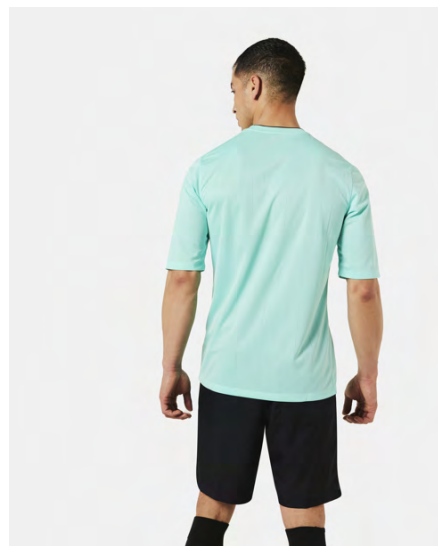
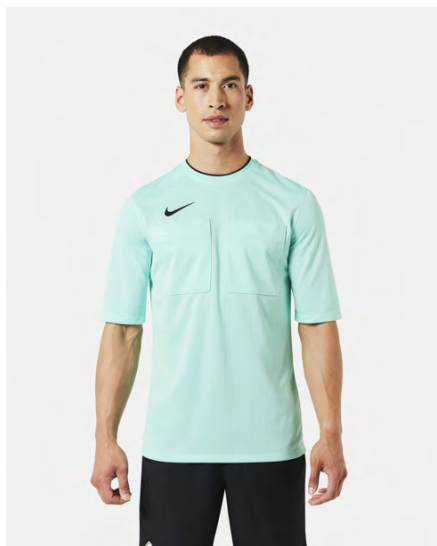


DH8027-645  
Hyper Pink /  
(Black)

### Product Features

- 100% polyester
- Nike Dri-FIT technology moves sweat away from your skin for quicker evaporation, helping you stay dry and comfortable
- Pockets with hook-and loop closures let you keep your essentials secure on the field

 Sustainable materials



## Carryover Dri-Fit Referee II Jersey S/S

### Lifecycle

April 2022 - December 2025

### Available in

XS - S - M - L - XL - 2XL



DH8024-354  
Hyper Turq /  
(Black)




DH8024-635  
Bright Crimson /  
(Black)



DH8024-645  
Hyper Pink /  
(Black)

### Product Features

- 100% polyester
- Nike Dri-FIT technology moves sweat away from your skin for quicker evaporation, helping you stay dry and comfortable
- Pockets with hook-and-loop closures let you keep your essentials secure on the field

 Sustainable materials



Carryover

## Dri-Fit Nike Dry Referee Short

### Lifecycle

June 2018 - December 2025

### Available in

XS - S - M - L - XL - 2XL



AA0737-010  
Black / Black /  
(Anthracite)

### Product Features

- This product is made with at least 50% recycled polyester fibers
- Nike Vaporknit technology combines lightweight cooling, reduced cling and precision fit
- Quick-drying, high-stretch yarn provides flexible comfort
- Precision fit conforms to your body for a streamlined feel

 Sustainable materials



Carryover

## Dri-Fit Women's Referee Shorts

### Lifecycle

April 2022 - December 2025

### Available in

XS - S - M - L - XL



DH8269-010  
Black / Black /  
(Anthracite)

### Product Features

- This product is made with at least 75% recycled polyester fibers
- Sweat-wicking fabric to help keep you cool and comfortable for the full 90 minutes
- Dri-FIT technology moves sweat from your skin for quicker evaporation—helping you stay dry and comfortable
- Side pockets and a back pocket let you store your essentials
- Adjustable drawcord delivers a personalized fit
- Slim fit for a tailored feel
- Machine wash

# EQUIP MENT



BALLS	215
BAGS	222
BACKPACKS	230



Carryover

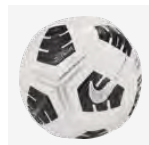
## Club Elite Team Ball

### Lifecycle

January 2021 - March 2024

### Available in

5



CU8053-100  
White / Black /  
(Metallic Silver)

### Product Features

- 40% Rubber/40% Synthetic Leather/15% Synthetic/5% Cotton
- Nike Aerowsculpt technology uses molded grooves for more consistent flight
- Textured casing gives you great touch and feel
- Rubber bladder helps maintain air pressure and shape
- 12-panel design



Carryover

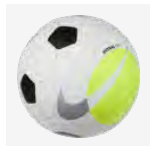
## Futsal Pro Team Ball

### Lifecycle

January 2021 - March 2024

### Available in

PRO



DH1992-100  
White / Volt /  
(Silver)

### Product Features

- 60% Rubber/15% Polyurethane/13% Polyester/12% EVA
- Textured surface gives you great touch and feel
- Hand-sewn construction means tighter seams for durability
- High-contrast graphics help you easily track the ball
- Official Futsal size and weight





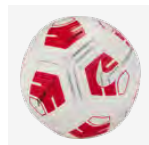
Carryover  
**Strike Team 290g Ball**

**Lifecycle**

January 2021 - March 2024

**Available in**

4 - 5



CU8062-100  
White / Bright  
Crimson / (Silver)

**Product Features**

- 60% Rubber/15% Polyurethane/13% Polyester/12% EVA
- Reduced weight makes it more suitable for young athletes
- Nike Aerowsculpt technology uses molded grooves for more consistent flight
- High-contrast graphics help you easily track the ball
- Machine-stitched casing enhances durability
- Reinforced rubber bladder for optimal air and shape retention
- 12-panel design



Carryover

## Strike Team 350g Ball

### Lifecycle

January 2021 - March 2024

### Available in

5



CU8064-100  
White / Blue /  
(Black)

### Product Features

- 60% Rubber/15% Polyurethane/13% Polyester/12% EVA
- Reduced weight makes it more suitable for young athletes
- Nike Aerowsculpt technology uses molded grooves for more consistent flight
- High-contrast graphics help you easily track the ball
- Machine-stitched casing enhances durability
- Reinforced rubber bladder for optimal air and shape retention
- 12-panel design



Carryover

## Dri-Fit Academy Team IMS Ball

### Lifecycle

January 2021 - March 2024

### Available in

3 - 4 - 5



CU8047-100  
White / Black /  
(Volt)



CU8047-101  
White / Black /  
(Total Orange)



CU8047-102  
White / Black /  
(Light Blue Fury)



CU8047-720  
Yellow / Violet /  
(Bright Crimson)

### Product Features

- 60% Rubber/15% Polyurethane/13% Polyester/12% EVA
- Nike Aerowsculpt technology uses molded grooves for more consistent flight
- Textured casing gives you great touch and feel
- Reinforced rubber bladder helps maintain air pressure and shape



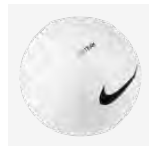
## Carryover Pitch Team Ball

### Lifecycle

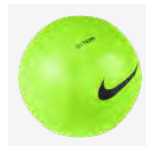
January 2021 - March 2024

### Available in

3 - 4 - 5



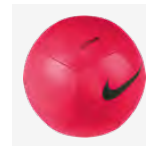
DH9796-100  
White / (Black)



DH9796-310  
Electric Green /  
(Black)



DH9796-410  
Blue Fury /  
(Black)



DH9796-635  
Bright Crimson /  
(Black)

### Product Features

- 60% Rubber/15% Polyurethane/13% Polyester/12% EVA
- Smooth, durable casing has a consistent feel
- Rubber bladder helps maintain air pressure and shape



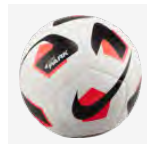
## Carryover Park Team Ball 2.0

### Lifecycle

January 2023 - March 2024

### Available in

3 - 4 - 5



DN3607-100  
White / Bright  
Crimson / (Black)



DN3607-765  
Yellow Strike /  
Sapphire /  
(Black)



DN3607-803  
Total Orange /  
White / (Thunder  
Blue)

### Product Features

- 60% rubber / 15% polyurethane / 13% polyester / 12% EVA
- 12-panel design
- Durable design helps maintain air pressure and shape
- Textured surface has a consistent touch
- Designed for easy tracking across the pitch



Carryover

## Academy Team L Hardcase

### Lifecycle

January 2021 - March 2025

### Available in

L



CU8087-010  
Black / Black /  
(White)



CU8087-410  
Midnight Navy /  
Black / (White)



CU8087-657  
University Red /  
Black / (White)

### Product Features

- 100% Polyester
- Main body compartment offers spacious storage
- Hard bottom helps keep items safe from bumps and scrapes
- Zippered wet/dry compartment at the bottom keeps things clean and organized
- Handles can attach together for an alternate carrying option
- 64L x 31W x 30H cm/ 59L

Carryover

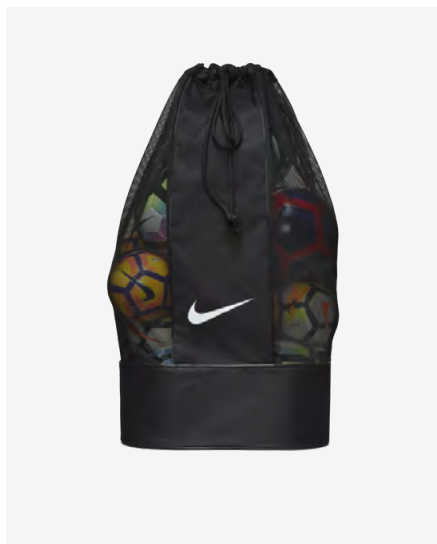
# Nike Club Team Ball Bag

**Lifecycle**

January 2019 - March 2025

**Available in**

ONE SIZE



BA5200-010  
Black / Black /  
(White)

**Product Features**

- Lining: 100% Polyester. Body: 88% Polyester/12% Nylon
- Adjustable shoulder straps are padded for comfortable carrying
- Drawcord closure lets you quickly access your gear
- Lightweight mesh promotes ventilation
- 86L x 44H x 44W cm / 160L



Carryover

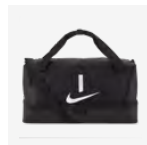
## Academy Team M Hardcase

**Lifecycle**

January 2021 - March 2025

**Available in**

M

CU8096-010  
Black / Black /  
(White)CU8096-410  
Midnight Navy /  
Black / (White)CU8096-657  
University Red /  
Black / (White)**Product Features**

- 100% Polyester
- Main body compartment offers spacious storage
- Hard bottom helps keep items safe from bumps and scrapes
- Zippered wet/dry compartment at the bottom keeps gear clean and organized
- Handles can attach together for an alternate carrying option
- 53L x 30W x 27H cm/ 37L





Carryover

## Academy Team L Duffel Bag

### Lifecycle

January 2021 - March 2025

### Available in

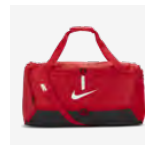
L



CU8089-010  
Black / Black /  
(White)



CU8089-410  
Midnight Navy /  
Black / (White)



CU8089-657  
University Red /  
Black / (White)

### Product Features

- 100% Polyester
- Large main compartment is spacious enough for your ball and more
- Zippered wet/dry compartment at the bottom helps keep things clean and organized
- Hand and shoulder straps let you carry your gear comfortably
- Small interior pocket and zippered exterior pockets hold small valuables
- 70L x 36W x 35H cm / 95L



Carryover

## Academy Team M Duffel Bag

### Lifecycle

January 2021 - March 2025

### Available in

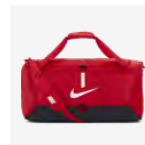
M



CU8090-010  
Black / Black /  
(White)



CU8090-410  
Midnight Navy /  
Black / (White)



CU8090-657  
University Red /  
Black / (White)

### Product Features

- 100% Polyester
- Main compartment is spacious enough for your ball and more
- Zippered wet/dry compartment at the bottom helps keep things clean and organized
- Hand and shoulder straps let you carry your gear comfortably
- Small interior pocket and zippered exterior pockets hold small valuables
- 64L x 30W x 31H cm / 60L

Carryover

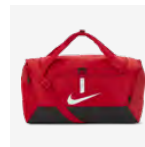
## Academy Team S Duffel Bag

**Lifecycle**

January 2021 - March 2025

**Available in**

S

CU8097-010  
Black / Black /  
(White)CU8097-410  
Midnight Navy /  
Black / (White)CU8097-657  
University Red /  
Black / (White)**Product Features**

- 100% Polyester
- Zippered main compartment offers spacious storage
- Separate wet/dry compartment helps keep things clean and organized
- Hand and shoulder straps let you carry your gear comfortably
- Small interior pocket and zippered exterior pockets hold small valuables
- 53L x 26W x 28H cm / 41L

Carryover

# Nike Club Team Roller Bag

**Lifecycle**

January 2019 - March 2025

**Available in**

ONE SIZE



BA5199-010  
Black / Black /  
(White)

**Product Features**

- 100% Polyester
- Adjustable handle and wheels for easier hauling
- Zippered main compartment provides secure storage
- Grab handle on the side gives an alternative carrying option
- 82L x 35W x 38H cm /120L





## Carryover Academy Shoe bag

### Lifecycle

January 2024 - March 2025

### Available in

ONE SIZE



New

DC2648-010  
Black / Black /  
(White)

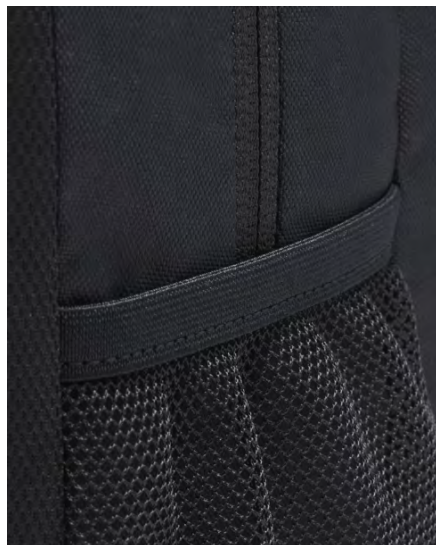
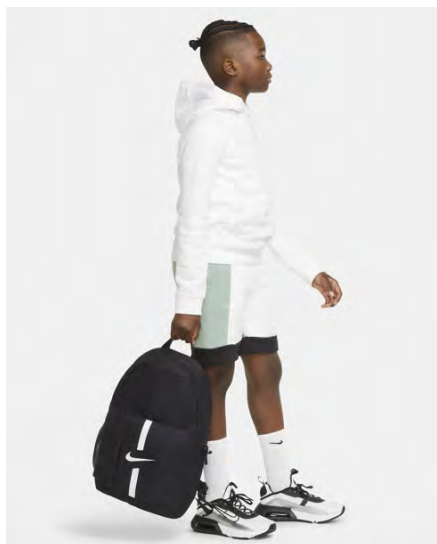
### Product Features

- Body: 100% Polyester; Lining: 100% Polyester
- 2 zippered pockets for easy access to your cleats and essentials
- Durable material stands up to everyday use
- Haul loop at the side makes for convenient carrying



Carryover

# Academy Team Backpack (Youth)



## Lifecycle

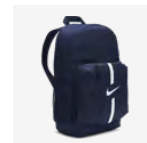
January 2021 - March 2025

## Available in

ONE SIZE



DA2571-010  
Black / Black /  
(White)



DA2571-411  
Midnight Navy /  
Black / White



DA2571-657  
University Red /  
Black / White

## Product Features

- 100% Polyester
- Wet/dry compartment helps keep things clean and organized
- Curved shoulder straps and back panel are padded for extra comfort
- Back pocket features a felt interior to safely store your phone or keys
- Mesh pocket on the side is designed to hold a water bottle
- Front pocket is large enough to fit a soccer ball
- Internal sleeve safely stores up to a 15" laptop
- 45H x 30W x 13D cm/ 22L

Carryover  
**Academy Football Gymsack**

**Lifecycle**

January 2021 - March 2025

**Available in**

ONE SIZE

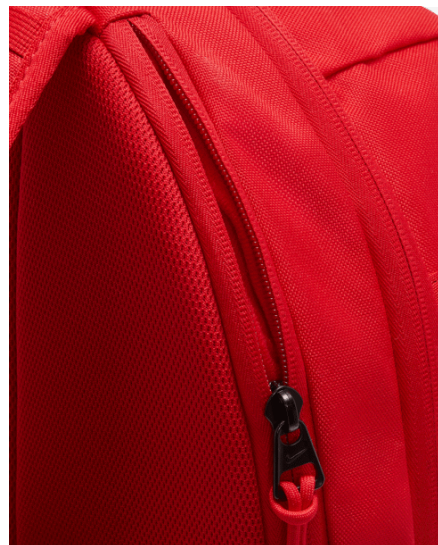


DA5435-010  
 Black / Black /  
 (White)

**Product Features**

- 100% Polyester
- Woven fabric is lightweight and durable
- Main compartment cinches closed for easy access to your gear
- Mesh at the bottom allows ventilation
- Zippered pouch on the front keeps your essentials within reach
- 50H x 36W x 6D cm / 18L





New

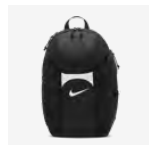
## Academy Team Backpack

### Lifecycle

January 2023 - March 2025

### Available in

ONE SIZE



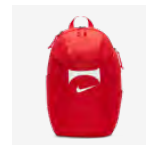
DV0761-011  
Black / Black /  
(White)



DV0761-410  
Midnight Navy /  
Midnight Navy /  
(White)



DV0761-420  
Blue Fury / Blue  
Fury / (Black)



DV0761-657  
University Red /  
University Red /  
(White)

### Product Features

- Body: 58% polyester/42% nylon. Lining: 100% polyester
- 19"H X 13"W X 7"D
- Nike Storm-FIT technology resists elements like wind and water to help keep you comfortable in harsh weather conditions
- Rain fly provides weather coverage, and features a jock tag to easily identify your bag
- A side pocket with velcro closure houses the Storm-FIT rainfly
- Enlarged tech pocket provides space for the latest technology
- Padded shoulder straps are adjustable for a comfortable fit
- Zipper pulls have been updated to make access easier in all conditions
- Mesh has been updated for enhanced ventilation
- Spot clean





[niketeamfootball.com](http://niketeamfootball.com)